

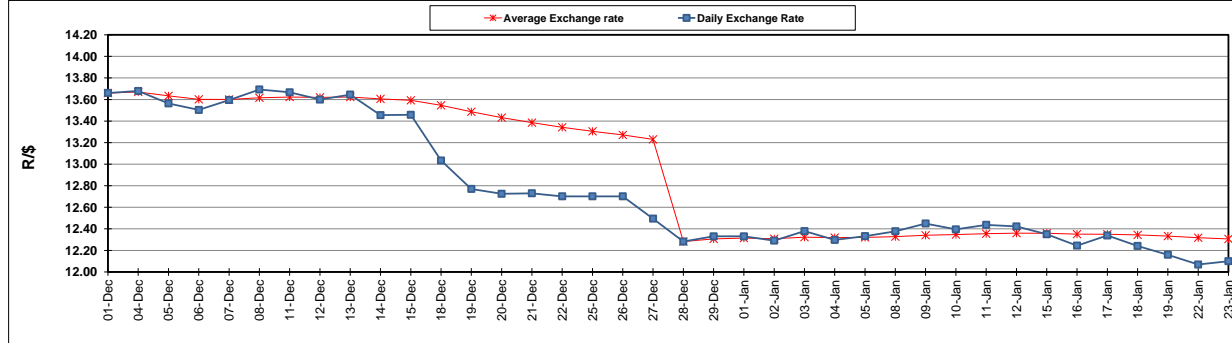
	PETROL 95 ULP	PETROL 93 ULP & LRP	DIESEL 0.05%	DIESEL 0.005%	ILL. PAR.
GAUTENG PUMP PRICE (SA c/l) AS FROM 04/01/2018	1 442.000	1 420.000	-	-	-
WHOLESALE PRICE (SA c/l) AS FROM 04/01/2018	-	-	1 273.630	1 276.030	837.388
SINGLE NATIONAL MAXIMUM RETAIL PRICE	-	-	-	-	1 082.000
BASIC FUEL PRICE - 23/01/2018 (SA c/l)	636.143	624.665	649.445	653.003	650.393
PRESS RELEASE CONTRIBUTION TO BFP 03/01/2018 - 23/01/2018 (SA c/l)	652.170	640.170	662.630	665.030	667.128
UNIT OVER/(UNDER) RECOVERY - 23/01/2018 (SA c/l)	16.027	15.505	13.185	12.027	16.735
AVERAGE BASIC FUEL PRICE 28/12/2017 - 23/01/2018	626.280	616.379	650.351	653.345	652.324
AVERAGE UNIT OVER/(UNDER) RECOVERY 28/12/2017 - 23/01/2018	33.048	29.897	16.911	17.159	20.699

### ANALYSIS MOVEMENT OF AVERAGE OVER/(UNDER) RECOVERY

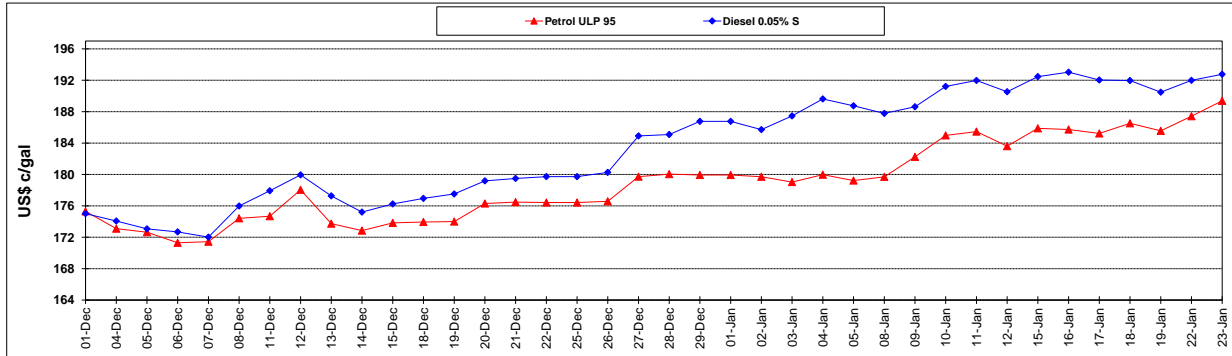
	PETROL 95	PETROL 93	DIESEL 0.05%	DIESEL 0.005%	ILL. PAR.
- MOVEMENT IN INTERNATIONAL PRODUCT PRICES	(13.959)	(16.368)	(31.903)	(31.879)	(28.263)
- MOVEMENT IN EXCHANGE RATE	47.007	46.264	48.814	49.038	48.962
AVERAGE UNIT OVER/(UNDER) RECOVERY 28/12/2017 - 23/01/2018	33.048	29.897	16.911	17.159	20.699

R/\$ EXCHANGE RATE - (R/\$ 12.0998 - 23/01/2018)

### EXCHANGE RATE USED IN BASIC FUEL PRICE



### INTERNATIONAL PRODUCT PRICES OF BASKET USED IN BASIC FUEL PRICE



### BASIC FUEL PRICE IN SA CENTS PER LITRE

