

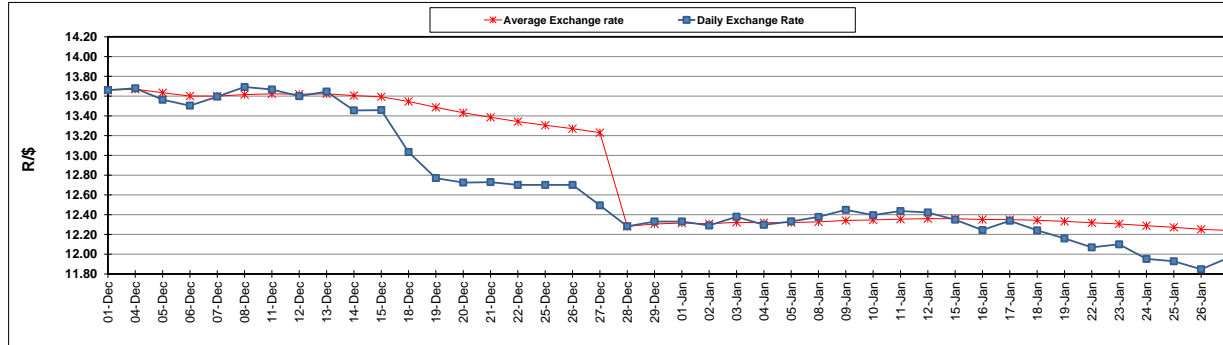
	PETROL 95 ULP	PETROL 93 ULP & LRP	DIESEL 0.05%	DIESEL 0.005%	ILL. PAR.
GAUTENG PUMP PRICE (SA c/l) AS FROM 04/01/2018	1 442.000	1 420.000	-	-	-
WHOLESALE PRICE (SA c/l) AS FROM 04/01/2018	-	-	1 273.630	1 276.030	837.388
SINGLE NATIONAL MAXIMUM RETAIL PRICE	-	-	-	-	1 082.000
BASIC FUEL PRICE - 29/01/2018 (SA c/l)	637.317	624.663	650.771	655.112	655.080
PRESS RELEASE CONTRIBUTION TO BFP 03/01/2018 - 29/01/2018 (SA c/l)	652.170	640.170	662.630	665.030	667.128
UNIT OVER/(UNDER) RECOVERY - 29/01/2018 (SA c/l)	14.853	15.507	11.859	9.918	12.048
AVERAGE BASIC FUEL PRICE 28/12/2017 - 29/01/2018	627.424	617.355	650.214	653.369	652.275
AVERAGE UNIT OVER/(UNDER) RECOVERY 28/12/2017 - 29/01/2018	30.659	27.859	16.242	16.183	19.722

ANALYSIS MOVEMENT OF AVERAGE OVER/(UNDER) RECOVERY

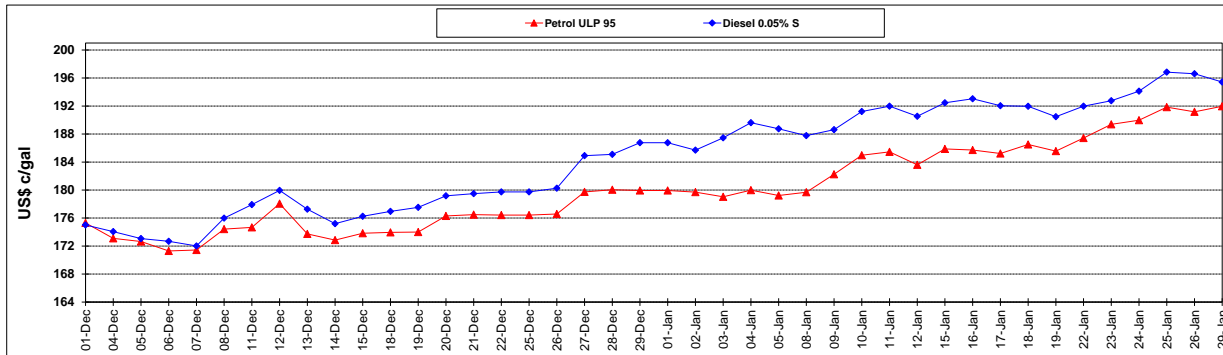
	PETROL 95	PETROL 93	DIESEL 0.05%	DIESEL 0.005%	ILL. PAR.
- MOVEMENT IN INTERNATIONAL PRODUCT PRICES	(20.109)	(22.096)	(36.371)	(36.685)	(33.056)
- MOVEMENT IN EXCHANGE RATE	50.768	49.954	52.613	52.868	52.779
AVERAGE UNIT OVER/(UNDER) RECOVERY 28/12/2017 - 29/01/2018	30.659	27.859	16.242	16.183	19.722

R/\$ EXCHANGE RATE - (R/\$ 11.9643 - 29/01/2018)

EXCHANGE RATE USED IN BASIC FUEL PRICE



INTERNATIONAL PRODUCT PRICES OF BASKET USED IN BASIC FUEL PRICE



BASIC FUEL PRICE IN SA CENTS PER LITRE

