

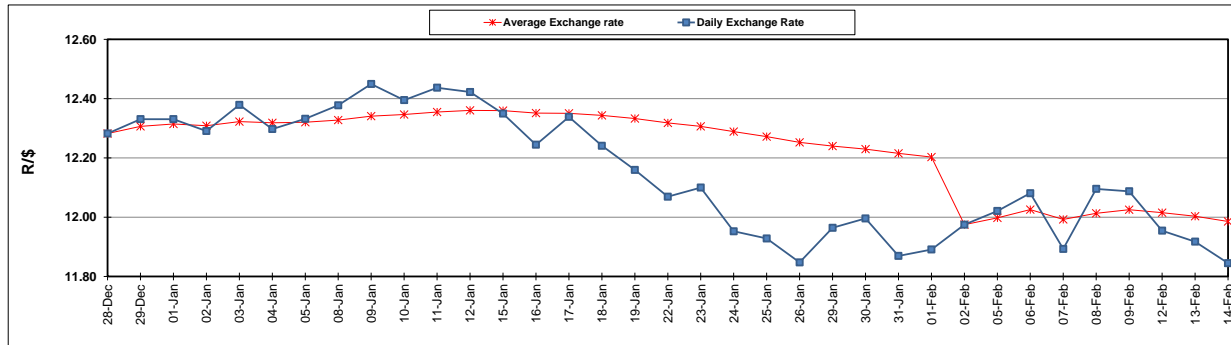
	PETROL 95 ULP	PETROL 93 ULP & LRP	DIESEL 0.05%	DIESEL 0.005%	ILL. PAR.
GAUTENG PUMP PRICE (SA c/l) AS FROM 07/02/2018	1 412.000	1 419.000	-	-	-
WHOLESALE PRICE (SA c/l) AS FROM 07/02/2018	-	-	1 256.630	1 259.030	818.388
SINGLE NATIONAL MAXIMUM RETAIL PRICE	-	-	-	-	1 056.000
BASIC FUEL PRICE - 14/02/2018 (SA c/l)	566.643	552.118	574.277	578.739	600.340
PRESS RELEASE CONTRIBUTION TO BFP 07/02/2018 - 14/02/2018 (SA c/l)	622.170	610.170	645.630	648.030	648.128
UNIT OVER/(UNDER) RECOVERY - 14/02/2018 (SA c/l)	55.527	58.052	71.353	69.291	47.788
AVERAGE BASIC FUEL PRICE 02/02/2018 - 14/02/2018	603.168	588.532	611.061	615.504	630.923
AVERAGE UNIT OVER/(UNDER) RECOVERY 02/02/2018 - 14/02/2018	29.002	31.638	40.235	38.193	23.539

ANALYSIS MOVEMENT OF AVERAGE OVER/(UNDER) RECOVERY

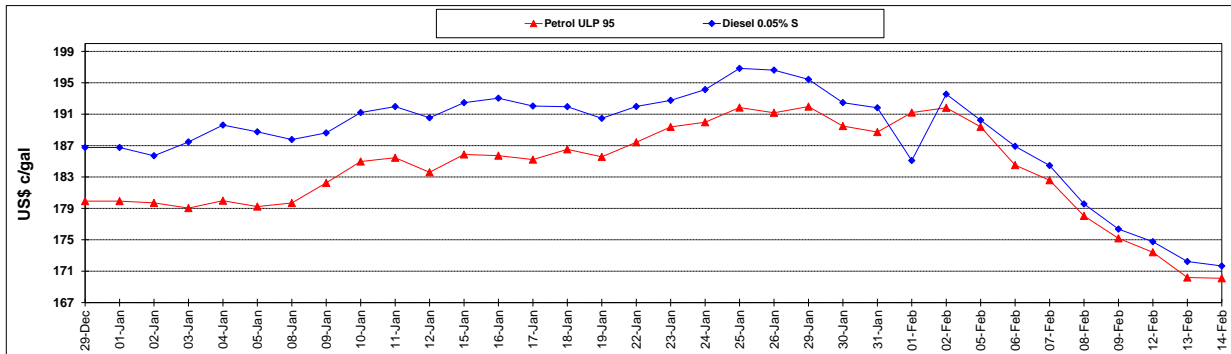
	PETROL 95	PETROL 93	DIESEL 0.05%	DIESEL 0.005%	ILL. PAR.
- MOVEMENT IN INTERNATIONAL PRODUCT PRICES	18.061	20.963	29.152	27.029	12.094
- MOVEMENT IN EXCHANGE RATE	10.941	10.675	11.084	11.164	11.444
AVERAGE UNIT OVER/(UNDER) RECOVERY 02/02/2018 - 14/02/2018	29.002	31.638	40.236	38.193	23.539

R/\$ EXCHANGE RATE - (R/\$ 11.8450 - 14/02/2018)

EXCHANGE RATE USED IN BASIC FUEL PRICE



INTERNATIONAL PRODUCT PRICES OF BASKET USED IN BASIC FUEL PRICE



BASIC FUEL PRICE IN SA CENTS PER LITRE

