

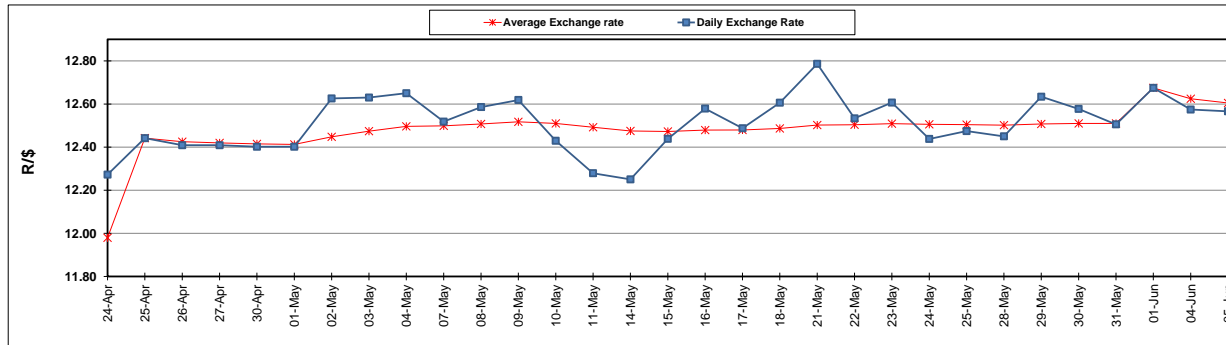
	PETROL 95 ULP	PETROL 93 ULP & LRP	DIESEL 0.05%	DIESEL 0.005%	ILL. PAR.
GAUTENG PUMP PRICE (SA c/l) AS FROM 06/06/2018	1 579.000	1 554.000	-	-	-
WHOLESALE PRICE (SA c/l) AS FROM 06/06/2018	-	-	1 418.830	1 425.230	927.088
SINGLE NATIONAL MAXIMUM RETAIL PRICE	-	-	-	-	1 198.000
BASIC FUEL PRICE - 05/06/2018 (SA c/l)	707.074	693.722	723.475	728.107	724.615
PRESS RELEASE CONTRIBUTION TO BFP 01/06/2018 - 05/06/2018 (SA c/l)	645.070	630.070	660.630	665.030	672.128
UNIT OVER/(UNDER) RECOVERY - 05/06/2018 (SA c/l)	(62.004)	(63.652)	(62.845)	(63.077)	(52.487)
AVERAGE BASIC FUEL PRICE 01/06/2018 - 05/06/2018	717.335	703.946	732.558	737.345	734.538
AVERAGE UNIT OVER/(UNDER) RECOVERY 01/06/2018 - 05/06/2018	(72.265)	(73.876)	(71.928)	(72.315)	(62.410)

ANALYSIS MOVEMENT OF AVERAGE OVER/(UNDER) RECOVERY

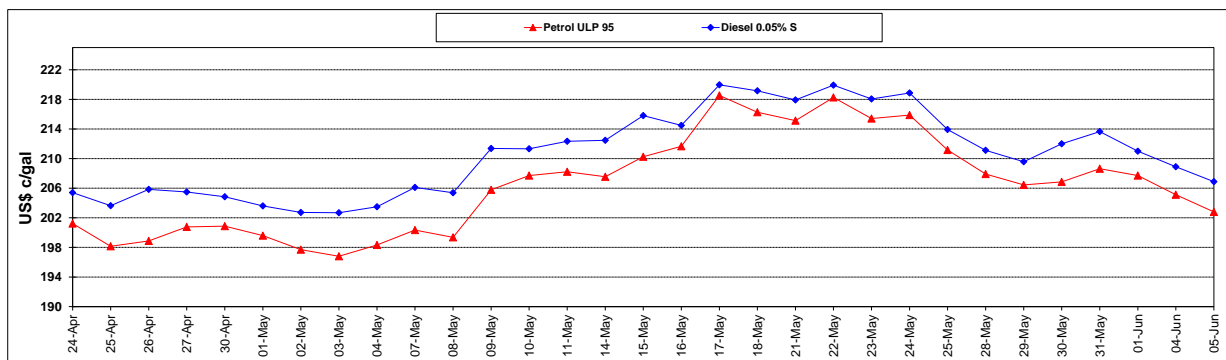
	PETROL 95	PETROL 93	DIESEL 0.05%	DIESEL 0.005%	ILL. PAR.
- MOVEMENT IN INTERNATIONAL PRODUCT PRICES	(66.853)	(68.565)	(66.401)	(66.752)	(56.868)
- MOVEMENT IN EXCHANGE RATE	(5.412)	(5.311)	(5.527)	(5.563)	(5.542)
AVERAGE UNIT OVER/(UNDER) RECOVERY 01/06/2018 - 05/06/2018	(72.265)	(73.876)	(71.928)	(72.315)	(62.410)

R/\$ EXCHANGE RATE - (R/\$12.5660 - 05/06/2018)

EXCHANGE RATE USED IN BASIC FUEL PRICE



INTERNATIONAL PRODUCT PRICES OF BASKET USED IN BASIC FUEL PRICE



BASIC FUEL PRICE IN SA CENTS PER LITRE

