

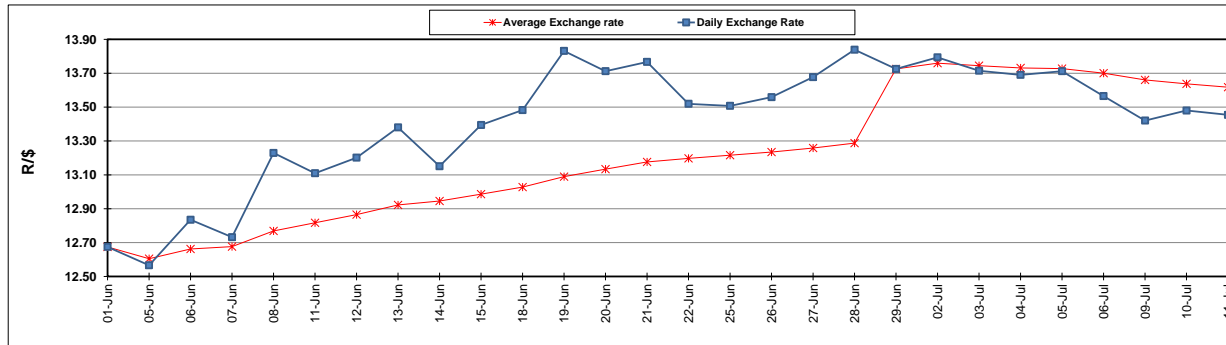
	PETROL 95 ULP	PETROL 93 ULP & LRP	DIESEL 0.05%	DIESEL 0.005%	ILL. PAR.
GAUTENG PUMP PRICE (SA c/l) AS FROM 04/07/2018	1 602.000	1 581.000	-	-	-
WHOLESALE PRICE (SA c/l) AS FROM 04/07/2018	-	-	1 444.830	1 449.230	949.088
SINGLE NATIONAL MAXIMUM RETAIL PRICE	-	-	-	-	1 228.000
BASIC FUEL PRICE - 11/07/2018 (SA c/l)	755.191	746.400	773.181	778.426	788.428
PRESS RELEASE CONTRIBUTION TO BFP 04/07/2018 - 11/07/2018 (SA c/l)	750.070	739.070	771.630	776.030	776.128
UNIT OVER/(UNDER) RECOVERY - 11/07/2018 (SA c/l)	(5.121)	(7.330)	(1.551)	(2.396)	(12.300)
AVERAGE BASIC FUEL PRICE 29/06/2018 - 11/07/2018	767.295	756.827	784.230	789.277	798.890
AVERAGE UNIT OVER/(UNDER) RECOVERY 29/06/2018 - 11/07/2018	(24.892)	(26.757)	(21.267)	(21.247)	(30.095)

ANALYSIS MOVEMENT OF AVERAGE OVER/(UNDER) RECOVERY

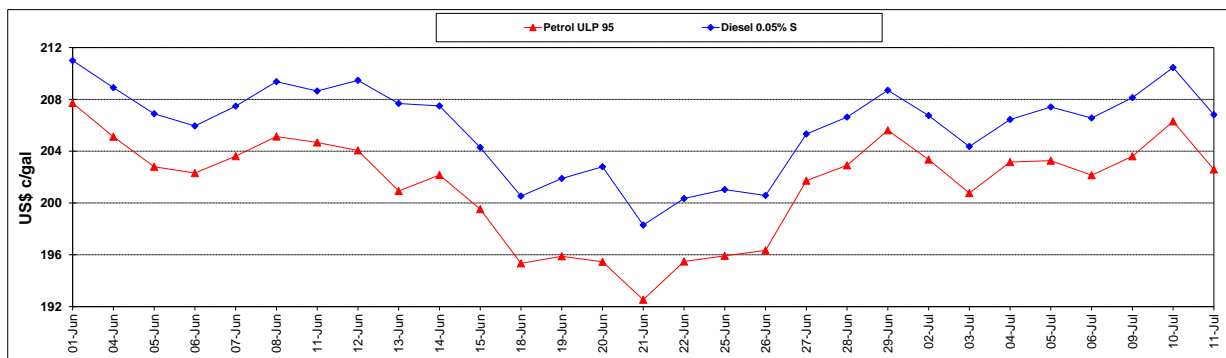
	PETROL 95	PETROL 93	DIESEL 0.05%	DIESEL 0.005%	ILL. PAR.
- MOVEMENT IN INTERNATIONAL PRODUCT PRICES	(6.292)	(8.410)	(2.256)	(2.114)	(10.729)
- MOVEMENT IN EXCHANGE RATE	(18.600)	(18.347)	(19.011)	(19.133)	(19.366)
AVERAGE UNIT OVER/(UNDER) RECOVERY 29/06/2018 - 11/07/2018	(24.892)	(26.757)	(21.267)	(21.247)	(30.095)

R/\$ EXCHANGE RATE - (R/\$13.4540 - 11/07/2018)

EXCHANGE RATE USED IN BASIC FUEL PRICE



INTERNATIONAL PRODUCT PRICES OF BASKET USED IN BASIC FUEL PRICE



BASIC FUEL PRICE IN SA CENTS PER LITRE

