

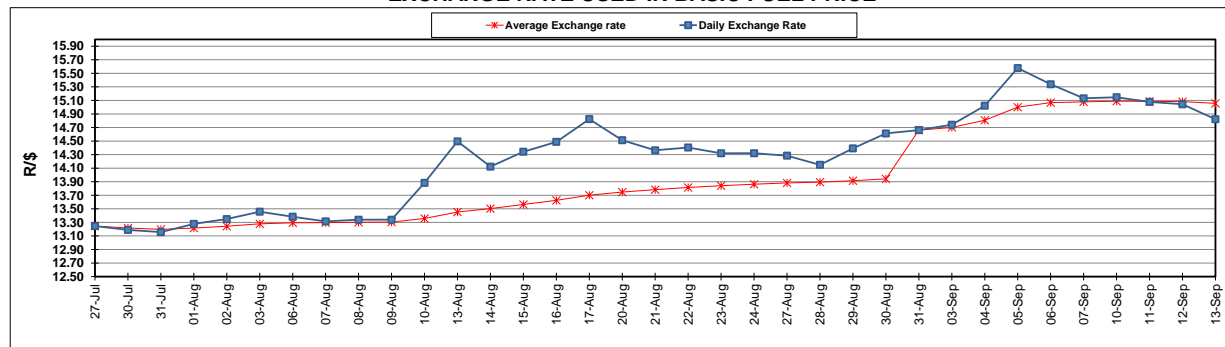
	PETROL 95 ULP	PETROL 93 ULP & LRP	DIESEL 0.05%	DIESEL 0.005%	ILL. PAR.
GAUTENG PUMP PRICE (SA c/l) AS FROM 05/09/2018	1 608.000	1 586.000	-	-	-
WHOLESALE PRICE (SA c/l) AS FROM 05/09/2018	-	-	1 440.830	1 445.230	953.088
SINGLE NATIONAL MAXIMUM RETAIL PRICE	-	-	-	-	1 233.000
BASIC FUEL PRICE - 13/09/2018 (SA c/l)	844.100	833.232	886.373	891.522	881.018
PRESS RELEASE CONTRIBUTION TO BFP 05/09/2018 - 13/09/2018 (SA c/l)	751.170	739.170	767.630	772.030	780.128
UNIT OVER/(UNDER) RECOVERY - 13/09/2018 (SA c/l)	(92.930)	(94.062)	(118.743)	(119.492)	(100.890)
AVERAGE BASIC FUEL PRICE 31/08/2018 - 13/09/2018	861.355	849.225	902.904	907.805	895.299
AVERAGE UNIT OVER/(UNDER) RECOVERY 31/08/2018 - 13/09/2018	(110.215)	(110.085)	(135.274)	(135.775)	(115.171)

ANALYSIS MOVEMENT OF AVERAGE OVER/(UNDER) RECOVERY

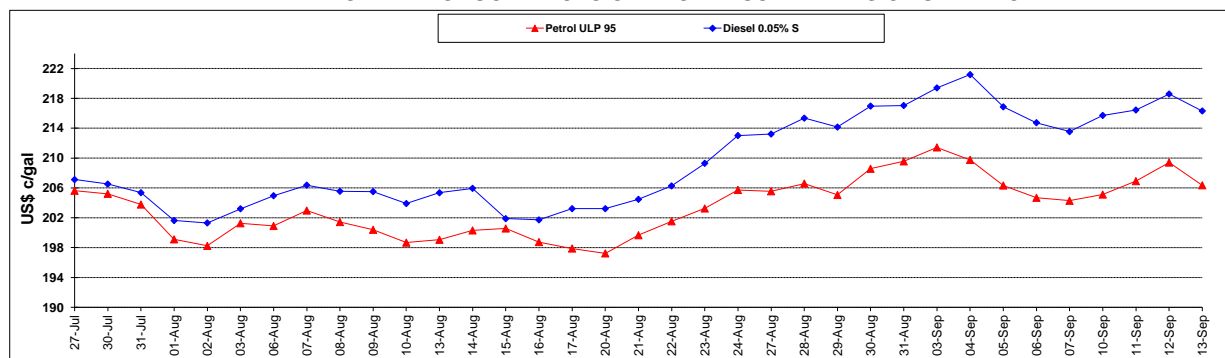
	PETROL 95	PETROL 93	DIESEL 0.05%	DIESEL 0.005%	ILL. PAR.
- MOVEMENT IN INTERNATIONAL PRODUCT PRICES	(46.519)	(47.286)	(68.505)	(68.644)	(48.955)
- MOVEMENT IN EXCHANGE RATE	(63.696)	(62.799)	(66.769)	(67.131)	(66.206)
AVERAGE UNIT OVER/(UNDER) RECOVERY 31/08/2018 - 13/09/2018	(110.215)	(110.085)	(135.274)	(135.775)	(115.171)

R/\$ EXCHANGE RATE - (R/\$14.8228 - 13/09/2018)

EXCHANGE RATE USED IN BASIC FUEL PRICE



INTERNATIONAL PRODUCT PRICES OF BASKET USED IN BASIC FUEL PRICE



BASIC FUEL PRICE IN SA CENTS PER LITRE

