

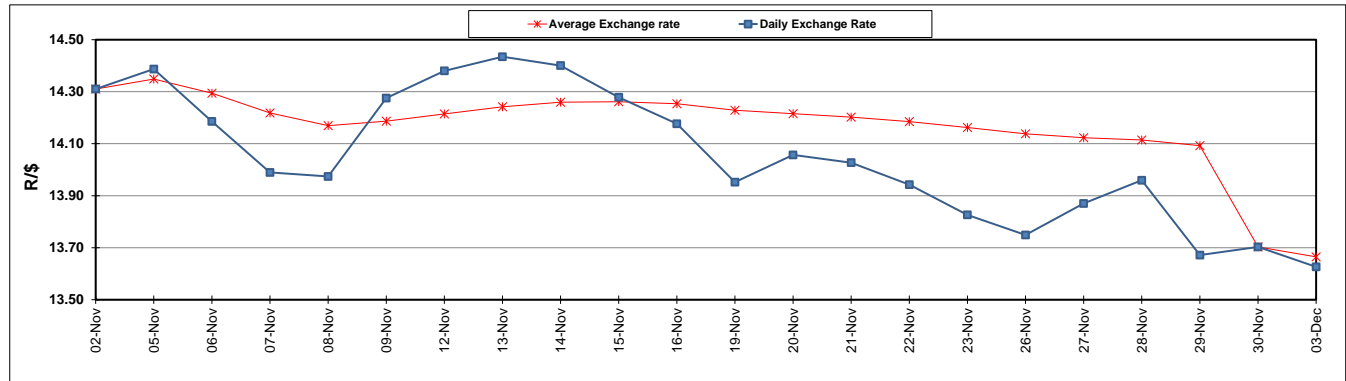
	PETROL 95 ULP	PETROL 93 ULP & LRP	DIESEL 0.05%	DIESEL 0.005%	ILL. PAR.
GAUTENG PUMP PRICE (SA c/l) AS FROM 05/12/2018	1 524.000	1 501.000	-	-	-
WHOLESALE PRICE (SA c/l) AS FROM 05/12/2018	-	-	1 467.340	1 472.740	951.678
SINGLE NATIONAL MAXIMUM RETAIL PRICE	-	-	-	-	1 231.000
BASIC FUEL PRICE - 03/12/2018 (SA c/l)	570.726	559.866	668.126	671.374	680.991
PRESS RELEASE CONTRIBUTION TO BFP 30/11/2018 - 03/12/2018 (SA c/l)	829.250	816.250	917.630	925.030	912.128
UNIT OVER/(UNDER) RECOVERY - 03/12/2018 (SA c/l)	258.524	256.384	249.504	253.656	231.137
AVERAGE BASIC FUEL PRICE 30/11/2018 - 03/12/2018	564.952	555.937	658.694	661.979	672.446
AVERAGE UNIT OVER/(UNDER) RECOVERY 30/11/2018 - 03/12/2018	264.299	260.314	258.937	263.051	239.683

ANALYSIS MOVEMENT OF AVERAGE OVER/(UNDER) RECOVERY

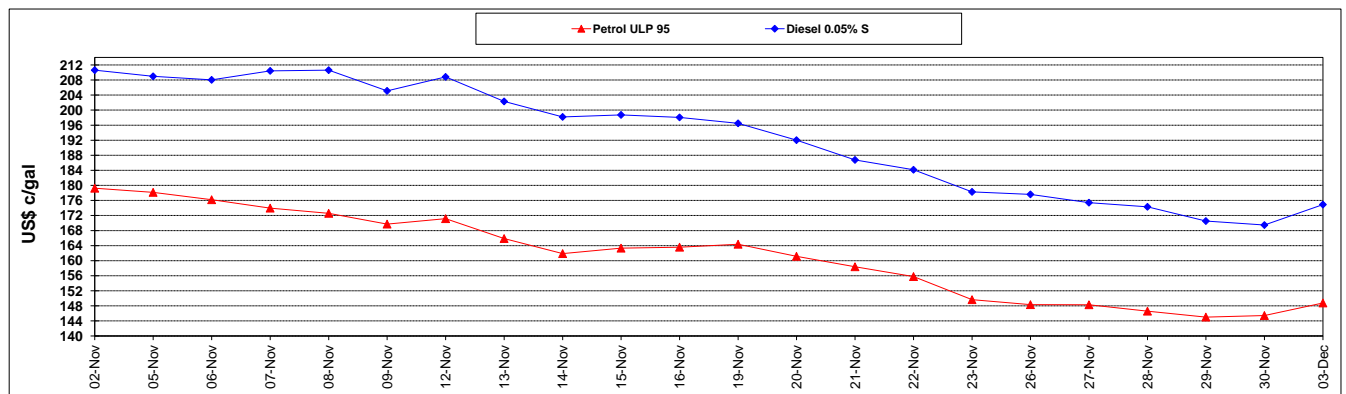
	PETROL 95	PETROL 93	DIESEL 0.05%	DIESEL 0.005%	ILL. PAR.
- MOVEMENT IN INTERNATIONAL PRODUCT PRICES	246.619	242.916	238.324	242.336	218.640
- MOVEMENT IN EXCHANGE RATE	17.679	17.397	20.612	20.715	21.042
AVERAGE UNIT OVER/(UNDER) RECOVERY 30/11/2018 - 03/12/2018	264.299	260.314	258.937	263.051	239.683

R/\$ EXCHANGE RATE - (R/\$13.6263 - 03/12/2018)

EXCHANGE RATE USED IN BASIC FUEL PRICE



INTERNATIONAL PRODUCT PRICES OF BASKET USED IN BASIC FUEL PRICE



BASIC FUEL PRICE IN SA CENTS PER LITRE

