

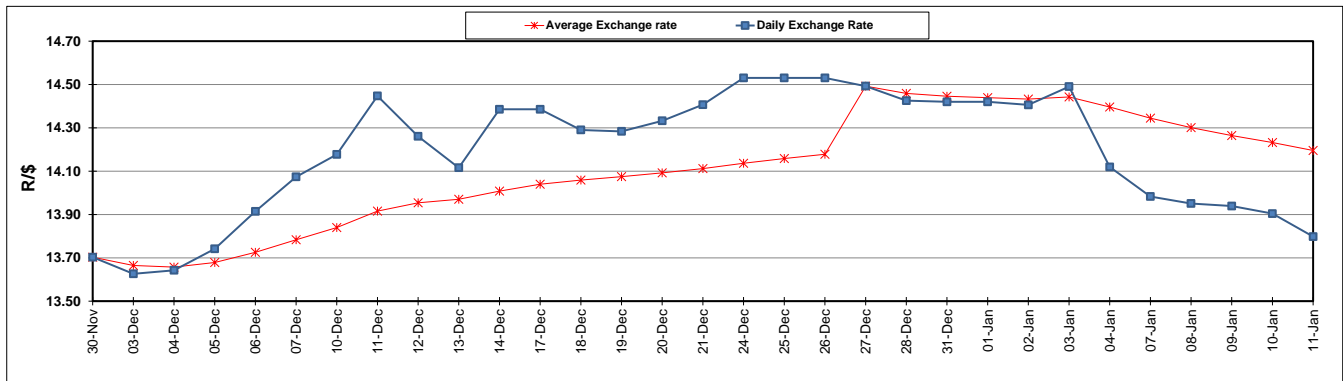
	PETROL 95 ULP	PETROL 93 ULP & LRP	DIESEL 0.05%	DIESEL 0.005%	ILL. PAR.
GAUTENG PUMP PRICE (SA c/l) AS FROM 02/01/2019	1 401.000	1 379.000	-	-	-
WHOLESALE PRICE (SA c/l) AS FROM 02/01/2019	-	-	1 313.420	1 316.820	828.678
SINGLE NATIONAL MAXIMUM RETAIL PRICE	-	-	-	-	1 067.000
BASIC FUEL PRICE - 11/01/2019 (SA c/l)	575.453	563.702	674.680	678.276	683.669
PRESS RELEASE CONTRIBUTION TO BFP 02/01/2018 - 11/01/2019 (SA c/l)	536.470	524.470	635.630	638.030	651.128
UNIT OVER/(UNDER) RECOVERY - 11/01/2019 (SA c/l)	(38.983)	(39.232)	(39.050)	(40.246)	(32.541)
AVERAGE BASIC FUEL PRICE 27/12/2018 - 11/01/2019	551.399	538.989	634.427	638.531	650.346
AVERAGE UNIT OVER/(UNDER) RECOVERY 27/12/2018 - 11/01/2019	18.765	18.841	45.203	44.499	41.782

### ANALYSIS MOVEMENT OF AVERAGE OVER/(UNDER) RECOVERY

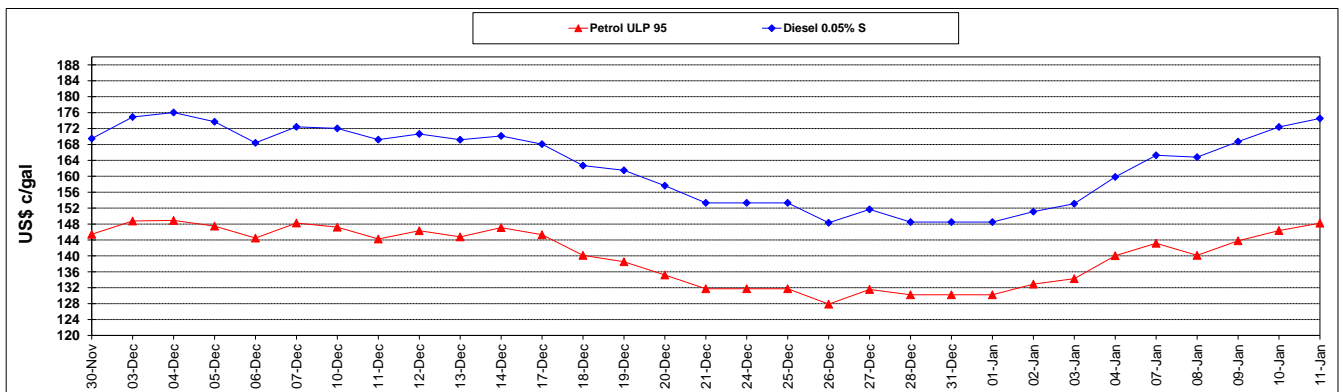
	PETROL 95	PETROL 93	DIESEL 0.05%	DIESEL 0.005%	ILL. PAR.
- MOVEMENT IN INTERNATIONAL PRODUCT PRICES	19.459	19.521	46.003	45.304	42.602
- MOVEMENT IN EXCHANGE RATE	(0.695)	(0.680)	(0.800)	(0.805)	(0.820)
AVERAGE UNIT OVER/(UNDER) RECOVERY 27/12/2018 - 11/01/2019	18.765	18.841	45.203	44.499	41.782

### R/\$ EXCHANGE RATE - (R/\$13.7980 - 11/01/2019)

#### EXCHANGE RATE USED IN BASIC FUEL PRICE



#### INTERNATIONAL PRODUCT PRICES OF BASKET USED IN BASIC FUEL PRICE



#### BASIC FUEL PRICE IN SA CENTS PER LITRE

