

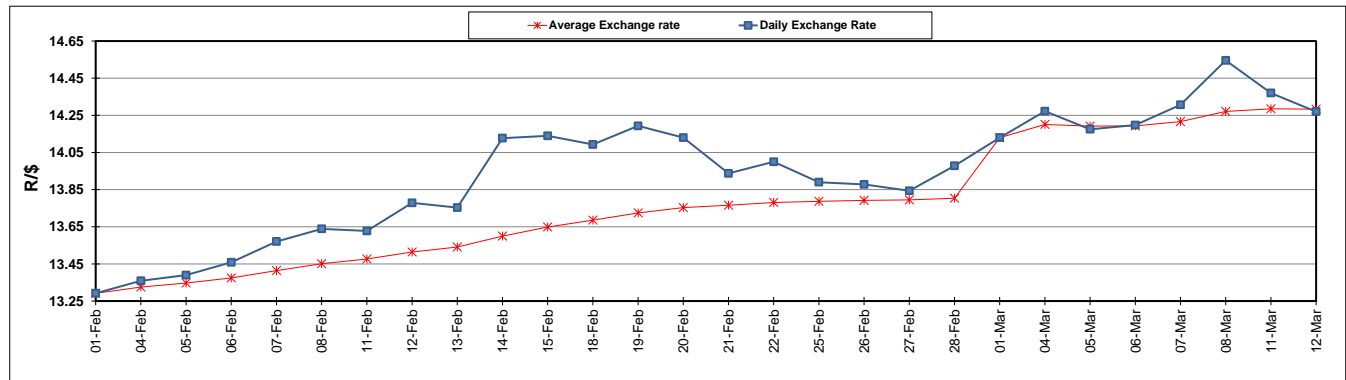
	PETROL 95 ULP	PETROL 93 ULP & LRP	DIESEL 0.05%	DIESEL 0.005%	ILL. PAR.
GAUTENG PUMP PRICE (SA c/l) AS FROM 06/03/2019	1 482.000	1 460.000	-	-	-
WHOLESALE PRICE (SA c/l) AS FROM 06/03/2019	-	-	1 405.420	1 411.820	899.678
SINGLE NATIONAL MAXIMUM RETAIL PRICE	-	-	-	-	1 162.000
BASIC FUEL PRICE - 12/03/2019 (SA c/l)	702.441	692.811	765.075	772.081	760.884
PRESS RELEASE CONTRIBUTION TO BFP 06/03/2019 - 12/03/2019 (SA c/l)	617.470	605.470	727.630	734.030	722.128
UNIT OVER/(UNDER) RECOVERY - 12/03/2019 (SA c/l)	(84.971)	(87.341)	(37.445)	(38.051)	(38.756)
AVERAGE BASIC FUEL PRICE 01/03/2019 - 12/03/2019	684.352	674.229	768.522	776.166	760.299
AVERAGE UNIT OVER/(UNDER) RECOVERY 01/03/2019 - 12/03/2019	(94.632)	(96.509)	(75.017)	(77.011)	(66.671)

ANALYSIS MOVEMENT OF AVERAGE OVER/(UNDER) RECOVERY

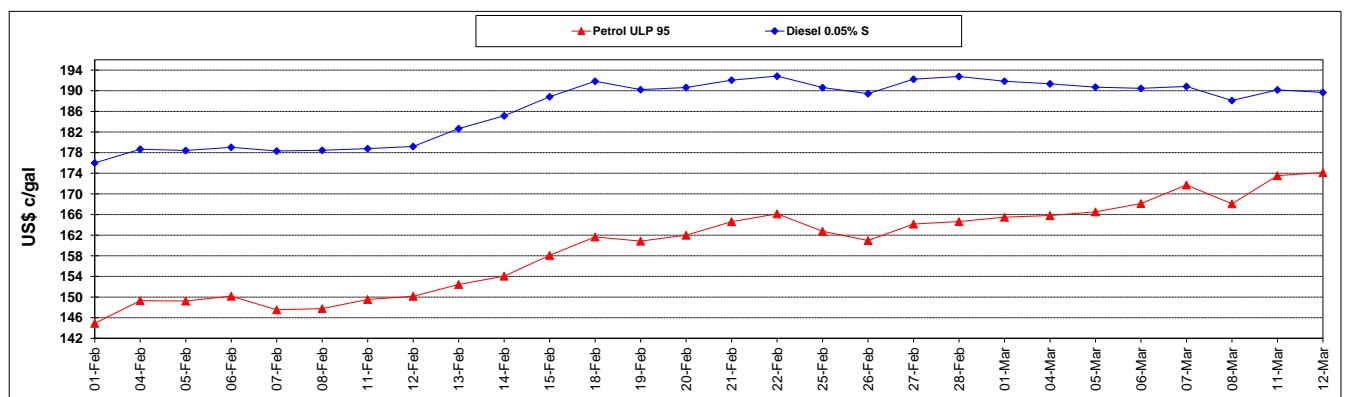
	PETROL 95	PETROL 93	DIESEL 0.05%	DIESEL 0.005%	ILL. PAR.
- MOVEMENT IN INTERNATIONAL PRODUCT PRICES	(71.658)	(73.875)	(49.217)	(50.955)	(41.147)
- MOVEMENT IN EXCHANGE RATE	(22.974)	(22.634)	(25.800)	(26.056)	(25.524)
AVERAGE UNIT OVER/(UNDER) RECOVERY 01/03/2019 - 12/03/2019	(94.632)	(96.509)	(75.017)	(77.011)	(66.671)

R/\$ EXCHANGE RATE - (R/\$14.2700 - 12/03/2019)

EXCHANGE RATE USED IN BASIC FUEL PRICE



INTERNATIONAL PRODUCT PRICES OF BASKET USED IN BASIC FUEL PRICE



BASIC FUEL PRICE IN SA CENTS PER LITRE

