

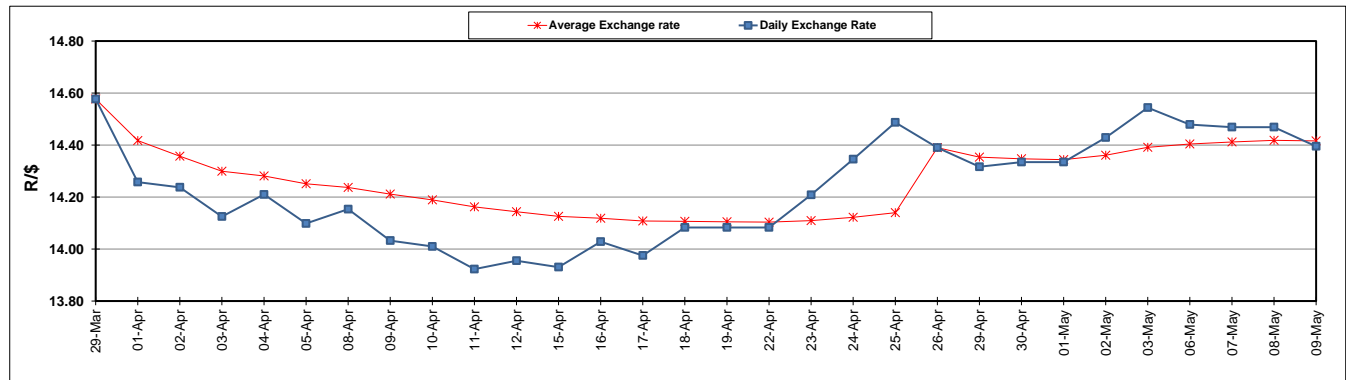
	PETROL 95 ULP	PETROL 93 ULP & LRP	DIESEL 0.05%	DIESEL 0.005%	ILL. PAR.
GAUTENG PUMP PRICE (SA c/l) AS FROM 01/05/2019	1 667.000	1 648.000	-	-	-
WHOLESALE PRICE (SA c/l) AS FROM 01/05/2019	-	-	1 488.120	1 494.520	965.678
SINGLE NATIONAL MAXIMUM RETAIL PRICE	-	-	-	-	1 231.000
BASIC FUEL PRICE - 09/05/2019 (SA c/l)	733.020	721.066	788.926	795.222	782.343
PRESS RELEASE CONTRIBUTION TO BFP 01/05/2019 - 09/05/2019 (SA c/l)	777.170	768.170	784.630	791.030	781.128
UNIT OVER/(UNDER) RECOVERY - 09/05/2019 (SA c/l)	44.150	47.104	(4.296)	(4.192)	(1.215)
AVERAGE BASIC FUEL PRICE 26/04/2019 - 09/05/2019	765.238	754.206	797.880	804.594	791.461
AVERAGE UNIT OVER/(UNDER) RECOVERY 26/04/2019 - 09/05/2019	(4.268)	(2.236)	(13.550)	(13.564)	(11.233)

ANALYSIS MOVEMENT OF AVERAGE OVER/(UNDER) RECOVERY

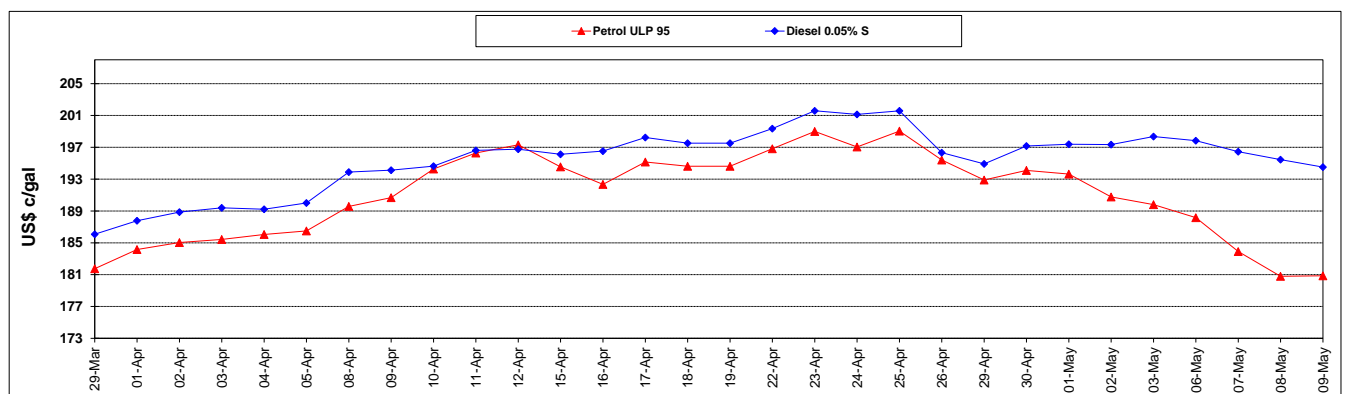
	PETROL 95	PETROL 93	DIESEL 0.05%	DIESEL 0.005%	ILL. PAR.
- MOVEMENT IN INTERNATIONAL PRODUCT PRICES	10.377	12.198	1.720	1.835	3.914
- MOVEMENT IN EXCHANGE RATE	(14.645)	(14.434)	(15.270)	(15.399)	(15.147)
AVERAGE UNIT OVER/(UNDER) RECOVERY 26/04/2019 - 09/05/2019	(4.268)	(2.236)	(13.550)	(13.564)	(11.233)

R/\$ EXCHANGE RATE - (R/\$14.3950 - 09/05/2019)

EXCHANGE RATE USED IN BASIC FUEL PRICE



INTERNATIONAL PRODUCT PRICES OF BASKET USED IN BASIC FUEL PRICE



BASIC FUEL PRICE IN SA CENTS PER LITRE

