

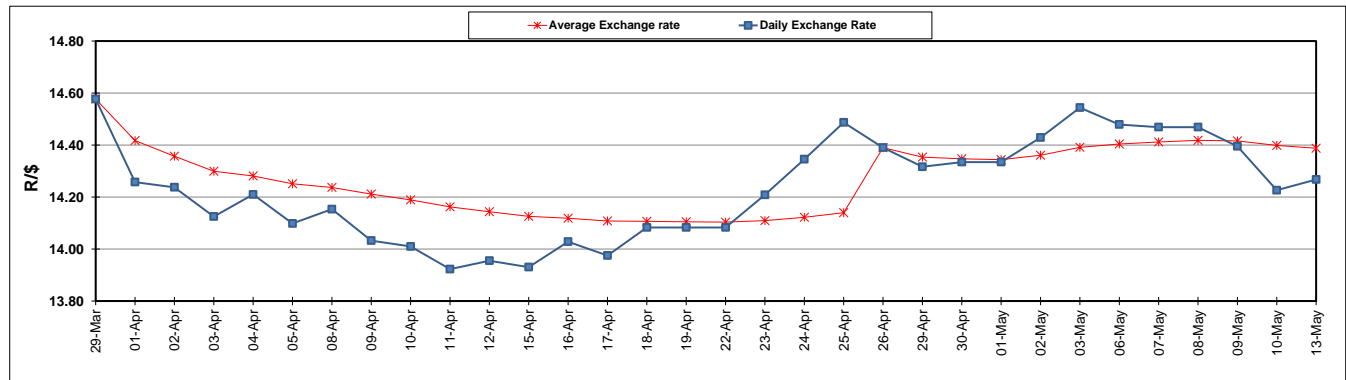
	PETROL 95 ULP	PETROL 93 ULP & LRP	DIESEL 0.05%	DIESEL 0.005%	ILL. PAR.
GAUTENG PUMP PRICE (SA c/l) AS FROM 01/05/2019	1 667.000	1 648.000	-	-	-
WHOLESALE PRICE (SA c/l) AS FROM 01/05/2019	-	-	1 488.120	1 494.520	965.678
SINGLE NATIONAL MAXIMUM RETAIL PRICE	-	-	-	-	1 231.000
BASIC FUEL PRICE - 13/05/2019 (SA c/l)	748.783	737.484	795.565	802.411	789.210
PRESS RELEASE CONTRIBUTION TO BFP 01/05/2019 - 13/05/2019 (SA c/l)	777.170	768.170	784.630	791.030	781.128
UNIT OVER/(UNDER) RECOVERY - 13/05/2019 (SA c/l)	28.387	30.686	(10.935)	(11.381)	(8.082)
AVERAGE BASIC FUEL PRICE 26/04/2019 - 13/05/2019	762.014	750.895	796.802	803.467	790.390
AVERAGE UNIT OVER/(UNDER) RECOVERY 26/04/2019 - 13/05/2019	1.656	3.775	(12.422)	(12.437)	(10.012)

### ANALYSIS MOVEMENT OF AVERAGE OVER/(UNDER) RECOVERY

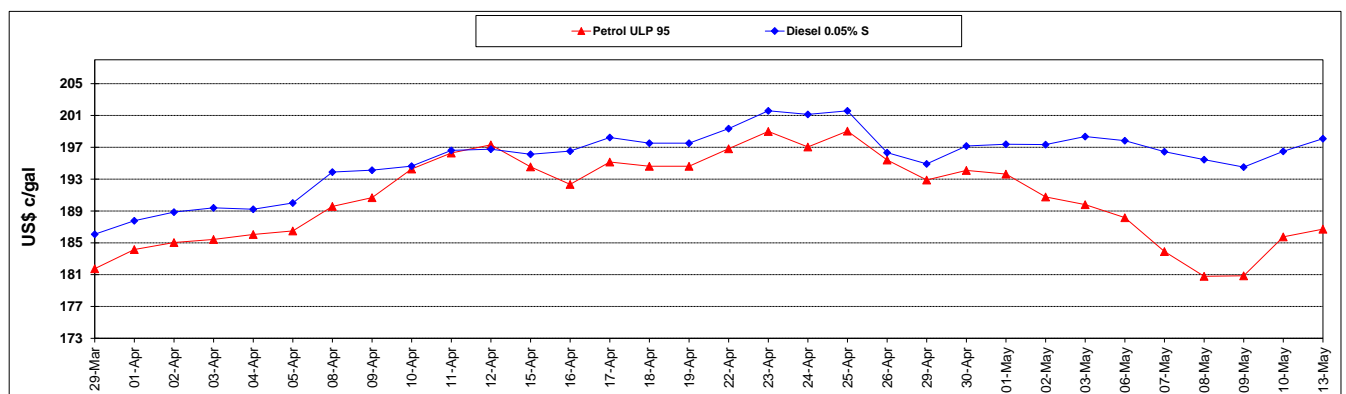
	PETROL 95	PETROL 93	DIESEL 0.05%	DIESEL 0.005%	ILL. PAR.
- MOVEMENT IN INTERNATIONAL PRODUCT PRICES	14.775	16.702	1.296	1.395	3.595
- MOVEMENT IN EXCHANGE RATE	(13.119)	(12.927)	(13.718)	(13.832)	(13.607)
AVERAGE UNIT OVER/(UNDER) RECOVERY 26/04/2019 - 13/05/2019	1.656	3.775	(12.422)	(12.437)	(10.012)

### R/\$ EXCHANGE RATE - (R/\$14.2675 - 13/05/2019)

#### EXCHANGE RATE USED IN BASIC FUEL PRICE



#### INTERNATIONAL PRODUCT PRICES OF BASKET USED IN BASIC FUEL PRICE



#### BASIC FUEL PRICE IN SA CENTS PER LITRE

