

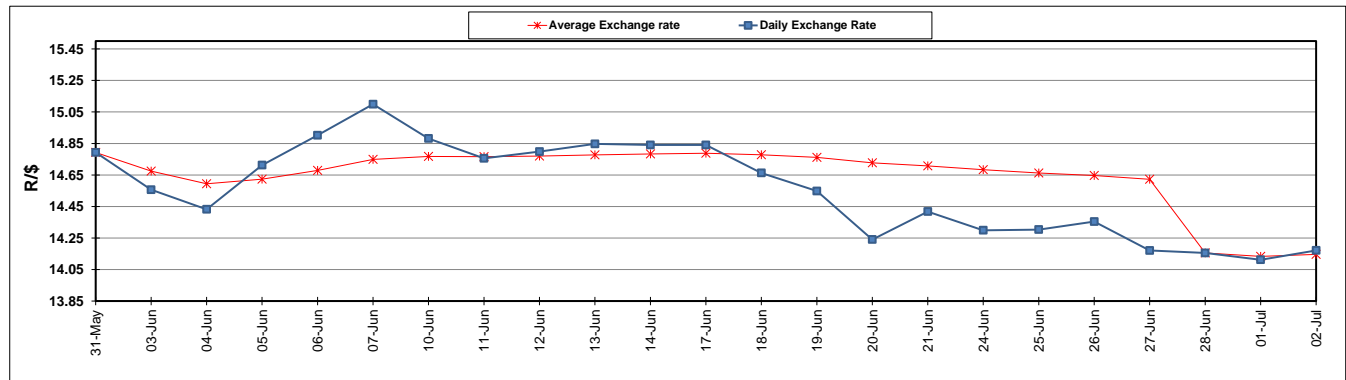
	PETROL 95 ULP	PETROL 93 ULP & LRP	DIESEL 0.05%	DIESEL 0.005%	ILL. PAR.
GAUTENG PUMP PRICE (SA c/l) AS FROM 03/07/2019	1 581.000	1 561.000	-	-	-
WHOLESALE PRICE (SA c/l) AS FROM 03/07/2019	-	-	1 446.500	1 451.900	916.678
SINGLE NATIONAL MAXIMUM RETAIL PRICE	-	-	-	-	1 165.000
BASIC FUEL PRICE - 02/07/2019 (SA c/l)	689.948	681.831	726.941	731.724	732.812
PRESS RELEASE CONTRIBUTION TO BFP 28/06/2019 - 02/07/2019 (SA c/l)	764.010	755.010	794.630	801.030	789.128
UNIT OVER/(UNDER) RECOVERY - 02/07/2019 (SA c/l)	74.062	73.179	67.689	69.306	56.316
AVERAGE BASIC FUEL PRICE 28/06/2019 - 02/07/2019	696.608	687.445	734.782	739.423	740.966
AVERAGE UNIT OVER/(UNDER) RECOVERY 28/06/2019 - 02/07/2019	67.402	67.565	59.848	61.607	48.162

ANALYSIS MOVEMENT OF AVERAGE OVER/(UNDER) RECOVERY

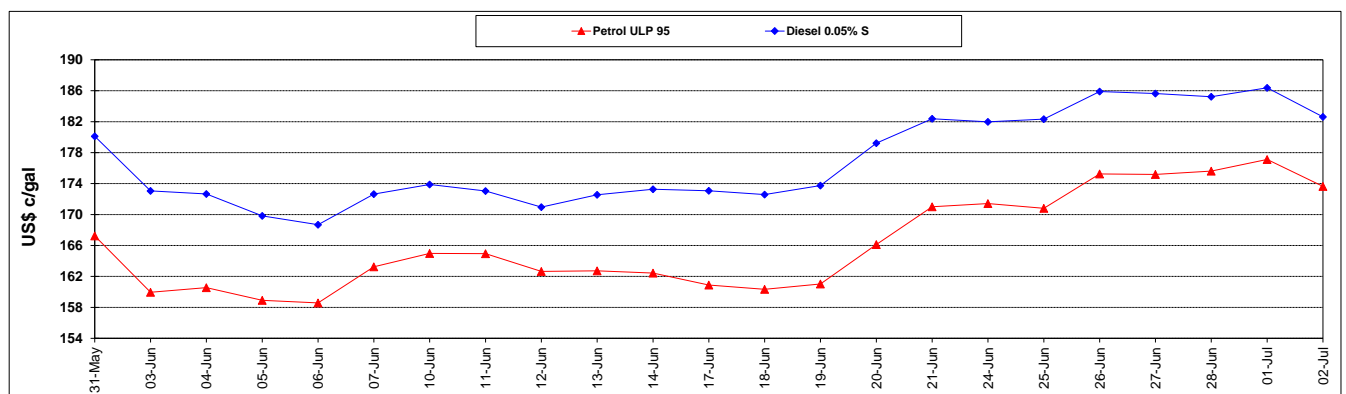
	PETROL 95	PETROL 93	DIESEL 0.05%	DIESEL 0.005%	ILL. PAR.
- MOVEMENT IN INTERNATIONAL PRODUCT PRICES	43.932	44.404	35.092	36.695	23.198
- MOVEMENT IN EXCHANGE RATE	23.470	23.161	24.756	24.912	24.964
AVERAGE UNIT OVER/(UNDER) RECOVERY 28/06/2019 - 02/07/2019	67.402	67.565	59.848	61.607	48.162

R/\$ EXCHANGE RATE - (R/\$14.1713 - 02/07/2019)

EXCHANGE RATE USED IN BASIC FUEL PRICE



INTERNATIONAL PRODUCT PRICES OF BASKET USED IN BASIC FUEL PRICE



BASIC FUEL PRICE IN SA CENTS PER LITRE

