

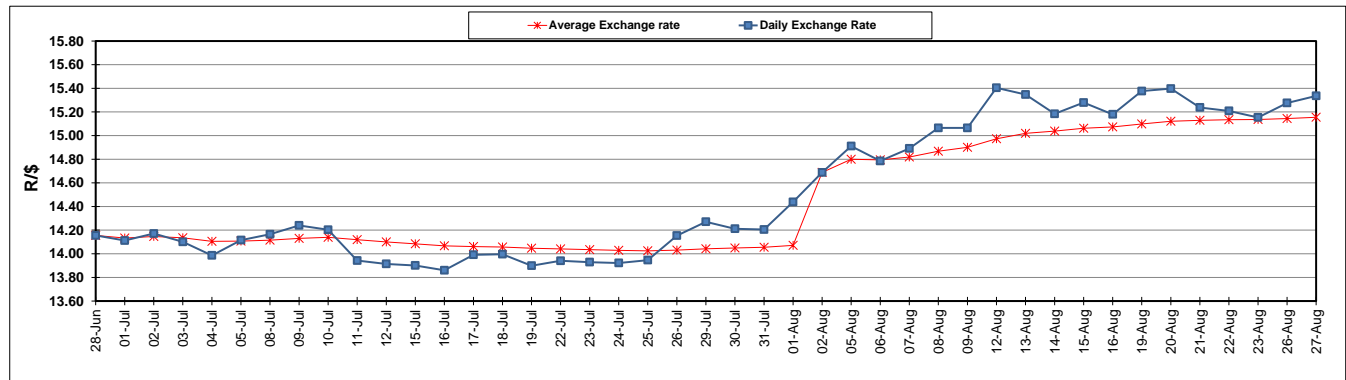
	PETROL 95 ULP	PETROL 93 ULP & LRP	DIESEL 0.05%	DIESEL 0.005%	ILL. PAR.
GAUTENG PUMP PRICE (SA c/l) AS FROM 08/08/2019	1 592.000	1 572.000	-	-	-
WHOLESALE PRICE (SA c/l) AS FROM 08/08/2019	-	-	1 433.210	1 437.610	914.678
SINGLE NATIONAL MAXIMUM RETAIL PRICE	-	-	-	-	1 163.000
BASIC FUEL PRICE - 27/08/2019 (SA c/l)	701.723	678.256	744.570	749.062	753.549
PRESS RELEASE CONTRIBUTION TO BFP 07/08/2019 - 27/08/2019 (SA c/l)	693.170	683.170	719.630	724.030	730.128
UNIT OVER/(UNDER) RECOVERY - 27/08/2019 (SA c/l)	(8.553)	4.914	(24.940)	(25.032)	(23.421)
AVERAGE BASIC FUEL PRICE 02/08/2019 - 27/08/2019	700.288	677.478	745.779	749.673	751.755
AVERAGE UNIT OVER/(UNDER) RECOVERY 02/08/2019 - 27/08/2019	(9.681)	3.129	(24.649)	(23.976)	(21.294)

### ANALYSIS MOVEMENT OF AVERAGE OVER/(UNDER) RECOVERY

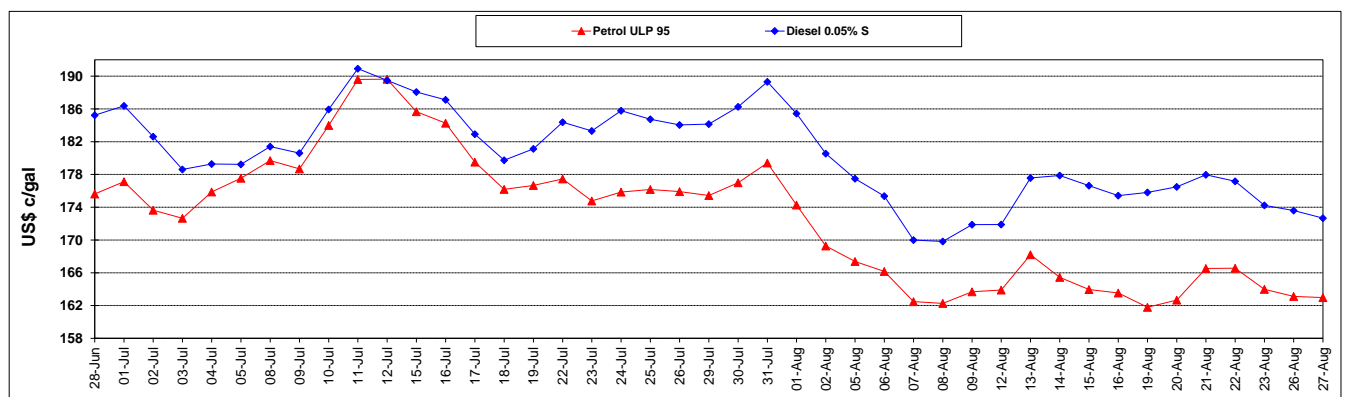
	PETROL 95	PETROL 93	DIESEL 0.05%	DIESEL 0.005%	ILL. PAR.
- MOVEMENT IN INTERNATIONAL PRODUCT PRICES	40.409	51.588	28.695	29.647	32.478
- MOVEMENT IN EXCHANGE RATE	(50.090)	(48.459)	(53.344)	(53.623)	(53.772)
AVERAGE UNIT OVER/(UNDER) RECOVERY 02/08/2019 - 27/08/2019	(9.681)	3.129	(24.649)	(23.976)	(21.294)

### R/\$ EXCHANGE RATE - (R/\$15.3361 - 27/08/2019)

### EXCHANGE RATE USED IN BASIC FUEL PRICE



### INTERNATIONAL PRODUCT PRICES OF BASKET USED IN BASIC FUEL PRICE



### BASIC FUEL PRICE IN SA CENTS PER LITRE

