

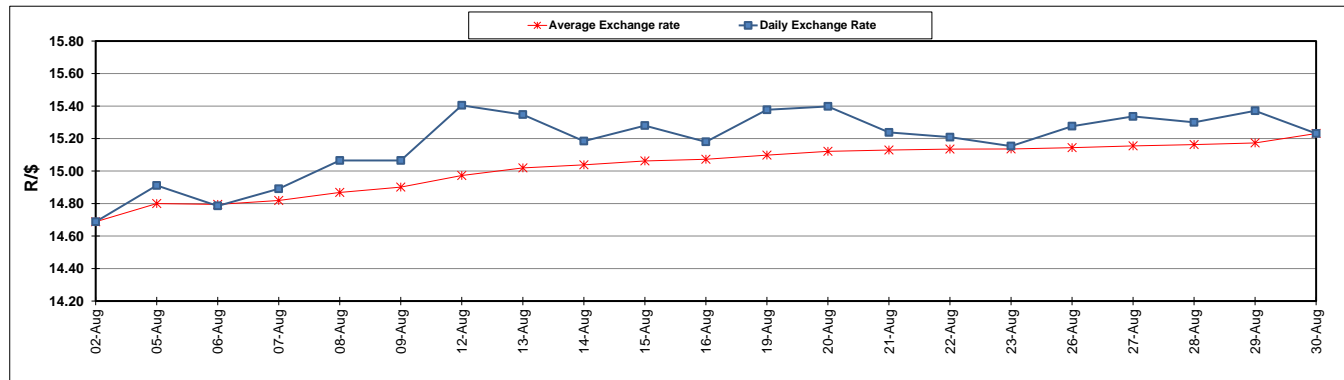
	PETROL 95 ULP	PETROL 93 ULP & LRP	DIESEL 0.05%	DIESEL 0.005%	ILL. PAR.
GAUTENG PUMP PRICE (SA c/l) AS FROM 04/09/2019	1 603.000	1 583.000	-	-	-
WHOLESALE PRICE (SA c/l) AS FROM 04/09/2019	-	-	1 459.210	1 463.610	936.678
SINGLE NATIONAL MAXIMUM RETAIL PRICE	-	-	-	-	1 195.000
BASIC FUEL PRICE - 30/08/2019 (SA c/l)	706.882	684.038	757.681	761.019	760.906
PRESS RELEASE CONTRIBUTION TO BFP 30/08/2019 - 30/08/2019 (SA c/l)	693.170	683.170	719.630	724.030	730.128
UNIT OVER/(UNDER) RECOVERY - 30/08/2019 (SA c/l)	(13.712)	(0.868)	(38.051)	(36.989)	(30.778)
AVERAGE BASIC FUEL PRICE 30/08/2019 - 30/08/2019	706.882	684.038	757.681	761.019	760.906
AVERAGE UNIT OVER/(UNDER) RECOVERY 30/08/2019 - 30/08/2019	(13.712)	(0.868)	(38.051)	(36.989)	(30.778)

ANALYSIS MOVEMENT OF AVERAGE OVER/(UNDER) RECOVERY

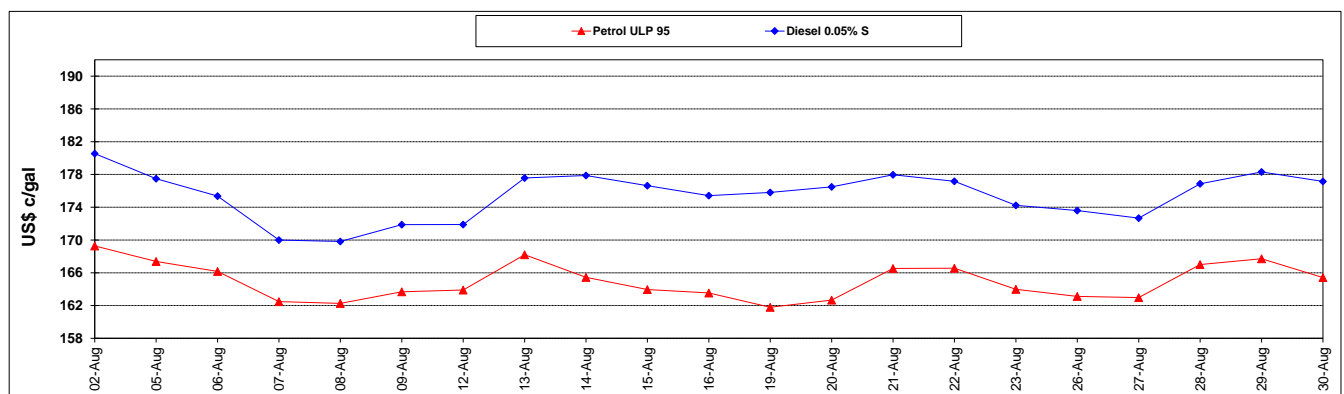
	PETROL 95	PETROL 93	DIESEL 0.05%	DIESEL 0.005%	ILL. PAR.
- MOVEMENT IN INTERNATIONAL PRODUCT PRICES	(11.016)	1.741	(35.161)	(34.086)	(27.875)
- MOVEMENT IN EXCHANGE RATE	(2.696)	(2.609)	(2.890)	(2.903)	(2.903)
AVERAGE UNIT OVER/(UNDER) RECOVERY 30/08/2019 - 30/08/2019	(13.712)	(0.868)	(38.051)	(36.989)	(30.778)

R/\$ EXCHANGE RATE - (R/\$15.2310 - 30/08/2019)

EXCHANGE RATE USED IN BASIC FUEL PRICE



INTERNATIONAL PRODUCT PRICES OF BASKET USED IN BASIC FUEL PRICE



BASIC FUEL PRICE IN SA CENTS PER LITRE

