

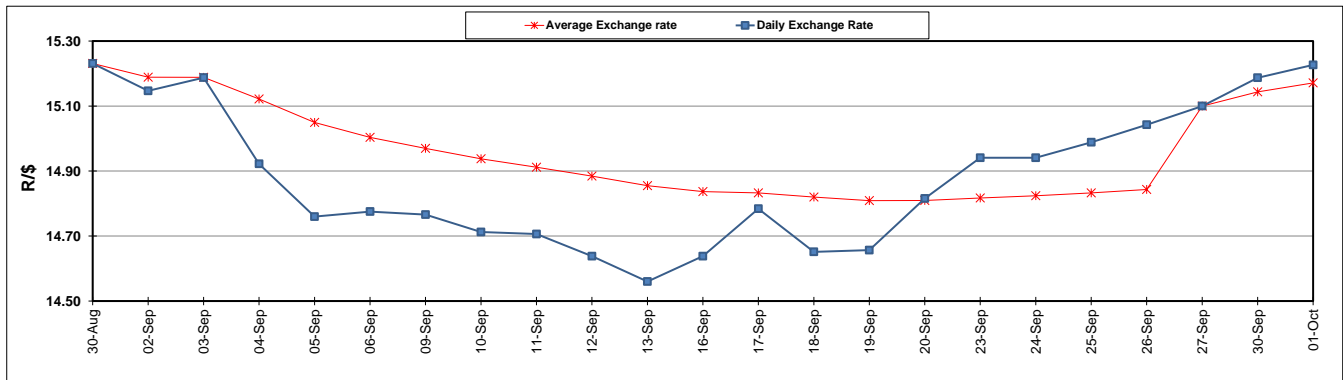
	PETROL 95 ULP	PETROL 93 ULP & LRP	DIESEL 0.05%	DIESEL 0.005%	ILL. PAR.
GAUTENG PUMP PRICE (SA c/l) AS FROM 02/10/2019	1,621.000	1,579.000	-	-	-
WHOLESALE PRICE (SA c/l) AS FROM 02/10/2019	-	-	1,484.210	1,488.610	961.678
SINGLE NATIONAL MAXIMUM RETAIL PRICE	-	-	-	-	1,228.000
BASIC FUEL PRICE - 01/10/2019 (SA c/l)	721.647	697.072	776.201	781.647	782.590
PRESS RELEASE CONTRIBUTION TO BFP 27/09/2019 - 01/10/2019 (SA c/l)	704.170	694.170	745.630	750.030	754.128
UNIT OVER/(UNDER) RECOVERY - 01/10/2019 (SA c/l)	(17.477)	(2.902)	(30.571)	(31.617)	(28.462)
AVERAGE BASIC FUEL PRICE 27/09/2019 - 01/10/2019	731.070	702.798	783.367	788.334	795.085
AVERAGE UNIT OVER/(UNDER) RECOVERY 27/09/2019 - 01/10/2019	(26.900)	(8.628)	(37.737)	(38.304)	(40.957)

ANALYSIS MOVEMENT OF AVERAGE OVER/(UNDER) RECOVERY

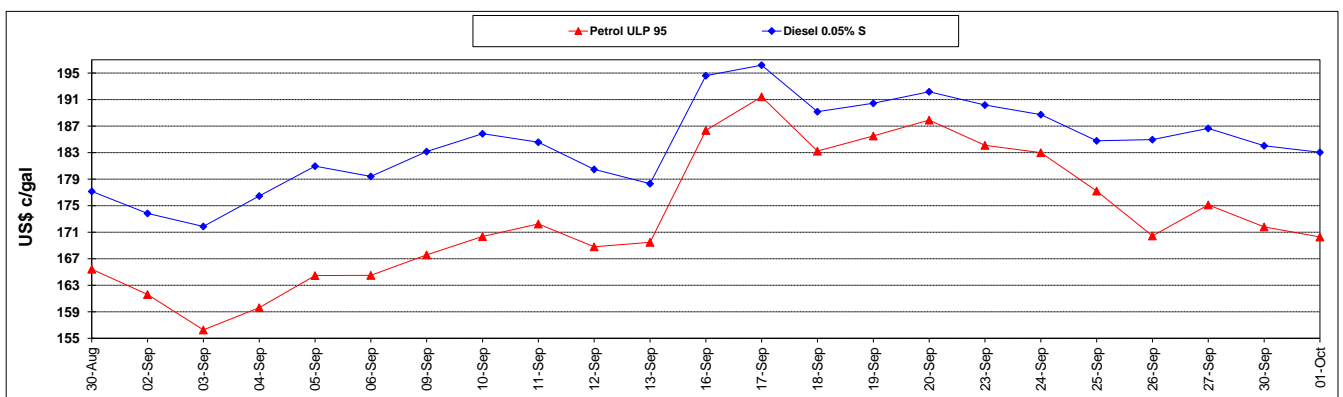
	PETROL 95	PETROL 93	DIESEL 0.05%	DIESEL 0.005%	ILL. PAR.
- MOVEMENT IN INTERNATIONAL PRODUCT PRICES	(11.094)	6.566	(20.801)	(21.260)	(23.767)
- MOVEMENT IN EXCHANGE RATE	(15.806)	(15.194)	(16.936)	(17.044)	(17.190)
AVERAGE UNIT OVER/(UNDER) RECOVERY 27/09/2019 - 01/10/2019	(26.900)	(8.628)	(37.737)	(38.304)	(40.957)

R/\$ EXCHANGE RATE - (R/\$15.2266 - 01/10/2019)

EXCHANGE RATE USED IN BASIC FUEL PRICE



INTERNATIONAL PRODUCT PRICES OF BASKET USED IN BASIC FUEL PRICE



BASIC FUEL PRICE IN SA CENTS PER LITRE

