

	PETROL 95 ULP	PETROL 93 ULP & LRP	DIESEL 0.05%	DIESEL 0.005%	ILL. PAR.
GAUTENG PUMP PRICE (SA c/l) AS FROM 06/11/2019	1,608.000	1,566.000	-	-	-
WHOLESALE PRICE (SA c/l) AS FROM 06/11/2019	-	-	1,468.210	1,474.610	938.678
SINGLE NATIONAL MAXIMUM RETAIL PRICE	-	-	-	-	1,197.000
BASIC FUEL PRICE - 08/11/2019 (SA c/l)	727.158	689.095	729.541	735.116	733.957
PRESS RELEASE CONTRIBUTION TO BFP 06/11/2019 - 08/11/2019 (SA c/l)	709.170	677.170	754.630	761.030	756.128
UNIT OVER/(UNDER) RECOVERY - 08/11/2019 (SA c/l)	(17.988)	(11.925)	25.089	25.914	22.171
AVERAGE BASIC FUEL PRICE 01/11/2019 - 08/11/2019	719.279	684.632	742.156	748.570	743.379
AVERAGE UNIT OVER/(UNDER) RECOVERY 01/11/2019 - 08/11/2019	(3.609)	(0.962)	20.474	19.460	24.249

ANALYSIS MOVEMENT OF AVERAGE OVER/(UNDER) RECOVERY

- MOVEMENT IN INTERNATIONAL PRODUCT PRICES

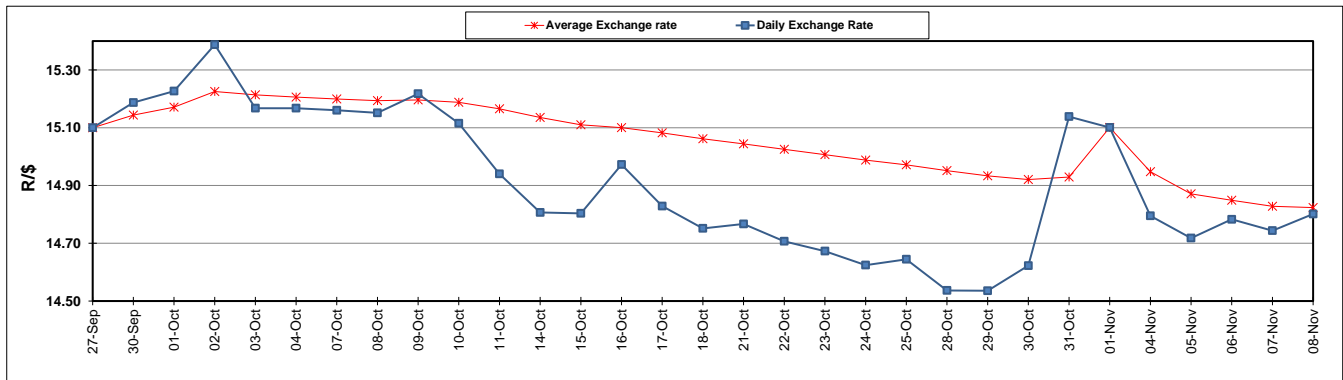
- MOVEMENT IN EXCHANGE RATE

AVERAGE UNIT OVER/(UNDER) RECOVERY 01/11/2019 - 08/11/2019

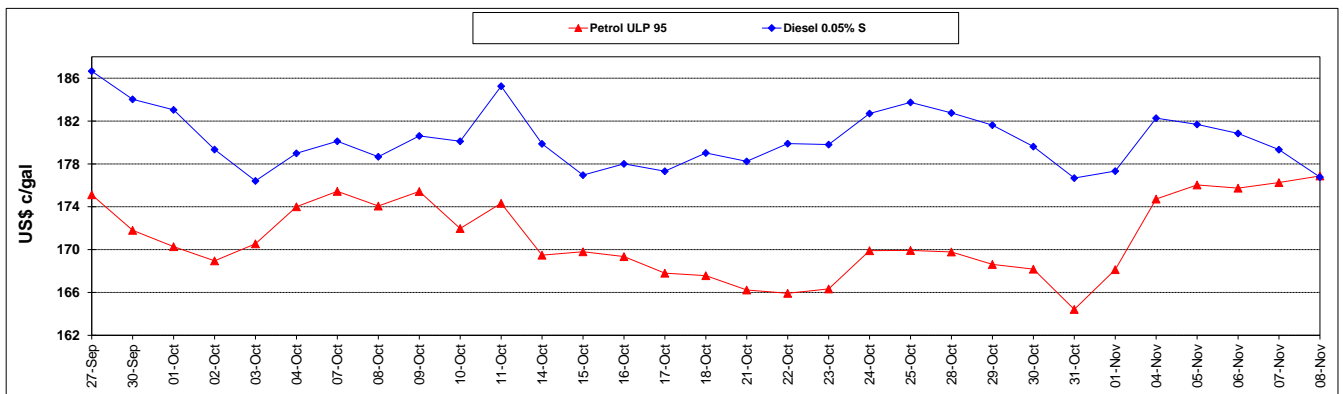
	PETROL 95	PETROL 93	DIESEL 0.05%	DIESEL 0.005%	ILL. PAR.
- MOVEMENT IN INTERNATIONAL PRODUCT PRICES	(8.738)	(5.844)	15.182	14.122	18.948
- MOVEMENT IN EXCHANGE RATE	5.129	4.882	5.292	5.338	5.301
AVERAGE UNIT OVER/(UNDER) RECOVERY 01/11/2019 - 08/11/2019	(3.609)	(0.962)	20.474	19.460	24.249

R/\$ EXCHANGE RATE - (R/\$14.8013 - 08/11/2019)

EXCHANGE RATE USED IN BASIC FUEL PRICE



INTERNATIONAL PRODUCT PRICES OF BASKET USED IN BASIC FUEL PRICE



BASIC FUEL PRICE IN SA CENTS PER LITRE

