

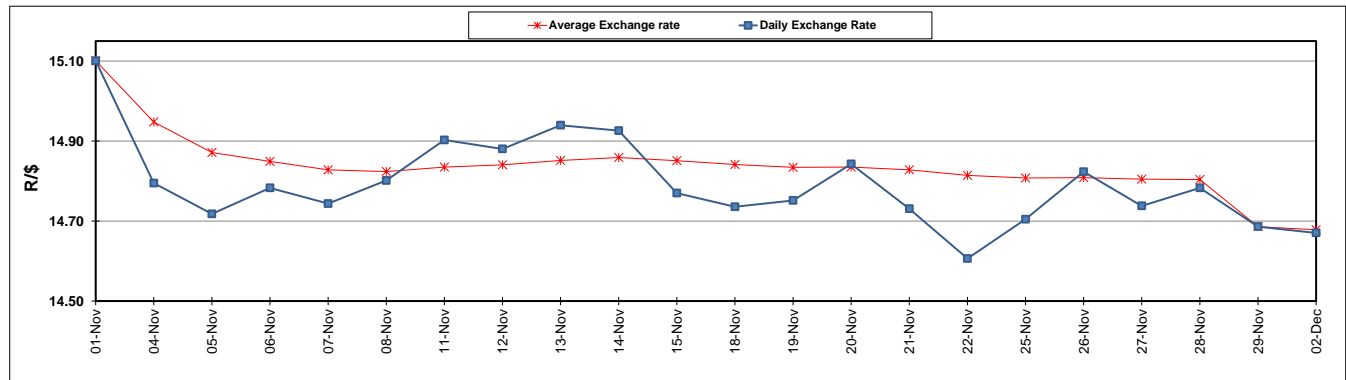
	PETROL 95 ULP	PETROL 93 ULP & LRP	DIESEL 0.05%	DIESEL 0.005%	ILL. PAR.
GAUTENG PUMP PRICE (SA c/l) AS FROM 04/12/2019	1,630.000	1,553.000	-	-	-
WHOLESALE PRICE (SA c/l) AS FROM 04/12/2019	-	-	1,453.260	1,458.660	922.728
SINGLE NATIONAL MAXIMUM RETAIL PRICE	-	-	-	-	1,173.000
BASIC FUEL PRICE - 02/12/2019 (SA c/l)	695.945	671.763	726.694	731.258	721.751
PRESS RELEASE CONTRIBUTION TO BFP 29/11/2019 - 02/12/2019 (SA c/l)	709.170	677.170	754.630	761.030	756.128
UNIT OVER/(UNDER) RECOVERY - 02/12/2019 (SA c/l)	13.225	5.407	27.936	29.772	34.377
AVERAGE BASIC FUEL PRICE 29/11/2019 - 02/12/2019	698.092	673.904	725.239	730.414	721.005
AVERAGE UNIT OVER/(UNDER) RECOVERY 29/11/2019 - 02/12/2019	11.079	3.266	29.391	30.616	35.123

ANALYSIS MOVEMENT OF AVERAGE OVER/(UNDER) RECOVERY

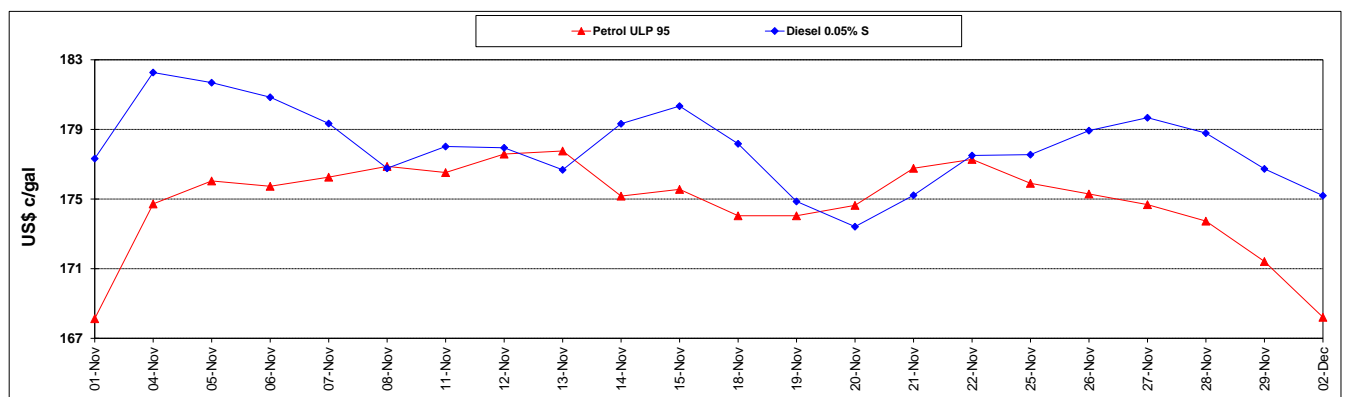
	PETROL 95	PETROL 93	DIESEL 0.05%	DIESEL 0.005%	ILL. PAR.
- MOVEMENT IN INTERNATIONAL PRODUCT PRICES	5.109	(2.496)	23.190	24.371	28.958
- MOVEMENT IN EXCHANGE RATE	5.969	5.762	6.201	6.245	6.165
AVERAGE UNIT OVER/(UNDER) RECOVERY 29/11/2019 - 02/12/2019	11.079	3.266	29.391	30.616	35.123

R/\$ EXCHANGE RATE - (R/\$14.6703 - 02/12/2019)

EXCHANGE RATE USED IN BASIC FUEL PRICE



INTERNATIONAL PRODUCT PRICES OF BASKET USED IN BASIC FUEL PRICE



BASIC FUEL PRICE IN SA CENTS PER LITRE

