

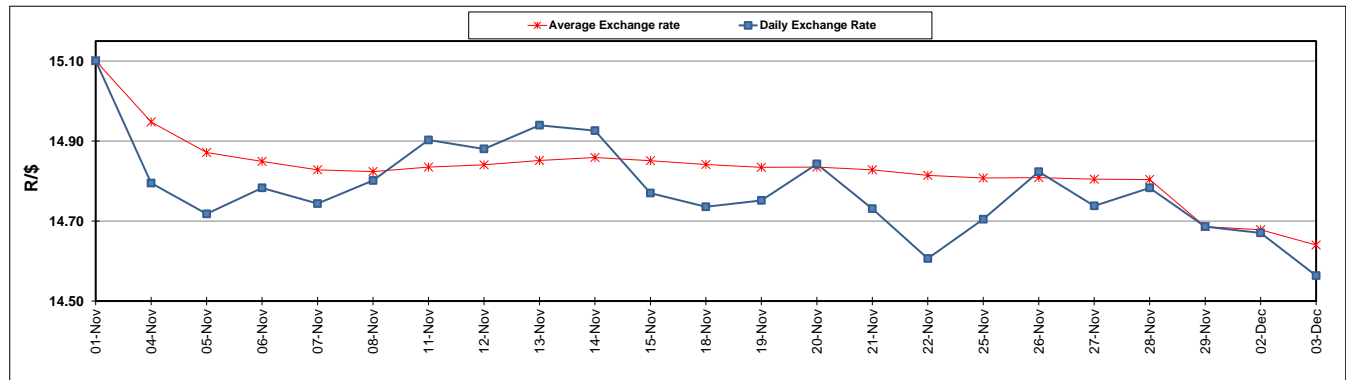
	PETROL 95 ULP	PETROL 93 ULP & LRP	DIESEL 0.05%	DIESEL 0.005%	ILL. PAR.
GAUTENG PUMP PRICE (SA c/l) AS FROM 04/12/2019	1,630.000	1,553.000	-	-	-
WHOLESALE PRICE (SA c/l) AS FROM 04/12/2019	-	-	1,453.260	1,458.660	922.728
SINGLE NATIONAL MAXIMUM RETAIL PRICE	-	-	-	-	1,173.000
BASIC FUEL PRICE - 03/12/2019 (SA c/l)	684.868	660.863	721.102	726.058	713.988
PRESS RELEASE CONTRIBUTION TO BFP 29/11/2019 - 03/12/2019 (SA c/l)	709.170	677.170	754.630	761.030	756.128
UNIT OVER/(UNDER) RECOVERY - 03/12/2019 (SA c/l)	24.302	16.307	33.528	34.972	42.140
AVERAGE BASIC FUEL PRICE 29/11/2019 - 03/12/2019	693.684	669.557	723.860	728.962	718.666
AVERAGE UNIT OVER/(UNDER) RECOVERY 29/11/2019 - 03/12/2019	15.486	7.613	30.770	32.068	37.462

ANALYSIS MOVEMENT OF AVERAGE OVER/(UNDER) RECOVERY

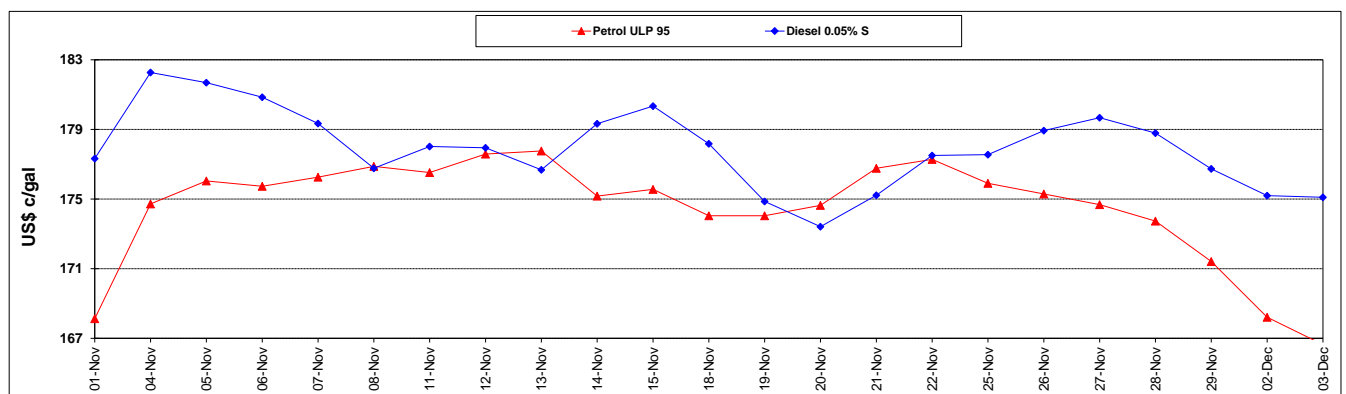
	PETROL 95	PETROL 93	DIESEL 0.05%	DIESEL 0.005%	ILL. PAR.
- MOVEMENT IN INTERNATIONAL PRODUCT PRICES	7.729	0.126	22.676	23.917	29.426
- MOVEMENT IN EXCHANGE RATE	7.757	7.487	8.094	8.151	8.036
AVERAGE UNIT OVER/(UNDER) RECOVERY 29/11/2019 - 03/12/2019	15.486	7.613	30.770	32.068	37.462

R/\$ EXCHANGE RATE - (R/\$14.5635 - 03/12/2019)

EXCHANGE RATE USED IN BASIC FUEL PRICE



INTERNATIONAL PRODUCT PRICES OF BASKET USED IN BASIC FUEL PRICE



BASIC FUEL PRICE IN SA CENTS PER LITRE

