

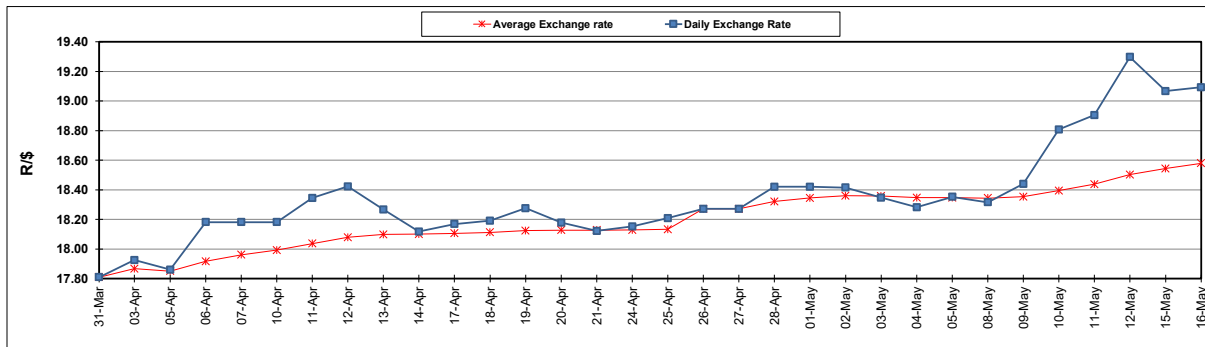
South African Cents per Litre (SA c/l)	PETROL 95 ULP	PETROL 93 ULP & LRP	DIESEL 0.05%	DIESEL 0.005%	ILL. PAR.
GAUTENG PUMP PRICE AS FROM 03/05/2023	2 334.000	2 301.000	-	-	-
WHOLESALE PRICE AS FROM 03/05/2023	-	-	2 015.290	2 049.690	1 439.058
SINGLE NATIONAL MAXIMUM RETAIL PRICE	-	-	-	-	1 859.000
BASIC FUEL PRICE - 16/05/2023	1 213.729	1 178.217	1 164.222	1 198.345	1 201.091
PRESS RELEASE CONTRIBUTION TO BFP 03/05/2023 - 16/05/2023	1 295.970	1 262.970	1 205.630	1 240.030	1 206.128
UNIT OVER/(UNDER) RECOVERY - 16/05/2023	82.241	84.753	41.408	41.685	5.037
AVERAGE BASIC FUEL PRICE 26/04/2023 - 16/05/2023	1 167.484	1 135.563	1 094.768	1 128.456	1 143.057
AVERAGE UNIT OVER/(UNDER) RECOVERY 26/04/2023 - 16/05/2023	110.973	109.894	130.195	122.241	74.071

ANALYSIS MOVEMENT OF AVERAGE OVER/(UNDER) RECOVERY

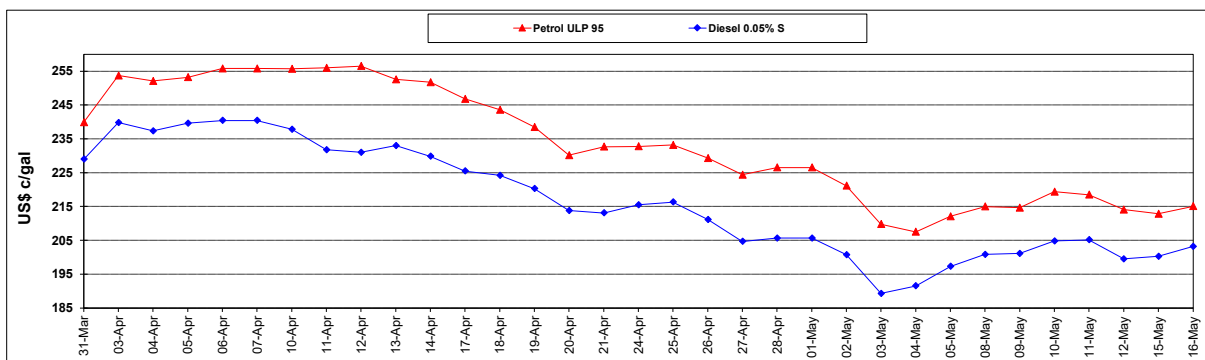
	PETROL 95	PETROL 93	DIESEL 0.05%	DIESEL 0.005%	ILL. PAR.
- MOVEMENT IN INTERNATIONAL PRODUCT PRICES	139.066	137.219	156.539	149.395	101.577
- MOVEMENT IN EXCHANGE RATE	(28.093)	(27.325)	(26.344)	(27.154)	(27.506)
AVERAGE UNIT OVER/(UNDER) RECOVERY 26/04/2023 - 16/05/2023	110.973	109.894	130.195	122.241	74.071

R/\$ EXCHANGE RATE - (R/\$19.0925 - 16/05/2023)

EXCHANGE RATE USED IN BASIC FUEL PRICE



INTERNATIONAL PRODUCT PRICES OF BASKET USED IN BASIC FUEL PRICE



BASIC FUEL PRICE IN SA CENTS PER LITRE

