

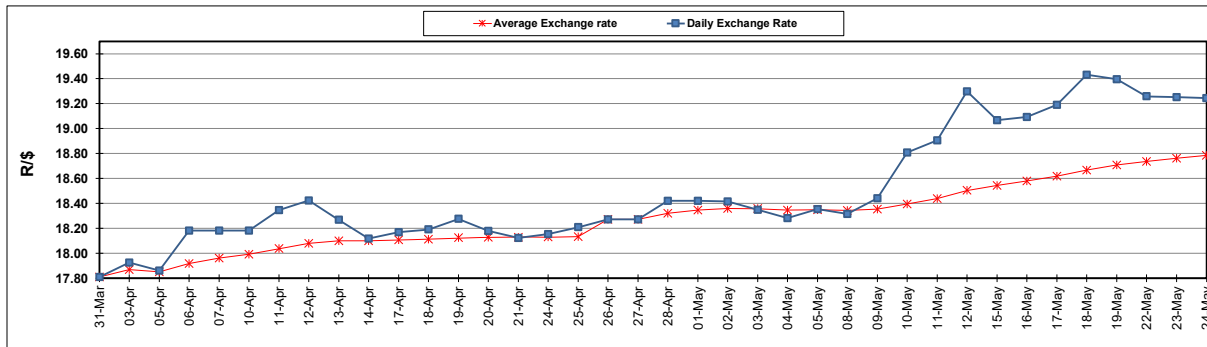
South African Cents per Litre (SA c/l)	PETROL 95 ULP	PETROL 93 ULP & LRP	DIESEL 0.05%	DIESEL 0.005%	ILL. PAR.
GAUTENG PUMP PRICE AS FROM 03/05/2023	2,334.000	2,301.000	-	-	-
WHOLESALE PRICE AS FROM 03/05/2023	-	-	2,015.290	2,049.690	1,439.058
SINGLE NATIONAL MAXIMUM RETAIL PRICE	-	-	-	-	1,859.000
BASIC FUEL PRICE - 24/05/2023	1,289.484	1,251.841	1,176.996	1,210.146	1,200.437
PRESS RELEASE CONTRIBUTION TO BFP 03/05/2023 - 24/05/2023	1,295.970	1,262.970	1,205.630	1,240.030	1,206.128
UNIT OVER/(UNDER) RECOVERY - 24/05/2023	6.486	11.129	28.634	29.884	5.691
AVERAGE BASIC FUEL PRICE 26/04/2023 - 24/05/2023	1,194.086	1,160.594	1,117.193	1,150.656	1,158.986
AVERAGE UNIT OVER/(UNDER) RECOVERY 26/04/2023 - 24/05/2023	89.374	89.866	102.247	96.993	54.999

### ANALYSIS MOVEMENT OF AVERAGE OVER/(UNDER) RECOVERY

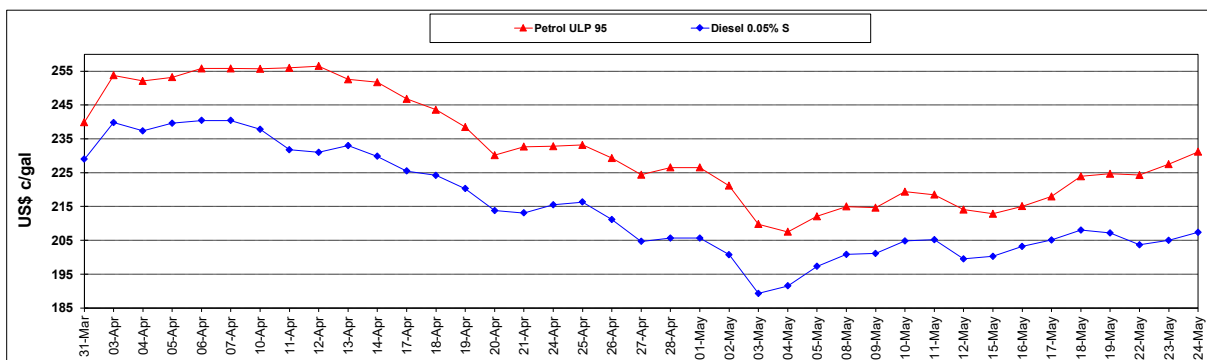
	PETROL 95	PETROL 93	DIESEL 0.05%	DIESEL 0.005%	ILL. PAR.
- MOVEMENT IN INTERNATIONAL PRODUCT PRICES	130.788	130.118	140.994	136.901	95.196
- MOVEMENT IN EXCHANGE RATE	(41.414)	(40.252)	(38.747)	(39.908)	(40.197)
AVERAGE UNIT OVER/(UNDER) RECOVERY 26/04/2023 - 24/05/2023	89.374	89.866	102.247	96.993	54.999

### R/\$ EXCHANGE RATE - (R/\$19.2445 - 24/05/2023)

#### EXCHANGE RATE USED IN BASIC FUEL PRICE



#### INTERNATIONAL PRODUCT PRICES OF BASKET USED IN BASIC FUEL PRICE



#### BASIC FUEL PRICE IN SA CENTS PER LITRE

