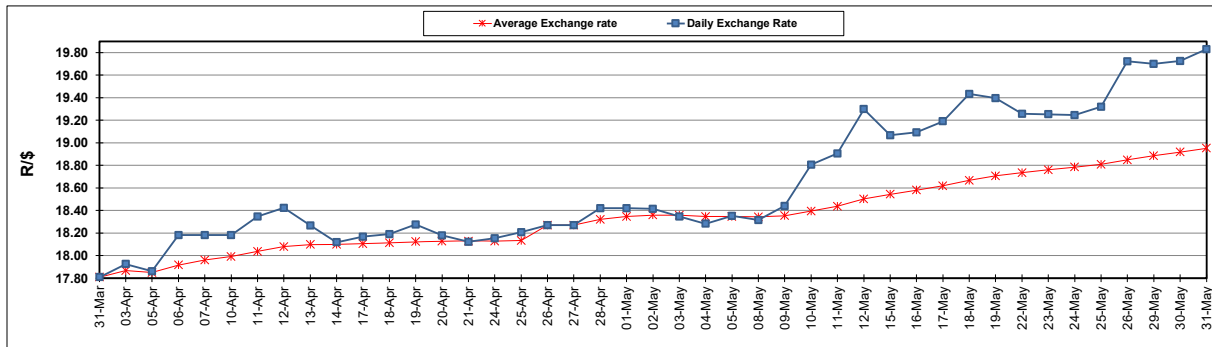


South African Cents per Litre (SA c/l)	PETROL 95 ULP	PETROL 93 ULP & LRP	DIESEL 0.05%	DIESEL 0.005%	ILL. PAR.
GAUTENG PUMP PRICE AS FROM 03/05/2023	2,334.000	2,301.000	-	-	-
WHOLESALE PRICE AS FROM 03/05/2023	-	-	2,015.290	2,049.690	1,439.058
SINGLE NATIONAL MAXIMUM RETAIL PRICE	-	-	-	-	1,859.000
BASIC FUEL PRICE - 31/05/2023	1,275.236	1,230.480	1,173.421	1,208.311	1,187.706
PRESS RELEASE CONTRIBUTION TO BFP 03/05/2023 - 31/05/2023	1,295.970	1,262.970	1,205.630	1,240.030	1,206.128
UNIT OVER/(UNDER) RECOVERY - 31/05/2023	20.734	32.490	32.209	31.719	18.422
AVERAGE BASIC FUEL PRICE 26/04/2023 - 31/05/2023	1,213.383	1,178.022	1,131.443	1,164.992	1,168.621
AVERAGE UNIT OVER/(UNDER) RECOVERY 26/04/2023 - 31/05/2023	72.483	74.844	85.341	81.192	43.853

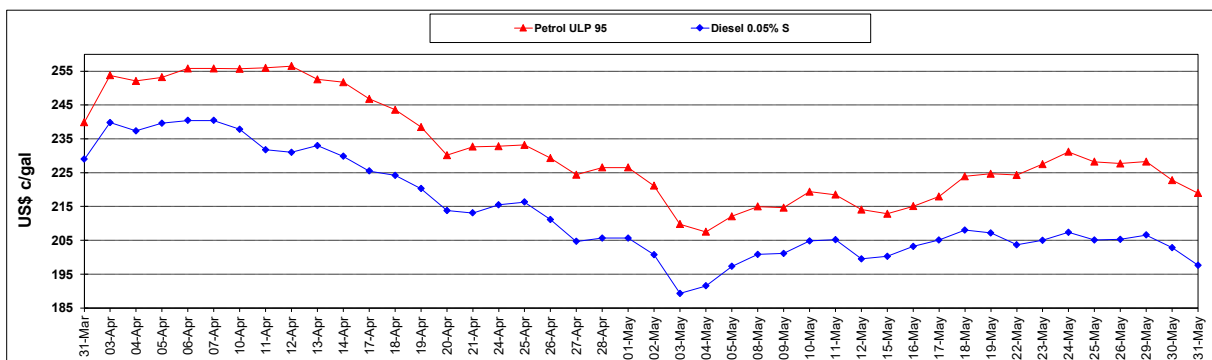
ANALYSIS MOVEMENT OF AVERAGE OVER/(UNDER) RECOVERY					
	PETROL 95	PETROL 93	DIESEL 0.05%	DIESEL 0.005%	ILL. PAR.
- MOVEMENT IN INTERNATIONAL PRODUCT PRICES	124.961	125.793	134.275	131.577	94.395
- MOVEMENT IN EXCHANGE RATE	(52.478)	(50.949)	(48.934)	(50.385)	(50.542)
AVERAGE UNIT OVER/(UNDER) RECOVERY 26/04/2023 - 31/05/2023	72.483	74.844	85.341	81.192	43.853

**R/\$ EXCHANGE RATE - (R/\$19.8298 - 31/05/2023)**

**EXCHANGE RATE USED IN BASIC FUEL PRICE**



**INTERNATIONAL PRODUCT PRICES OF BASKET USED IN BASIC FUEL PRICE**



**BASIC FUEL PRICE IN SA CENTS PER LITRE**

