

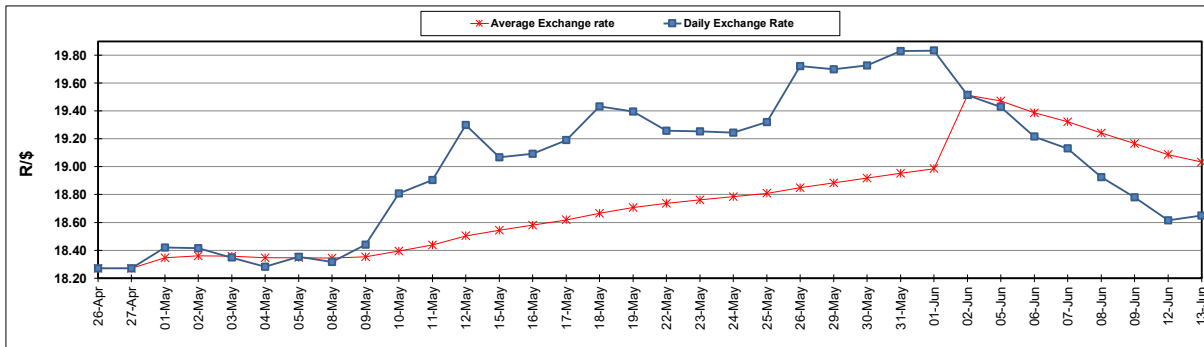
South African Cents per Litre (SA c/l)	PETROL 95 ULP	PETROL 93 ULP & LRP	DIESEL 0.05%	DIESEL 0.005%	ILL. PAR.
GAUTENG PUMP PRICE AS FROM 07/06/2023	2,263.000	2,230.000	-	-	-
WHOLESALE PRICE AS FROM 07/06/2023	-	-	1,931.290	1,969.690	1,396.058
SINGLE NATIONAL MAXIMUM RETAIL PRICE	-	-	-	-	1,801.000
BASIC FUEL PRICE - 13/06/2023	1,201.932	1,163.384	1,132.466	1,159.453	1,140.426
PRESS RELEASE CONTRIBUTION TO BFP 07/06/2023 - 13/06/2023	1,225.970	1,192.970	1,122.630	1,161.030	1,163.128
UNIT OVER/(UNDER) RECOVERY - 13/06/2023	24.038	29.586	(9.836)	1.577	22.702
AVERAGE BASIC FUEL PRICE 02/06/2023 - 13/06/2023	1,247.762	1,206.396	1,160.266	1,190.604	1,173.737
AVERAGE UNIT OVER/(UNDER) RECOVERY 02/06/2023 - 13/06/2023	4.458	12.824	(6.511)	0.051	5.516

ANALYSIS MOVEMENT OF AVERAGE OVER/(UNDER) RECOVERY

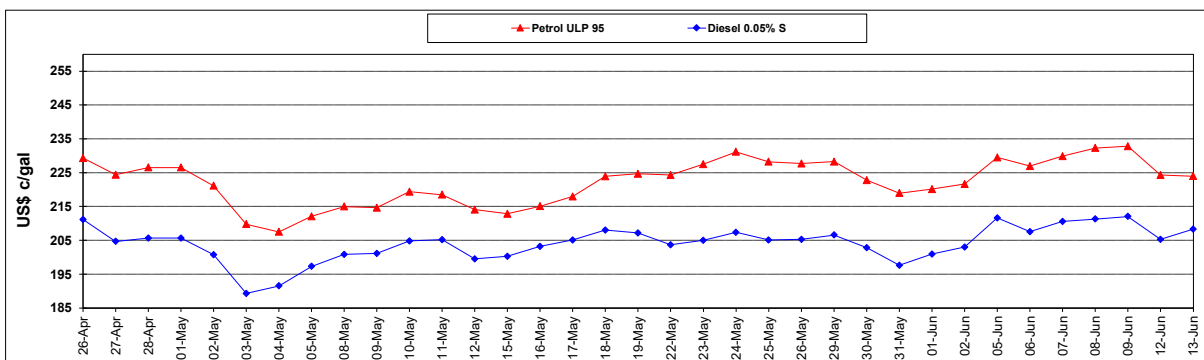
	PETROL 95	PETROL 93	DIESEL 0.05%	DIESEL 0.005%	ILL. PAR.
- MOVEMENT IN INTERNATIONAL PRODUCT PRICES	7.513	15.778	(3.670)	2.966	8.390
- MOVEMENT IN EXCHANGE RATE	(3.055)	(2.954)	(2.841)	(2.915)	(2.874)
AVERAGE UNIT OVER/(UNDER) RECOVERY 02/06/2023 - 13/06/2023	4.458	12.824	(6.511)	0.051	5.516

R/\$ EXCHANGE RATE - (R/\$18.6500- 13/06/2023)

EXCHANGE RATE USED IN BASIC FUEL PRICE



INTERNATIONAL PRODUCT PRICES OF BASKET USED IN BASIC FUEL PRICE



BASIC FUEL PRICE IN SA CENTS PER LITRE

