

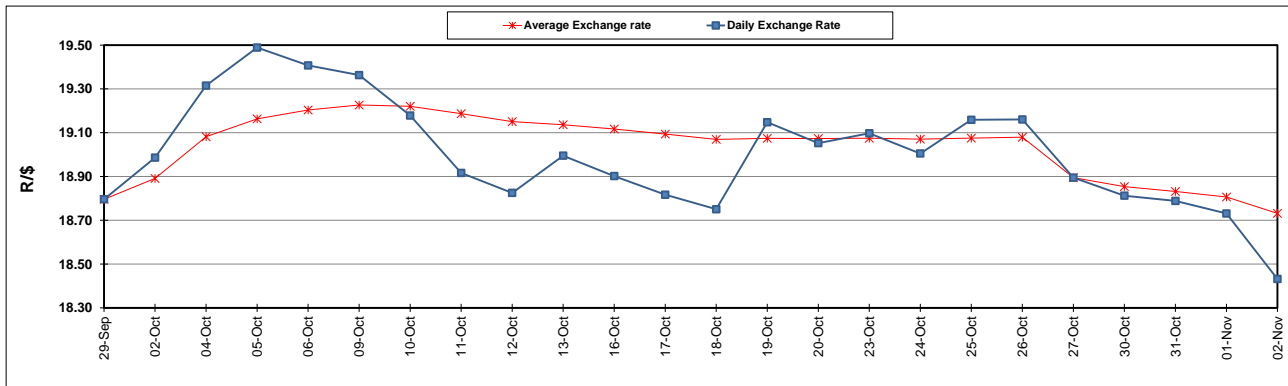
South African Cents per Litre (SA c/l)	PETROL 95 ULP	PETROL 93 ULP & LRP	DIESEL 0.05%	DIESEL 0.005%	ILL. PAR.
GAUTENG PUMP PRICE AS FROM 01/11/2023	2,390.000	2,344.000	-	-	-
WHOLESALE PRICE AS FROM 01/11/2023	-	-	2,416.910	2,440.310	1,795.058
SINGLE NATIONAL MAXIMUM RETAIL PRICE	-	-	-	-	2,333.000
BASIC FUEL PRICE - 02/11/2023	1,228.330	1,188.816	1,419.190	1,434.064	1,450.588
PRESS RELEASE CONTRIBUTION TO BFP 02/11/2023 - 02/11/2023	1,295.350	1,249.350	1,555.630	1,579.030	1,562.128
UNIT OVER/(UNDER) RECOVERY - 02/11/2023	67.020	60.534	136.440	144.966	111.540
AVERAGE BASIC FUEL PRICE 27/10/2023 - 02/11/2023	1,252.709	1,210.173	1,431.863	1,447.712	1,455.542
AVERAGE UNIT OVER/(UNDER) RECOVERY 27/10/2023 - 02/11/2023	162.593	159.128	187.966	193.718	164.786

ANALYSIS MOVEMENT OF AVERAGE OVER/(UNDER) RECOVERY

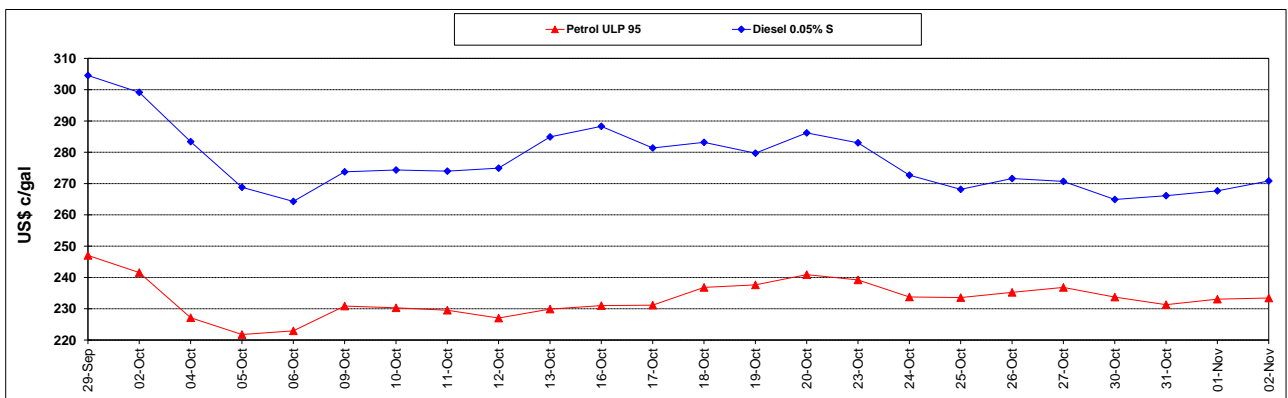
	PETROL 95	PETROL 93	DIESEL 0.05%	DIESEL 0.005%	ILL. PAR.
- MOVEMENT IN INTERNATIONAL PRODUCT PRICES	139.327	136.653	161.373	166.830	137.753
- MOVEMENT IN EXCHANGE RATE	23.266	22.476	26.594	26.888	27.033
AVERAGE UNIT OVER/(UNDER) RECOVERY 27/10/2023 - 02/11/2023	162.593	159.128	187.966	193.718	164.786

R/\$ EXCHANGE RATE - (R/\$18.4320 - 02/11/2023)

EXCHANGE RATE USED IN BASIC FUEL PRICE



INTERNATIONAL PRODUCT PRICES OF BASKET USED IN BASIC FUEL PRICE



BASIC FUEL PRICE IN SA CENTS PER LITRE

