

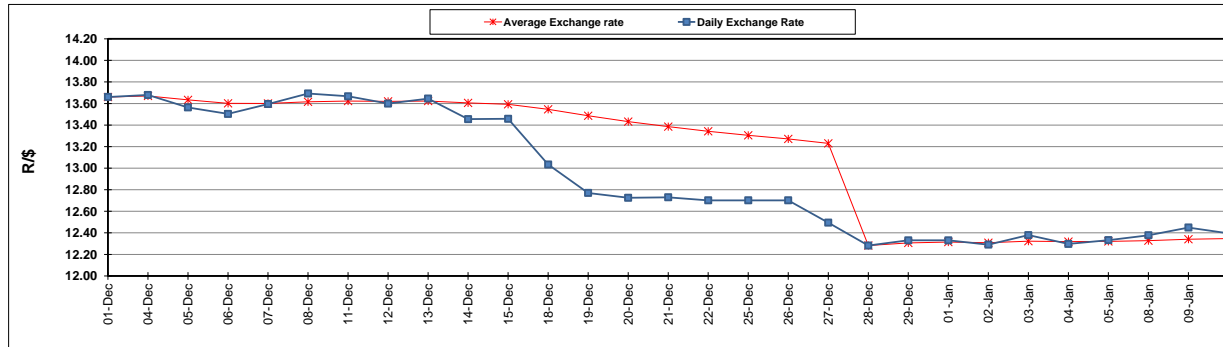
	PETROL 95 ULP	PETROL 93 ULP & LRP	DIESEL 0.05%	DIESEL 0.005%	ILL. PAR.
GAUTENG PUMP PRICE (SA c/l) AS FROM 03/01/2018	1 442.000	1 420.000	-	-	-
WHOLESALE PRICE (SA c/l) AS FROM 03/01/2018	-	-	1 273.630	1 276.030	837.388
SINGLE NATIONAL MAXIMUM RETAIL PRICE	-	-	-	-	1 082.000
BASIC FUEL PRICE - 10/01/2018 (SA c/l)	636.953	627.224	659.983	662.949	661.466
PRESS RELEASE CONTRIBUTION TO BFP 03/01/2018 - 10/01/2018 (SA c/l)	652.170	640.170	662.630	665.030	667.128
UNIT OVER/(UNDER) RECOVERY - 10/01/2018 (SA c/l)	15.217	12.946	2.647	2.081	5.662
AVERAGE BASIC FUEL PRICE 28/12/2017 - 10/01/2018	619.509	609.998	645.903	648.428	648.009
AVERAGE UNIT OVER/(UNDER) RECOVERY 28/12/2017 - 10/01/2018	46.261	41.772	25.528	27.002	30.319

### ANALYSIS MOVEMENT OF AVERAGE OVER/(UNDER) RECOVERY

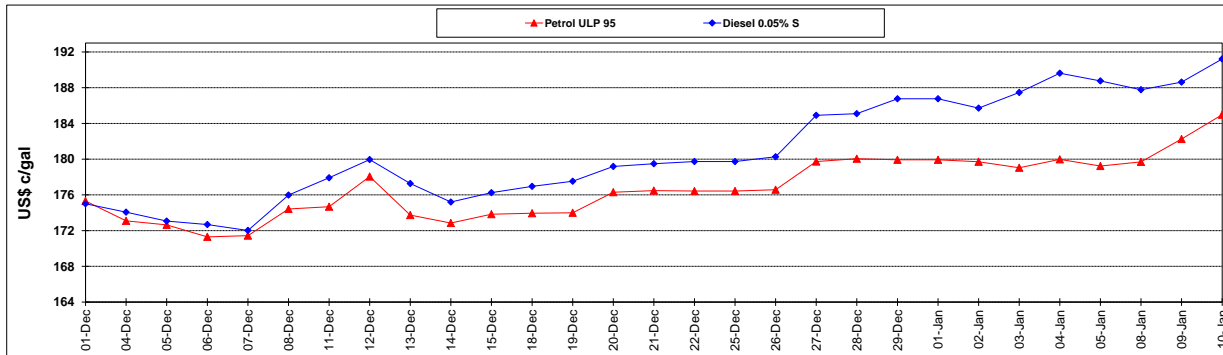
	PETROL 95	PETROL 93	DIESEL 0.05%	DIESEL 0.005%	ILL. PAR.
- MOVEMENT IN INTERNATIONAL PRODUCT PRICES	1.915	(1.894)	(20.709)	(19.414)	(16.067)
- MOVEMENT IN EXCHANGE RATE	44.346	43.666	46.236	46.416	46.386
AVERAGE UNIT OVER/(UNDER) RECOVERY 28/12/2017 - 10/01/2018	46.261	41.772	25.528	27.002	30.319

R/\$ EXCHANGE RATE - (R/\$ 12.3950 - 10/01/2018)

### EXCHANGE RATE USED IN BASIC FUEL PRICE



### INTERNATIONAL PRODUCT PRICES OF BASKET USED IN BASIC FUEL PRICE



### BASIC FUEL PRICE IN SA CENTS PER LITRE

