

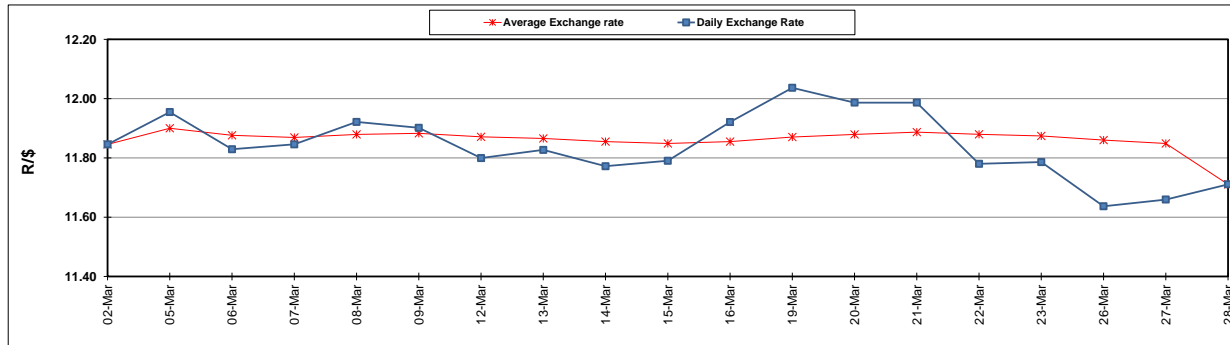
	PETROL 95 ULP	PETROL 93 ULP & LRP	DIESEL 0.05%	DIESEL 0.005%	ILL. PAR.
GAUTENG PUMP PRICE (SA c/l) AS FROM 07/03/2018	1 448.000	1 423.000	-	-	-
WHOLESALE PRICE (SA c/l) AS FROM 07/03/2018	-	-	1 274.830	1 280.230	793.088
SINGLE NATIONAL MAXIMUM RETAIL PRICE	-	-	-	-	1 026.000
BASIC FUEL PRICE - 28/03/2018 (SA c/l)	623.896	609.878	635.299	640.587	642.758
PRESS RELEASE CONTRIBUTION TO BFP 28/03/2018 - 28/03/2018 (SA c/l)	586.170	574.170	598.630	604.030	625.128
UNIT OVER/(UNDER) RECOVERY - 28/03/2018 (SA c/l)	(37.726)	(35.708)	(36.669)	(36.557)	(17.630)
AVERAGE BASIC FUEL PRICE 28/03/2018 - 28/03/2018	623.896	609.878	635.299	640.587	642.758
AVERAGE UNIT OVER/(UNDER) RECOVERY 28/03/2018 - 28/03/2018	(37.726)	(35.708)	(36.669)	(36.557)	(17.630)

ANALYSIS MOVEMENT OF AVERAGE OVER/(UNDER) RECOVERY

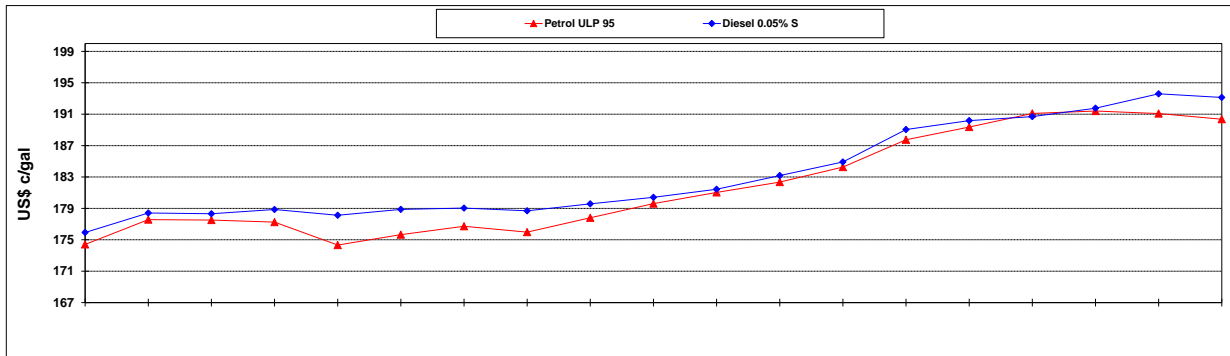
	PETROL 95	PETROL 93	DIESEL 0.05%	DIESEL 0.005%	ILL. PAR.
- MOVEMENT IN INTERNATIONAL PRODUCT PRICES	(45.083)	(42.900)	(44.161)	(44.111)	(25.210)
- MOVEMENT IN EXCHANGE RATE	7.357	7.192	7.492	7.554	7.580
AVERAGE UNIT OVER/(UNDER) RECOVERY 02/03/2018 - 28/03/2018	(37.726)	(35.708)	(36.669)	(36.557)	(17.630)

R/\$ EXCHANGE RATE - (R/\$11.7108 - 28/03/2018)

EXCHANGE RATE USED IN BASIC FUEL PRICE



INTERNATIONAL PRODUCT PRICES OF BASKET USED IN BASIC FUEL PRICE



BASIC FUEL PRICE IN SA CENTS PER LITRE

