

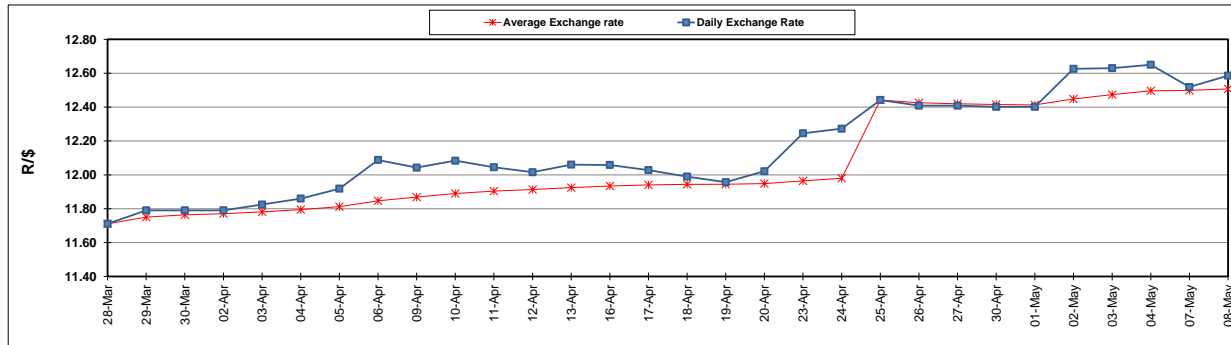
	PETROL 95 ULP	PETROL 93 ULP & LRP	DIESEL 0.05%	DIESEL 0.005%	ILL. PAR.
GAUTENG PUMP PRICE (SA c/l) AS FROM 02/05/2018	1 497.000	1 472.000	-	-	-
WHOLESALE PRICE (SA c/l) AS FROM 02/05/2018	-	-	1 333.830	1 338.230	845.088
SINGLE NATIONAL MAXIMUM RETAIL PRICE	-	-	-	-	1 089.000
BASIC FUEL PRICE - 08/05/2018 (SA c/l)	698.034	687.052	721.023	728.168	731.174
PRESS RELEASE CONTRIBUTION TO BFP 02/05/2018 - 08/05/2018 (SA c/l)	645.070	630.070	660.630	665.030	672.128
UNIT OVER/(UNDER) RECOVERY - 08/05/2018 (SA c/l)	(52.964)	(56.982)	(60.393)	(63.138)	(59.046)
AVERAGE BASIC FUEL PRICE 25/04/2018 - 08/05/2018	693.407	680.038	713.925	719.556	727.431
AVERAGE UNIT OVER/(UNDER) RECOVERY 25/04/2018 - 08/05/2018	(72.837)	(74.468)	(82.795)	(83.526)	(81.303)

ANALYSIS MOVEMENT OF AVERAGE OVER/(UNDER) RECOVERY

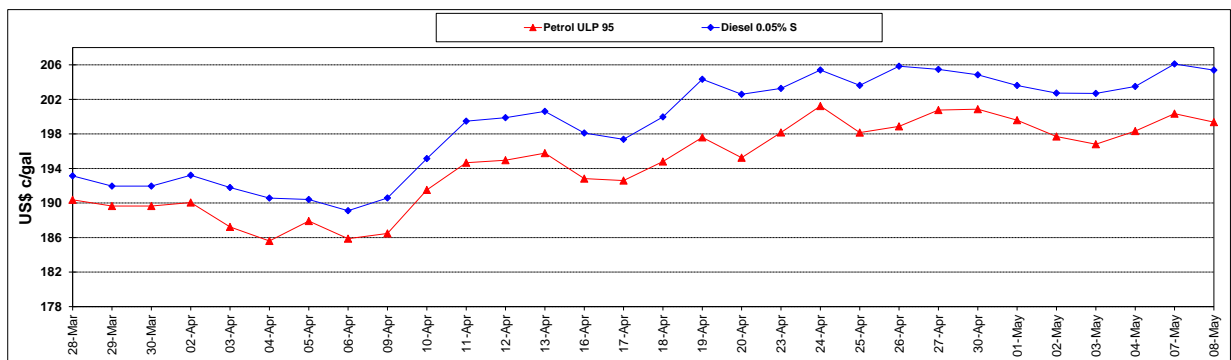
	PETROL 95	PETROL 93	DIESEL 0.05%	DIESEL 0.005%	ILL. PAR.
- MOVEMENT IN INTERNATIONAL PRODUCT PRICES	(43.587)	(45.782)	(52.679)	(53.173)	(50.618)
- MOVEMENT IN EXCHANGE RATE	(29.250)	(28.686)	(30.116)	(30.353)	(30.685)
AVERAGE UNIT OVER/(UNDER) RECOVERY 25/04/2018 - 08/05/2018	(72.837)	(74.468)	(82.795)	(83.526)	(81.303)

R/\$ EXCHANGE RATE - (R/\$12.5858 - 08/05/2018)

EXCHANGE RATE USED IN BASIC FUEL PRICE



INTERNATIONAL PRODUCT PRICES OF BASKET USED IN BASIC FUEL PRICE



BASIC FUEL PRICE IN SA CENTS PER LITRE

