

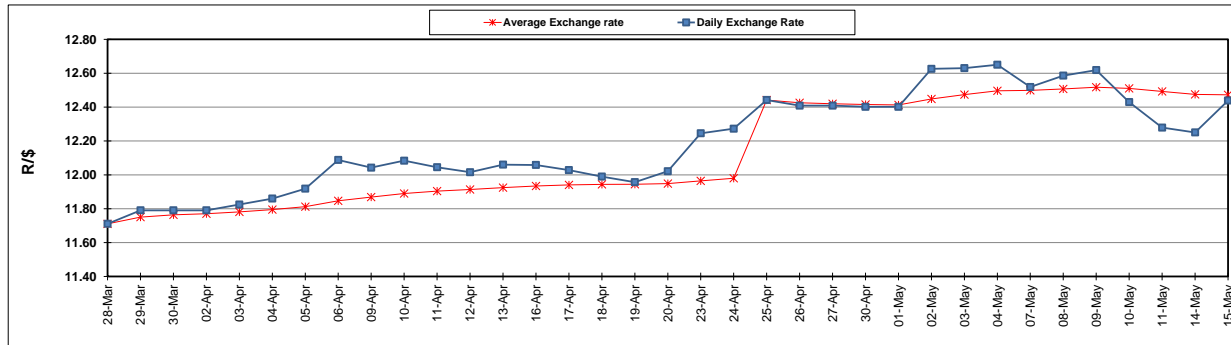
	PETROL 95 ULP	PETROL 93 ULP & LRP	DIESEL 0.05%	DIESEL 0.005%	ILL. PAR.
GAUTENG PUMP PRICE (SA c/l) AS FROM 02/05/2018	1 497.000	1 472.000	-	-	-
WHOLESALE PRICE (SA c/l) AS FROM 02/05/2018	-	-	1 333.830	1 338.230	845.088
SINGLE NATIONAL MAXIMUM RETAIL PRICE	-	-	-	-	1 089.000
BASIC FUEL PRICE - 15/05/2018 (SA c/l)	725.942	713.831	747.143	752.545	753.732
PRESS RELEASE CONTRIBUTION TO BFP 02/05/2018 - 15/05/2018 (SA c/l)	645.070	630.070	660.630	665.030	672.128
UNIT OVER/(UNDER) RECOVERY - 15/05/2018 (SA c/l)	(80.872)	(83.761)	(86.513)	(87.515)	(81.604)
AVERAGE BASIC FUEL PRICE 25/04/2018 - 15/05/2018	700.984	688.069	720.844	726.594	732.495
AVERAGE UNIT OVER/(UNDER) RECOVERY 25/04/2018 - 15/05/2018	(72.247)	(74.332)	(79.881)	(80.898)	(77.700)

### ANALYSIS MOVEMENT OF AVERAGE OVER/(UNDER) RECOVERY

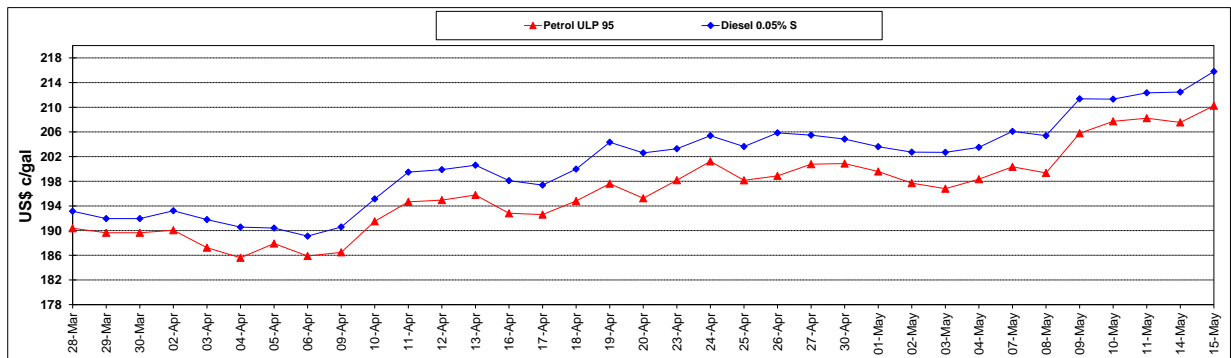
	PETROL 95	PETROL 93	DIESEL 0.05%	DIESEL 0.005%	ILL. PAR.
- MOVEMENT IN INTERNATIONAL PRODUCT PRICES	(44.545)	(47.140)	(51.394)	(52.183)	(48.753)
- MOVEMENT IN EXCHANGE RATE	(27.702)	(27.192)	(28.487)	(28.714)	(28.947)
AVERAGE UNIT OVER/(UNDER) RECOVERY 25/04/2018 - 15/05/2018	(72.247)	(74.332)	(79.881)	(80.898)	(77.700)

### R/\$ EXCHANGE RATE - (R/\$12.4385 - 15/05/2018)

#### EXCHANGE RATE USED IN BASIC FUEL PRICE



#### INTERNATIONAL PRODUCT PRICES OF BASKET USED IN BASIC FUEL PRICE



#### BASIC FUEL PRICE IN SA CENTS PER LITRE

