

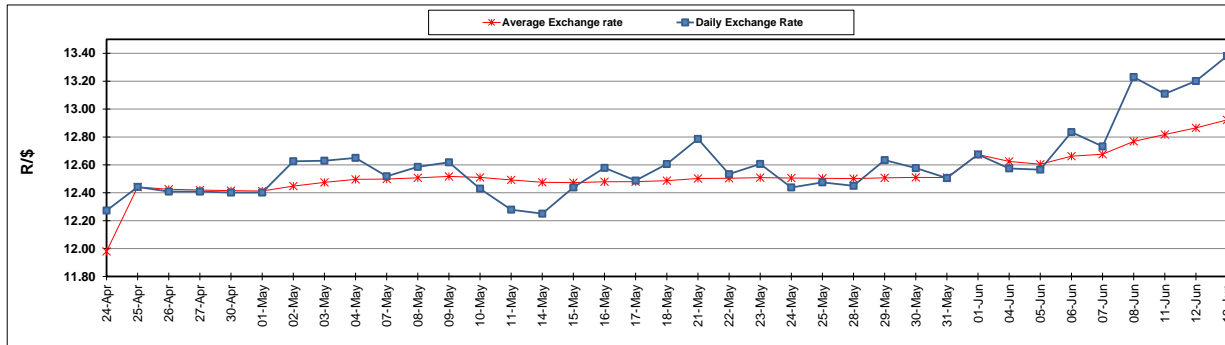
	PETROL 95 ULP	PETROL 93 ULP & LRP	DIESEL 0.05%	DIESEL 0.005%	ILL. PAR.
GAUTENG PUMP PRICE (SA c/l) AS FROM 06/06/2018	1 579.000	1 554.000	-	-	-
WHOLESALE PRICE (SA c/l) AS FROM 06/06/2018	-	-	1 418.830	1 425.230	927.088
SINGLE NATIONAL MAXIMUM RETAIL PRICE	-	-	-	-	1 198.000
BASIC FUEL PRICE - 13/06/2018 (SA c/l)	745.687	735.701	772.625	776.138	773.731
PRESS RELEASE CONTRIBUTION TO BFP 06/06/2018 - 13/06/2018 (SA c/l)	727.070	712.070	745.630	752.030	754.128
UNIT OVER/(UNDER) RECOVERY - 13/06/2018 (SA c/l)	(18.617)	(23.631)	(26.995)	(24.108)	(19.603)
AVERAGE BASIC FUEL PRICE 01/06/2018 - 13/06/2018	731.108	719.012	748.888	753.002	750.840
AVERAGE UNIT OVER/(UNDER) RECOVERY 01/06/2018 - 13/06/2018	(31.371)	(34.275)	(31.591)	(29.972)	(24.046)

### ANALYSIS MOVEMENT OF AVERAGE OVER/(UNDER) RECOVERY

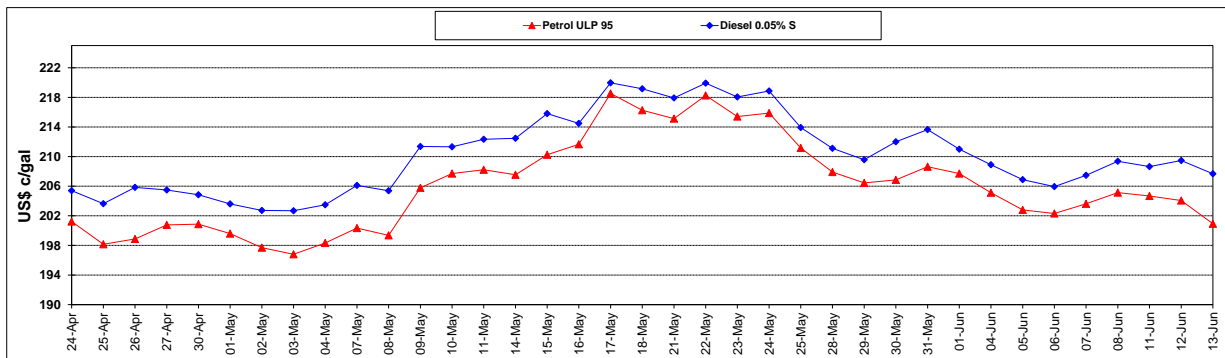
	PETROL 95	PETROL 93	DIESEL 0.05%	DIESEL 0.005%	ILL. PAR.
- MOVEMENT IN INTERNATIONAL PRODUCT PRICES	(8.028)	(11.318)	(7.680)	(5.930)	(0.072)
- MOVEMENT IN EXCHANGE RATE	(23.343)	(22.957)	(23.911)	(24.042)	(23.973)
AVERAGE UNIT OVER/(UNDER) RECOVERY 01/06/2018 - 13/06/2018	(31.371)	(34.275)	(31.591)	(29.972)	(24.046)

### R/\$ EXCHANGE RATE - (R/\$13.3800 - 13/06/2018)

#### EXCHANGE RATE USED IN BASIC FUEL PRICE



#### INTERNATIONAL PRODUCT PRICES OF BASKET USED IN BASIC FUEL PRICE



#### BASIC FUEL PRICE IN SA CENTS PER LITRE

