

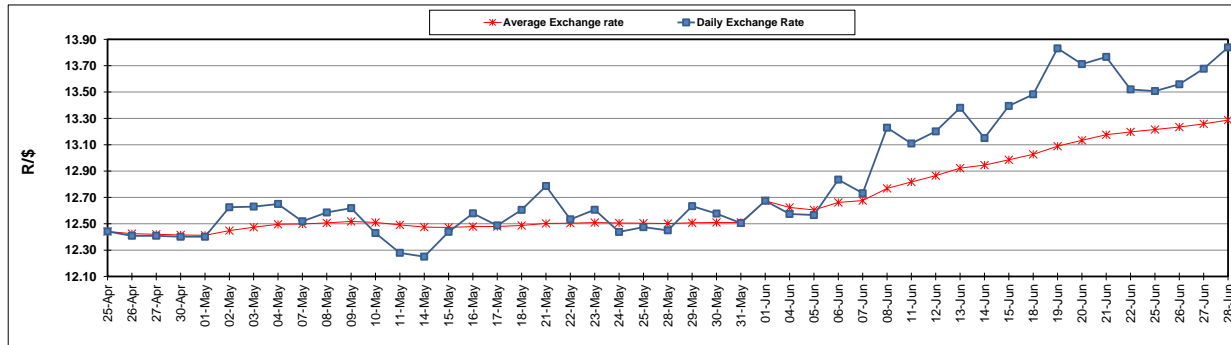
	PETROL 95 ULP	PETROL 93 ULP & LRP	DIESEL 0.05%	DIESEL 0.005%	ILL. PAR.
GAUTENG PUMP PRICE (SA c/l) AS FROM 06/06/2018	1 579.000	1 554.000	-	-	-
WHOLESALE PRICE (SA c/l) AS FROM 06/06/2018	-	-	1 418.830	1 425.230	927.088
SINGLE NATIONAL MAXIMUM RETAIL PRICE	-	-	-	-	1 198.000
BASIC FUEL PRICE - 28/06/2018 (SA c/l)	778.268	767.995	794.947	799.642	803.748
PRESS RELEASE CONTRIBUTION TO BFP 06/06/2018 - 28/06/2018 (SA c/l)	727.070	712.070	745.630	752.030	754.128
UNIT OVER/(UNDER) RECOVERY - 28/06/2018 (SA c/l)	(51.198)	(55.925)	(49.317)	(47.612)	(49.620)
AVERAGE BASIC FUEL PRICE 01/06/2018 - 28/06/2018	738.666	727.286	758.391	762.696	762.845
AVERAGE UNIT OVER/(UNDER) RECOVERY 01/06/2018 - 28/06/2018	(23.896)	(27.516)	(25.511)	(23.716)	(21.017)

ANALYSIS MOVEMENT OF AVERAGE OVER/(UNDER) RECOVERY

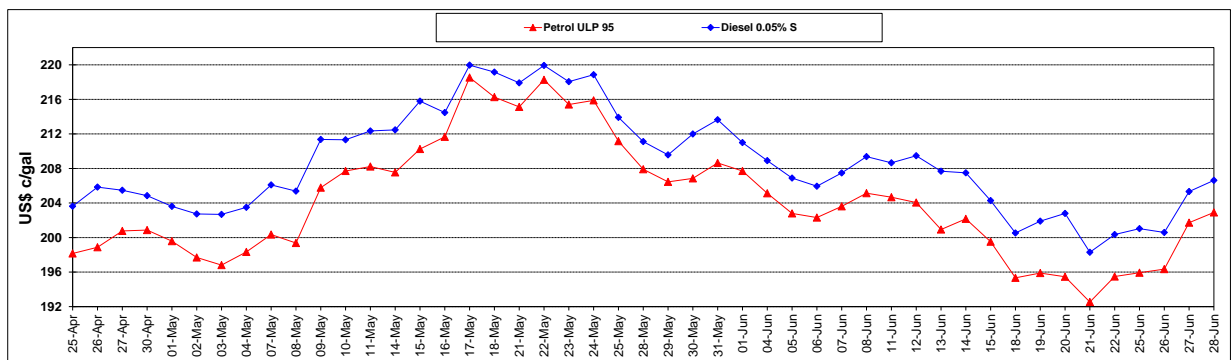
	PETROL 95	PETROL 93	DIESEL 0.05%	DIESEL 0.005%	ILL. PAR.
- MOVEMENT IN INTERNATIONAL PRODUCT PRICES	19.311	15.025	18.849	20.896	23.604
- MOVEMENT IN EXCHANGE RATE	(43.207)	(42.541)	(44.360)	(44.612)	(44.621)
AVERAGE UNIT OVER/(UNDER) RECOVERY 01/06/2018 - 28/06/2018	(23.896)	(27.516)	(25.511)	(23.716)	(21.017)

R/\$ EXCHANGE RATE - (R/\$13.8388 - 28/06/2018)

EXCHANGE RATE USED IN BASIC FUEL PRICE



INTERNATIONAL PRODUCT PRICES OF BASKET USED IN BASIC FUEL PRICE



BASIC FUEL PRICE IN SA CENTS PER LITRE

