

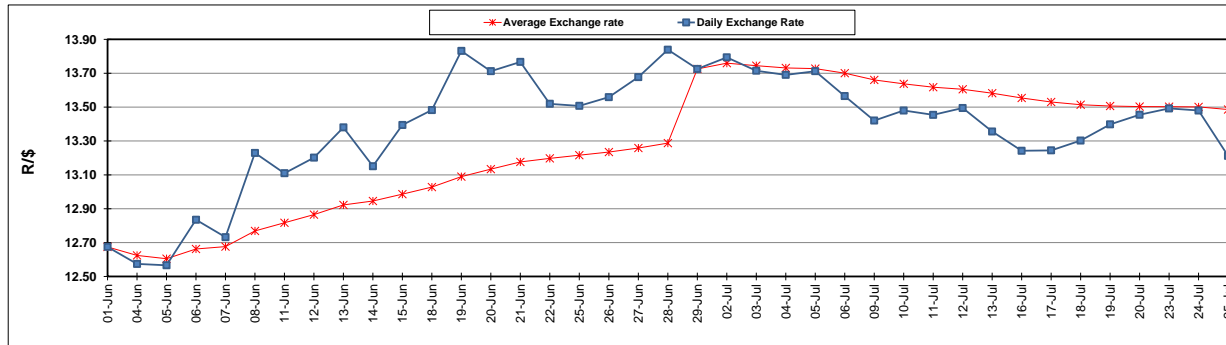
	PETROL 95 ULP	PETROL 93 ULP & LRP	DIESEL 0.05%	DIESEL 0.005%	ILL. PAR.
GAUTENG PUMP PRICE (SA c/l) AS FROM 04/07/2018	1 602.000	1 581.000	-	-	-
WHOLESALE PRICE (SA c/l) AS FROM 04/07/2018	-	-	1 444.830	1 449.230	949.088
SINGLE NATIONAL MAXIMUM RETAIL PRICE	-	-	-	-	1 228.000
BASIC FUEL PRICE - 25/07/2018 (SA c/l)	743.837	730.747	751.564	755.967	761.799
PRESS RELEASE CONTRIBUTION TO BFP 04/07/2018 - 25/07/2018 (SA c/l)	750.070	738.070	771.630	776.030	776.128
UNIT OVER/(UNDER) RECOVERY - 25/07/2018 (SA c/l)	6.233	7.323	20.066	20.063	14.329
AVERAGE BASIC FUEL PRICE 29/06/2018 - 25/07/2018	747.451	736.374	763.077	768.249	776.505
AVERAGE UNIT OVER/(UNDER) RECOVERY 29/06/2018 - 25/07/2018	(1.012)	(2.409)	4.447	3.991	(3.851)

ANALYSIS MOVEMENT OF AVERAGE OVER/(UNDER) RECOVERY

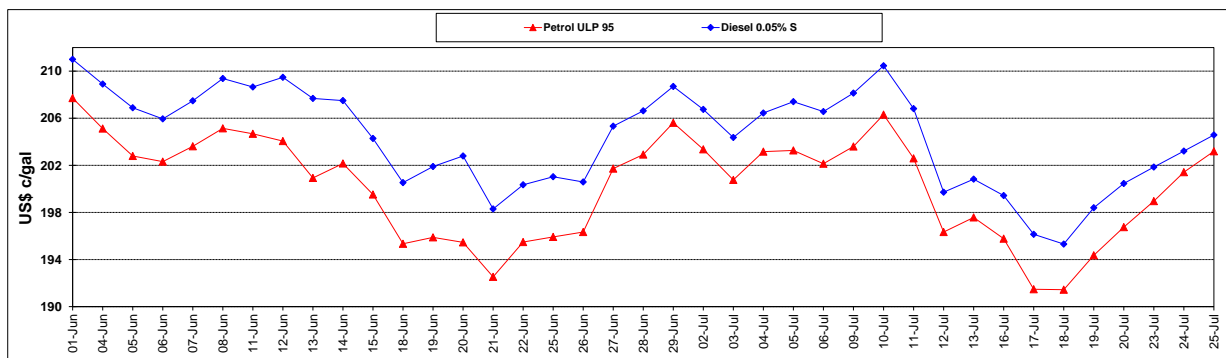
	PETROL 95	PETROL 93	DIESEL 0.05%	DIESEL 0.005%	ILL. PAR.
- MOVEMENT IN INTERNATIONAL PRODUCT PRICES	10.005	8.446	15.697	15.317	7.596
- MOVEMENT IN EXCHANGE RATE	(11.018)	(10.855)	(11.249)	(11.325)	(11.447)
AVERAGE UNIT OVER/(UNDER) RECOVERY 29/06/2018 - 25/07/2018	(1.012)	(2.409)	4.447	3.991	(3.851)

R/\$ EXCHANGE RATE - (R/\$13.212 - 25/07/2018)

EXCHANGE RATE USED IN BASIC FUEL PRICE



INTERNATIONAL PRODUCT PRICES OF BASKET USED IN BASIC FUEL PRICE



BASIC FUEL PRICE IN SA CENTS PER LITRE

