

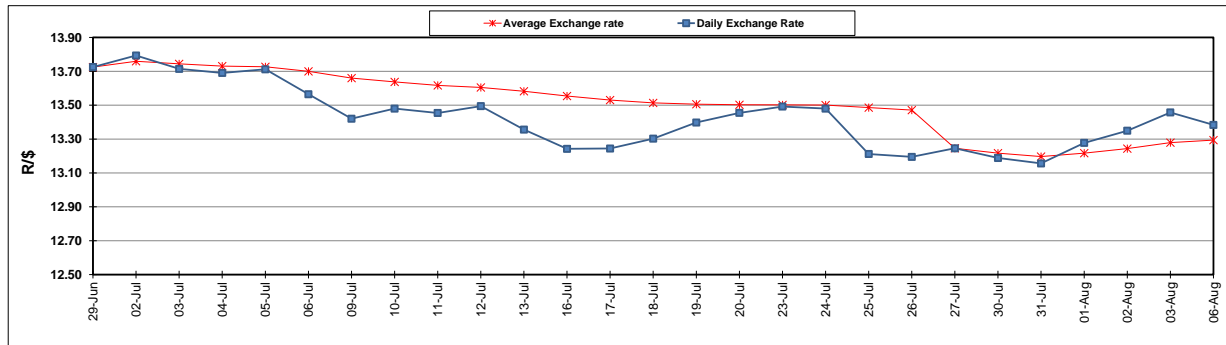
	PETROL 95 ULP	PETROL 93 ULP & LRP	DIESEL 0.05%	DIESEL 0.005%	ILL. PAR.
GAUTENG PUMP PRICE (SA c/l) AS FROM 04/08/2018	1 603.000	1 582.000	-	-	-
WHOLESALE PRICE (SA c/l) AS FROM 04/08/2018	-	-	1 440.830	1 445.230	953.088
SINGLE NATIONAL MAXIMUM RETAIL PRICE	-	-	-	-	1 233.000
BASIC FUEL PRICE - 06/08/2018 (SA c/l)	744.270	731.631	761.444	765.324	767.847
PRESS RELEASE CONTRIBUTION TO BFP 01/08/2018 - 06/08/2018 (SA c/l)	751.070	739.070	767.630	772.030	780.128
UNIT OVER/(UNDER) RECOVERY - 06/08/2018 (SA c/l)	6.800	7.439	6.186	6.706	12.281
AVERAGE BASIC FUEL PRICE 27/07/2018 - 06/08/2018	743.792	731.515	754.651	758.726	763.466
AVERAGE UNIT OVER/(UNDER) RECOVERY 27/06/2018 - 06/08/2018	6.849	7.127	14.693	15.018	14.948

### ANALYSIS MOVEMENT OF AVERAGE OVER/(UNDER) RECOVERY

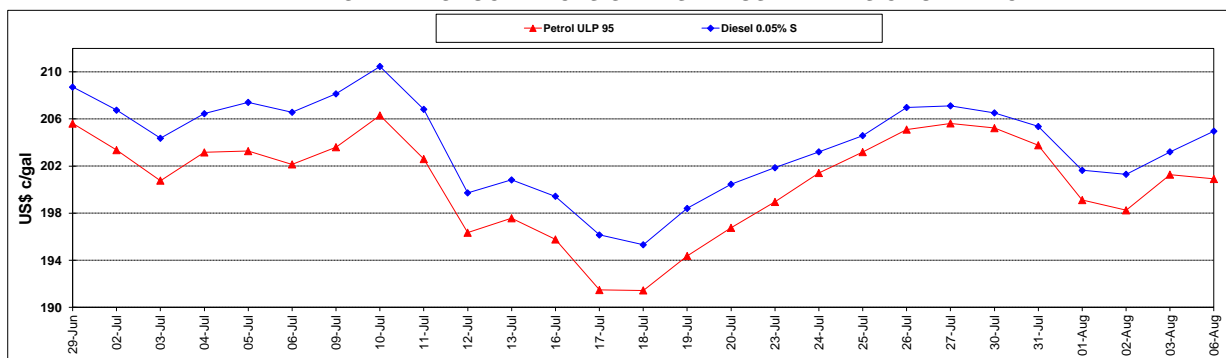
	PETROL 95	PETROL 93	DIESEL 0.05%	DIESEL 0.005%	ILL. PAR.
- MOVEMENT IN INTERNATIONAL PRODUCT PRICES	(3.065)	(2.625)	4.634	4.905	4.772
- MOVEMENT IN EXCHANGE RATE	9.914	9.751	10.059	10.113	10.176
AVERAGE UNIT OVER/(UNDER) RECOVERY 27/07/2018 - 06/08/2018	6.849	7.127	14.693	15.018	14.948

### R/\$ EXCHANGE RATE - (R/\$13.3838 - 06/08/2018)

#### EXCHANGE RATE USED IN BASIC FUEL PRICE



#### INTERNATIONAL PRODUCT PRICES OF BASKET USED IN BASIC FUEL PRICE



#### BASIC FUEL PRICE IN SA CENTS PER LITRE

