

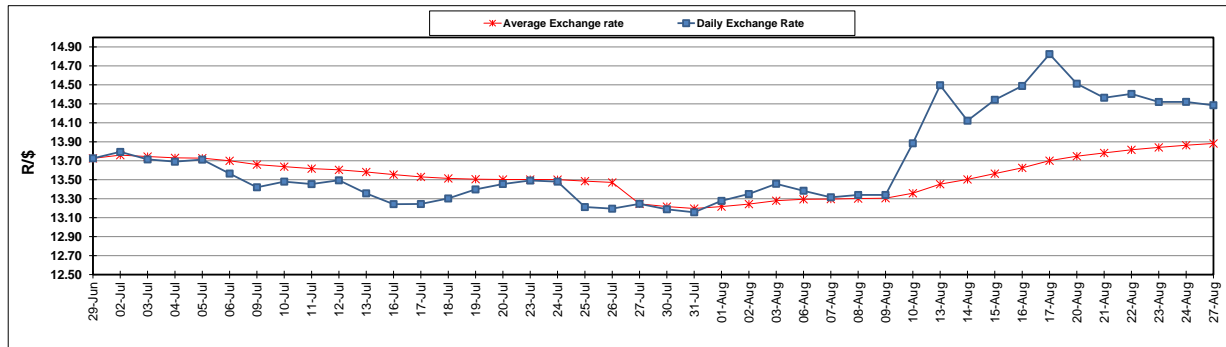
	PETROL 95 ULP	PETROL 93 ULP & LRP	DIESEL 0.05%	DIESEL 0.005%	ILL. PAR.
GAUTENG PUMP PRICE (SA c/l) AS FROM 04/08/2018	1 603.000	1 582.000	-	-	-
WHOLESALE PRICE (SA c/l) AS FROM 04/08/2018	-	-	1 440.830	1 445.230	953.088
SINGLE NATIONAL MAXIMUM RETAIL PRICE	-	-	-	-	1 233.000
BASIC FUEL PRICE - 27/08/2018 (SA c/l)	811.449	798.508	843.517	848.450	835.216
PRESS RELEASE CONTRIBUTION TO BFP 01/08/2018 - 27/08/2018 (SA c/l)	751.070	739.070	767.630	772.030	780.128
UNIT OVER/(UNDER) RECOVERY - 27/08/2018 (SA c/l)	(60.379)	(59.438)	(75.887)	(76.420)	(55.088)
AVERAGE BASIC FUEL PRICE 27/07/2018 - 27/08/2018	772.957	758.827	791.425	795.911	792.677
AVERAGE UNIT OVER/(UNDER) RECOVERY 27/07/2018 - 27/08/2018	(22.023)	(19.894)	(23.250)	(23.335)	(13.095)

### ANALYSIS MOVEMENT OF AVERAGE OVER/(UNDER) RECOVERY

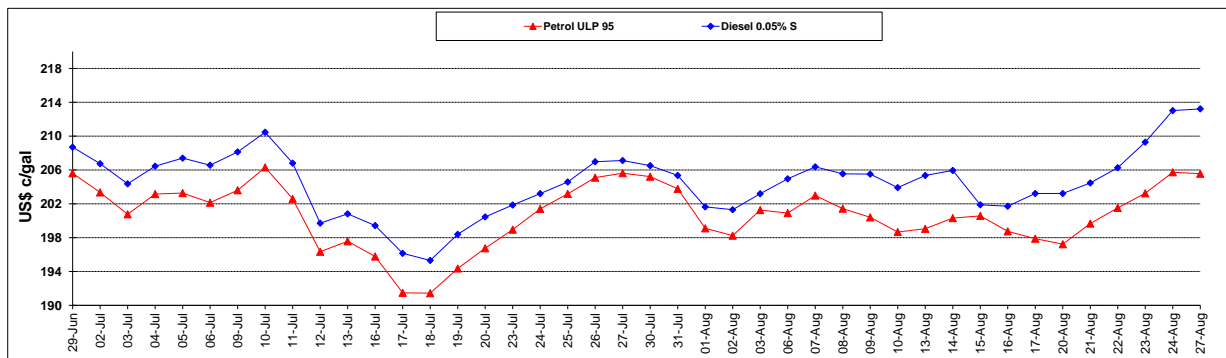
	PETROL 95	PETROL 93	DIESEL 0.05%	DIESEL 0.005%	ILL. PAR.
- MOVEMENT IN INTERNATIONAL PRODUCT PRICES	0.883	2.594	0.203	0.250	10.396
- MOVEMENT IN EXCHANGE RATE	(22.906)	(22.487)	(23.453)	(23.586)	(23.490)
AVERAGE UNIT OVER/(UNDER) RECOVERY 27/07/2018 - 27/08/2018	(22.023)	(19.894)	(23.250)	(23.335)	(13.095)

### R/\$ EXCHANGE RATE - (R/\$14.2850 - 27/08/2018)

#### EXCHANGE RATE USED IN BASIC FUEL PRICE



#### INTERNATIONAL PRODUCT PRICES OF BASKET USED IN BASIC FUEL PRICE



#### BASIC FUEL PRICE IN SA CENTS PER LITRE

