

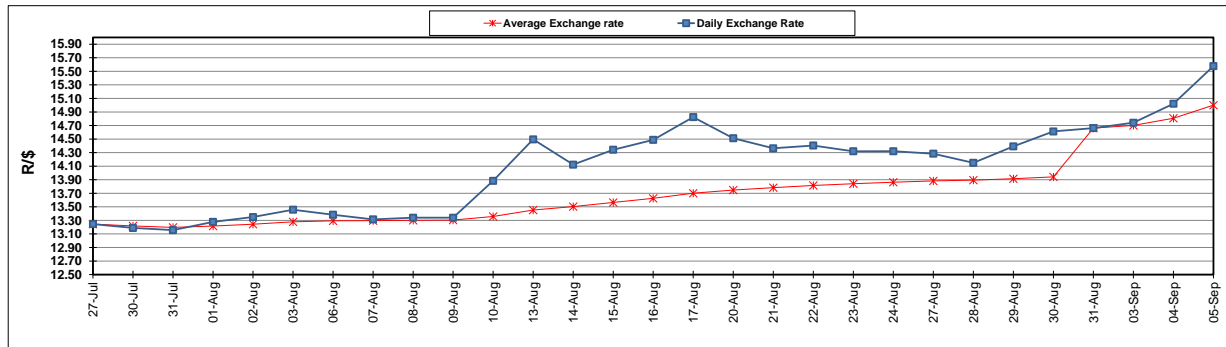
	PETROL 95 ULP	PETROL 93 ULP & LRP	DIESEL 0.05%	DIESEL 0.005%	ILL. PAR.
GAUTENG PUMP PRICE (SA c/l) AS FROM 05/09/2018	1 608.000	1 586.000	-	-	-
WHOLESALE PRICE (SA c/l) AS FROM 05/09/2018	-	-	1 440.830	1 445.230	953.088
SINGLE NATIONAL MAXIMUM RETAIL PRICE	-	-	-	-	1 233.000
BASIC FUEL PRICE - 05/09/2018 (SA c/l)	886.516	872.655	933.331	938.145	924.511
PRESS RELEASE CONTRIBUTION TO BFP 05/09/2018 - 05/09/2018 (SA c/l)	751.170	739.170	767.630	772.030	780.128
UNIT OVER/(UNDER) RECOVERY - 05/09/2018 (SA c/l)	(135.346)	(133.485)	(165.701)	(166.115)	(144.383)
AVERAGE BASIC FUEL PRICE 31/08/2018 - 05/09/2018	865.753	852.256	906.247	911.099	896.098
AVERAGE UNIT OVER/(UNDER) RECOVERY 31/08/2018 - 05/09/2018	(114.658)	(113.161)	(138.617)	(139.069)	(115.970)

### ANALYSIS MOVEMENT OF AVERAGE OVER/(UNDER) RECOVERY

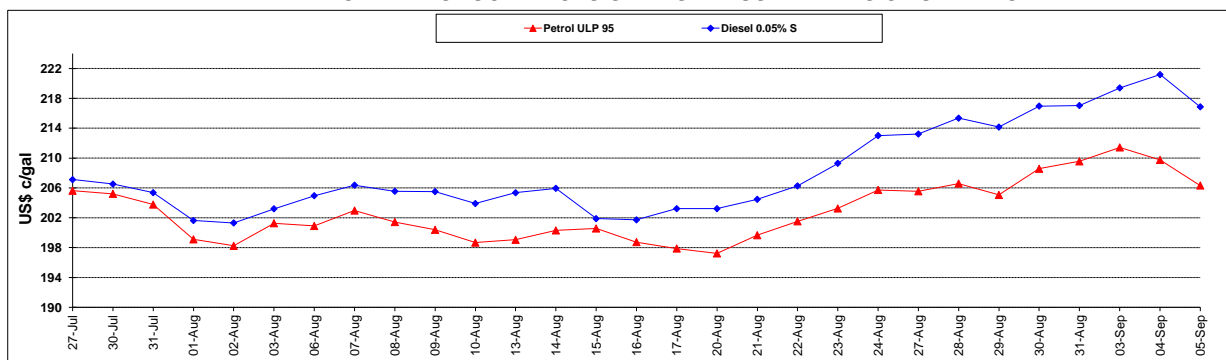
	PETROL 95	PETROL 93	DIESEL 0.05%	DIESEL 0.005%	ILL. PAR.
- MOVEMENT IN INTERNATIONAL PRODUCT PRICES	(53.624)	(53.079)	(74.729)	(74.839)	(52.797)
- MOVEMENT IN EXCHANGE RATE	(61.034)	(60.082)	(63.888)	(64.230)	(63.173)
AVERAGE UNIT OVER/(UNDER) RECOVERY 31/08/2018 - 05/09/2018	(114.658)	(113.161)	(138.617)	(139.069)	(115.970)

### R/\$ EXCHANGE RATE - (R/\$15.5773 - 05/09/2018)

#### EXCHANGE RATE USED IN BASIC FUEL PRICE



#### INTERNATIONAL PRODUCT PRICES OF BASKET USED IN BASIC FUEL PRICE



#### BASIC FUEL PRICE IN SA CENTS PER LITRE

