

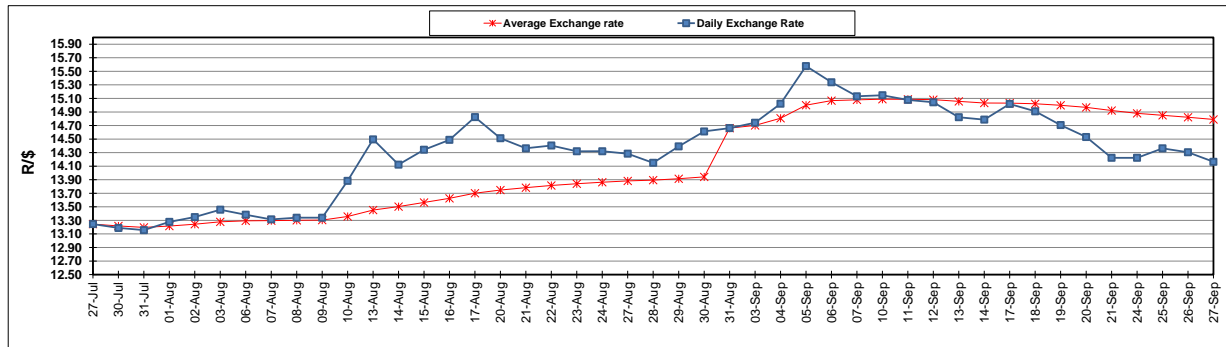
	PETROL 95 ULP	PETROL 93 ULP & LRP	DIESEL 0.05%	DIESEL 0.005%	ILL. PAR.
GAUTENG PUMP PRICE (SA c/l) AS FROM 05/09/2018	1 608.000	1 586.000	-	-	-
WHOLESALE PRICE (SA c/l) AS FROM 05/09/2018	-	-	1 440.830	1 445.230	953.088
SINGLE NATIONAL MAXIMUM RETAIL PRICE	-	-	-	-	1 233.000
BASIC FUEL PRICE - 27/09/2018 (SA c/l)	836.668	825.094	881.426	886.563	872.161
PRESS RELEASE CONTRIBUTION TO BFP 05/09/2018 - 27/09/2018 (SA c/l)	751.170	739.170	767.630	772.030	780.128
UNIT OVER/(UNDER) RECOVERY - 27/09/2018 (SA c/l)	(85.498)	(85.924)	(113.796)	(114.533)	(92.033)
AVERAGE BASIC FUEL PRICE 31/08/2018 - 27/09/2018	850.898	838.341	891.110	895.857	884.055
AVERAGE UNIT OVER/(UNDER) RECOVERY 31/08/2018 - 27/09/2018	(99.743)	(99.186)	(123.480)	(123.827)	(103.927)

### ANALYSIS MOVEMENT OF AVERAGE OVER/(UNDER) RECOVERY

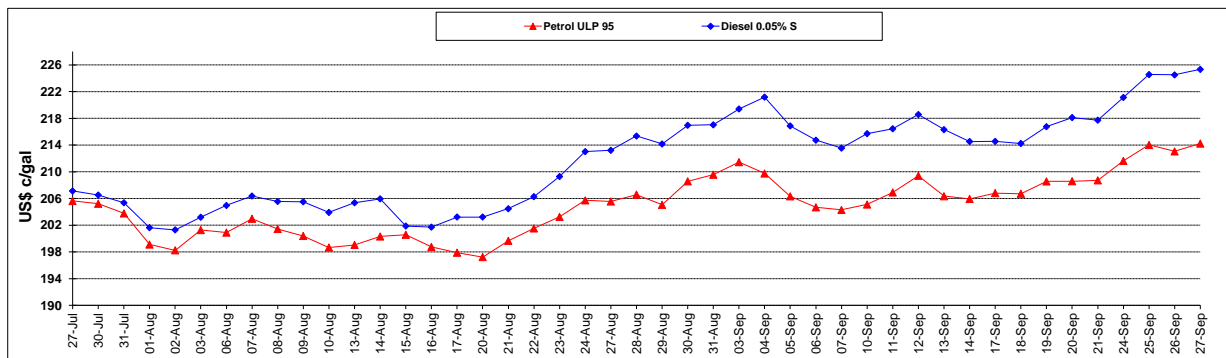
	PETROL 95	PETROL 93	DIESEL 0.05%	DIESEL 0.005%	ILL. PAR.
- MOVEMENT IN INTERNATIONAL PRODUCT PRICES	(51.019)	(51.181)	(72.453)	(72.528)	(53.304)
- MOVEMENT IN EXCHANGE RATE	(48.724)	(48.005)	(51.027)	(51.299)	(50.623)
AVERAGE UNIT OVER/(UNDER) RECOVERY 31/08/2018 - 27/09/2018	(99.743)	(99.186)	(123.480)	(123.827)	(103.927)

### R/\$ EXCHANGE RATE - (R/\$14.1650 - 27/09/2018)

#### EXCHANGE RATE USED IN BASIC FUEL PRICE



#### INTERNATIONAL PRODUCT PRICES OF BASKET USED IN BASIC FUEL PRICE



#### BASIC FUEL PRICE IN SA CENTS PER LITRE

