

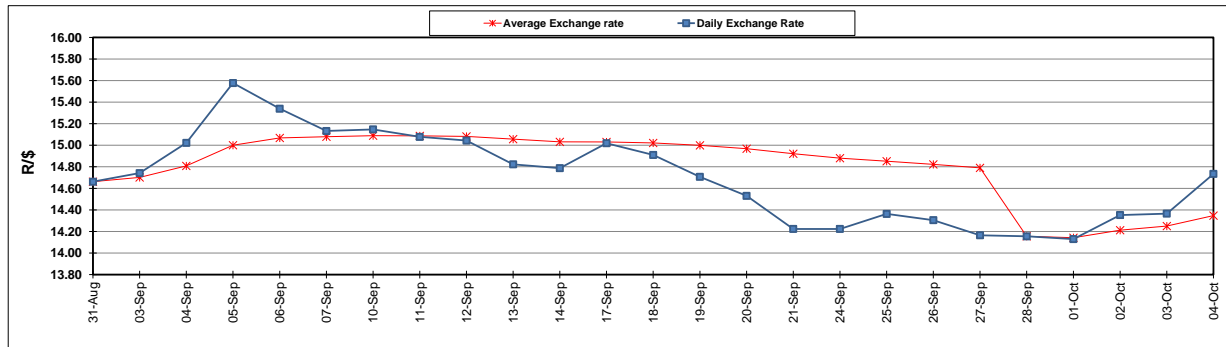
	PETROL 95 ULP	PETROL 93 ULP & LRP	DIESEL 0.05%	DIESEL 0.005%	ILL. PAR.
GAUTENG PUMP PRICE (SA c/l) AS FROM 03/10/2018	1 708.000	1 685.000	-	-	-
WHOLESALE PRICE (SA c/l) AS FROM 03/10/2018	-	-	1 564.830	1 569.230	1 057.088
SINGLE NATIONAL MAXIMUM RETAIL PRICE	-	-	-	-	1 372.000
BASIC FUEL PRICE - 04/10/2018 (SA c/l)	888.053	876.253	951.377	958.804	949.724
PRESS RELEASE CONTRIBUTION TO BFP 03/10/2018 - 04/10/2018 (SA c/l)	851.170	838.170	891.630	896.030	884.128
UNIT OVER/(UNDER) RECOVERY - 04/10/2018 (SA c/l)	(36.883)	(38.083)	(59.747)	(62.774)	(65.596)
AVERAGE BASIC FUEL PRICE 28/09/2018 - 04/10/2018	864.121	851.906	916.726	923.009	909.667
AVERAGE UNIT OVER/(UNDER) RECOVERY 28/09/2018 - 04/10/2018	(72.951)	(73.136)	(99.496)	(101.379)	(87.939)

ANALYSIS MOVEMENT OF AVERAGE OVER/(UNDER) RECOVERY

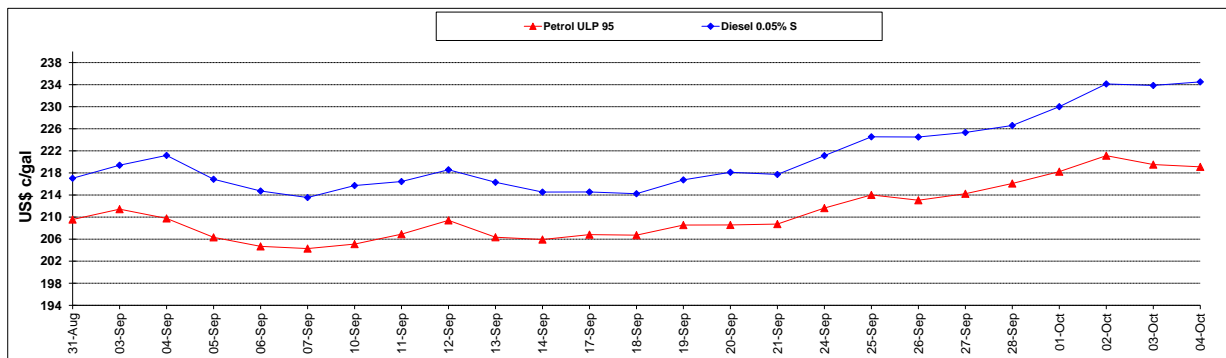
	PETROL 95	PETROL 93	DIESEL 0.05%	DIESEL 0.005%	ILL. PAR.
- MOVEMENT IN INTERNATIONAL PRODUCT PRICES	(99.608)	(99.416)	(127.776)	(129.853)	(116.001)
- MOVEMENT IN EXCHANGE RATE	26.657	26.280	28.280	28.474	28.062
AVERAGE UNIT OVER/(UNDER) RECOVERY 28/09/2018 - 04/10/2018	(72.951)	(73.136)	(99.496)	(101.379)	(87.939)

R/\$ EXCHANGE RATE - (R/\$14.7338 - 04/10/2018)

EXCHANGE RATE USED IN BASIC FUEL PRICE



INTERNATIONAL PRODUCT PRICES OF BASKET USED IN BASIC FUEL PRICE



BASIC FUEL PRICE IN SA CENTS PER LITRE

