

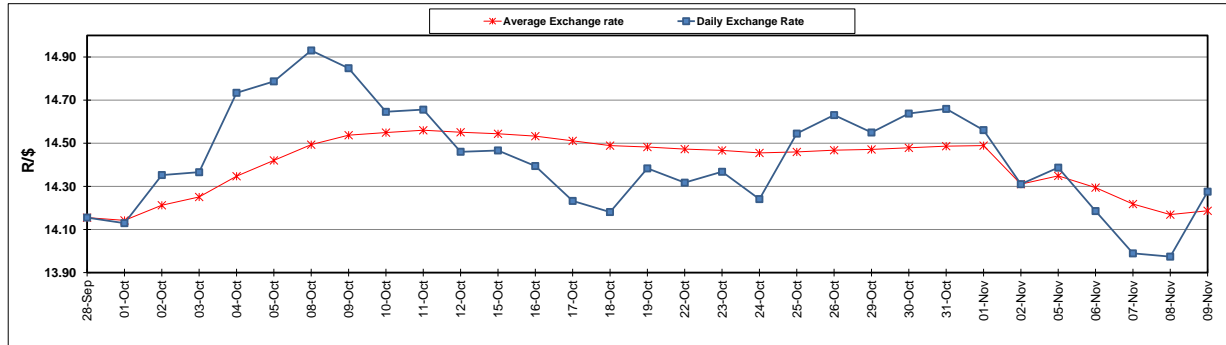
	PETROL 95 ULP	PETROL 93 ULP & LRP	DIESEL 0.05%	DIESEL 0.005%	ILL. PAR.
GAUTENG PUMP PRICE (SA c/l) AS FROM 07/11/2018	1 708.000	1 685.000	-	-	-
WHOLESALE PRICE (SA c/l) AS FROM 07/11/2018	-	-	1 612.750	1 620.150	1 085.088
SINGLE NATIONAL MAXIMUM RETAIL PRICE	-	-	-	-	1 409.000
BASIC FUEL PRICE - 09/11/2018 (SA c/l)	674.143	664.684	811.171	817.212	813.154
PRESS RELEASE CONTRIBUTION TO BFP 07/11/2018 - 09/11/2018 (SA c/l)	829.250	816.250	917.630	925.030	912.128
UNIT OVER/(UNDER) RECOVERY - 09/11/2018 (SA c/l)	155.107	151.566	106.459	107.818	98.974
AVERAGE BASIC FUEL PRICE 02/11/2018 - 09/11/2018	689.831	680.147	820.654	826.613	819.931
AVERAGE UNIT OVER/(UNDER) RECOVERY 02/11/2018 - 09/11/2018	150.380	147.063	83.976	83.917	78.197

ANALYSIS MOVEMENT OF AVERAGE OVER/(UNDER) RECOVERY

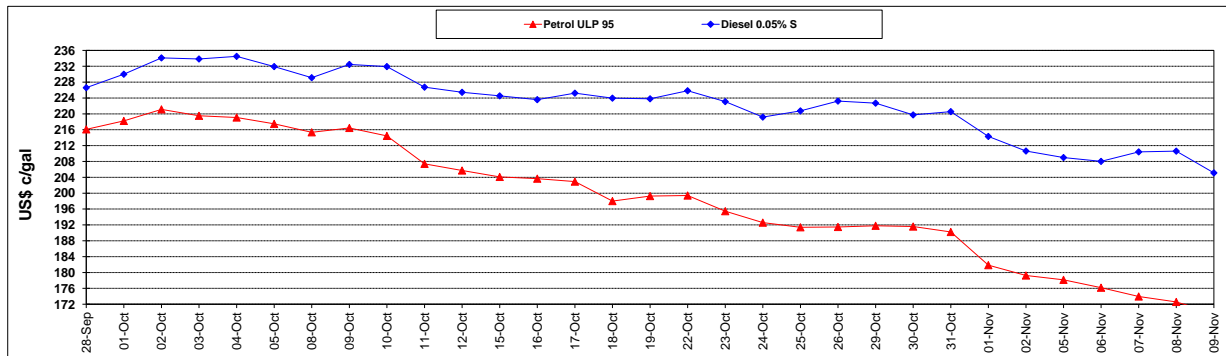
	PETROL 95	PETROL 93	DIESEL 0.05%	DIESEL 0.005%	ILL. PAR.
- MOVEMENT IN INTERNATIONAL PRODUCT PRICES	135.680	132.570	66.489	66.303	60.726
- MOVEMENT IN EXCHANGE RATE	14.699	14.493	17.487	17.614	17.471
AVERAGE UNIT OVER/(UNDER) RECOVERY 02/11/2018 - 09/11/2018	150.379	147.063	83.976	83.917	78.197

R/\$ EXCHANGE RATE - (R/\$14.2755 - 09/11/2018)

EXCHANGE RATE USED IN ULIC FUEL PRICE



INTERNATIONAL PRODUCT PRICES OF BASKET USED IN BASIC FUEL PRICE



BASIC FUEL PRICE IN SA CENTS PER LITRE

