

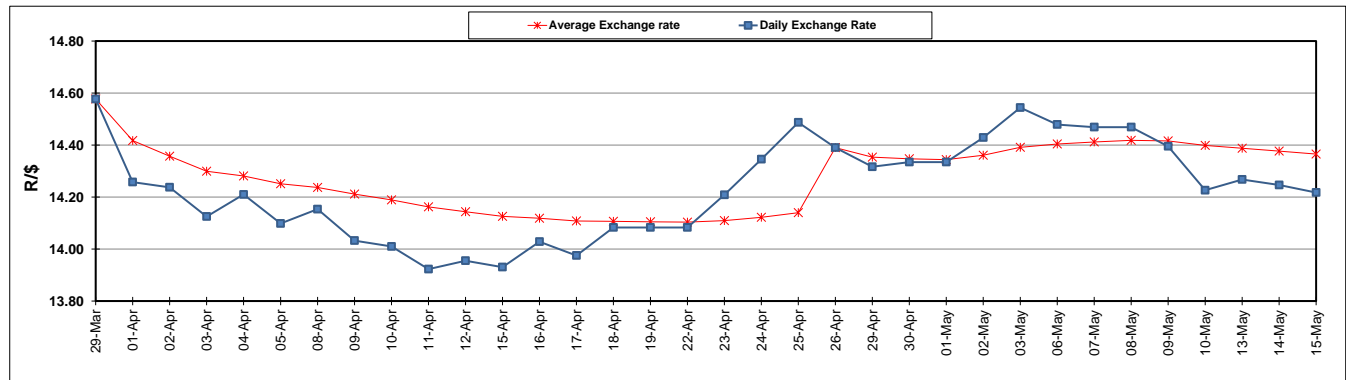
	PETROL 95 ULP	PETROL 93 ULP & LRP	DIESEL 0.05%	DIESEL 0.005%	ILL. PAR.
GAUTENG PUMP PRICE (SA c/l) AS FROM 01/05/2019	1 667.000	1 648.000	-	-	-
WHOLESALE PRICE (SA c/l) AS FROM 01/05/2019	-	-	1 488.120	1 494.520	965.678
SINGLE NATIONAL MAXIMUM RETAIL PRICE	-	-	-	-	1 231.000
BASIC FUEL PRICE - 15/05/2019 (SA c/l)	745.644	734.858	796.368	803.907	790.225
PRESS RELEASE CONTRIBUTION TO BFP 01/05/2019 - 15/05/2019 (SA c/l)	777.170	768.170	784.630	791.030	781.128
UNIT OVER/(UNDER) RECOVERY - 15/05/2019 (SA c/l)	31.526	33.312	(11.738)	(12.877)	(9.097)
AVERAGE BASIC FUEL PRICE 26/04/2019 - 15/05/2019	759.153	748.079	795.914	802.691	789.637
AVERAGE UNIT OVER/(UNDER) RECOVERY 26/04/2019 - 15/05/2019	6.445	8.520	(11.499)	(11.661)	(9.151)

ANALYSIS MOVEMENT OF AVERAGE OVER/(UNDER) RECOVERY

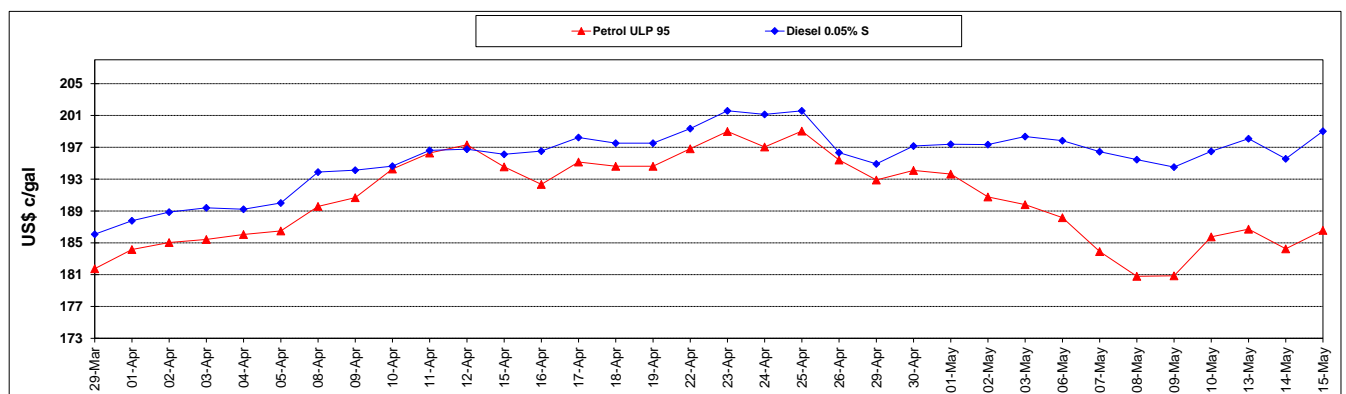
	PETROL 95	PETROL 93	DIESEL 0.05%	DIESEL 0.005%	ILL. PAR.
- MOVEMENT IN INTERNATIONAL PRODUCT PRICES	18.357	20.258	0.990	0.934	3.238
- MOVEMENT IN EXCHANGE RATE	(11.911)	(11.738)	(12.488)	(12.595)	(12.390)
AVERAGE UNIT OVER/(UNDER) RECOVERY 26/04/2019 - 15/05/2019	6.445	8.520	(11.499)	(11.661)	(9.151)

R/\$ EXCHANGE RATE - (R/\$14.2175 - 15/05/2019)

EXCHANGE RATE USED IN BASIC FUEL PRICE



INTERNATIONAL PRODUCT PRICES OF BASKET USED IN BASIC FUEL PRICE



BASIC FUEL PRICE IN SA CENTS PER LITRE

