

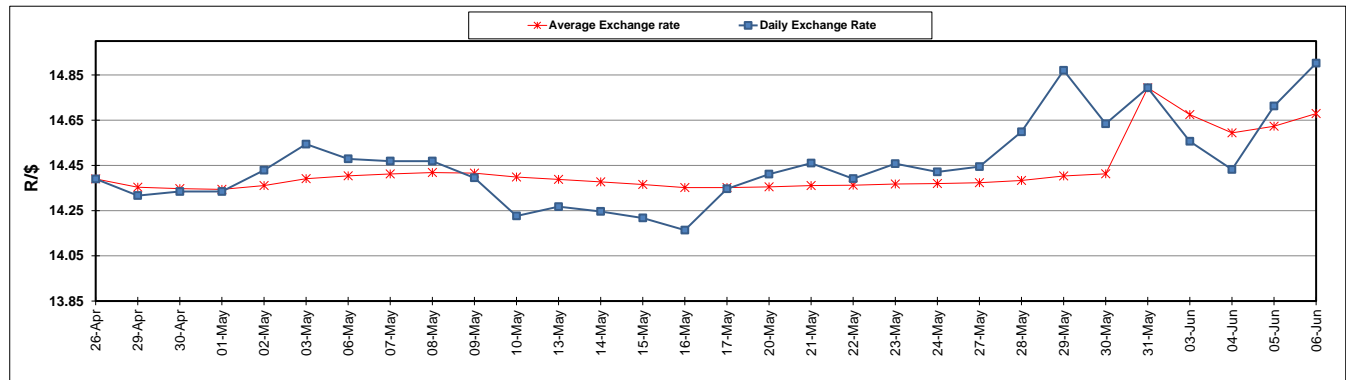
	PETROL 95 ULP	PETROL 93 ULP & LRP	DIESEL 0.05%	DIESEL 0.005%	ILL. PAR.
GAUTENG PUMP PRICE (SA c/l) AS FROM 05/06/2019	1 676.000	1 657.000	-	-	-
WHOLESALE PRICE (SA c/l) AS FROM 05/06/2019	-	-	1 521.280	1 527.680	973.678
SINGLE NATIONAL MAXIMUM RETAIL PRICE	-	-	-	-	1 241.000
BASIC FUEL PRICE - 06/06/2019 (SA c/l)	668.780	658.786	712.361	717.975	713.690
PRESS RELEASE CONTRIBUTION TO BFP 06/06/2019 - 06/06/2019 (SA c/l)	764.010	755.010	794.630	801.030	789.128
UNIT OVER/(UNDER) RECOVERY - 06/06/2019 (SA c/l)	95.230	96.224	82.269	83.055	75.438
AVERAGE BASIC FUEL PRICE 31/05/2019 - 06/06/2019	668.858	659.056	718.499	723.833	719.258
AVERAGE UNIT OVER/(UNDER) RECOVERY 31/05/2019 - 06/06/2019	103.048	103.850	70.131	71.197	65.070

ANALYSIS MOVEMENT OF AVERAGE OVER/(UNDER) RECOVERY

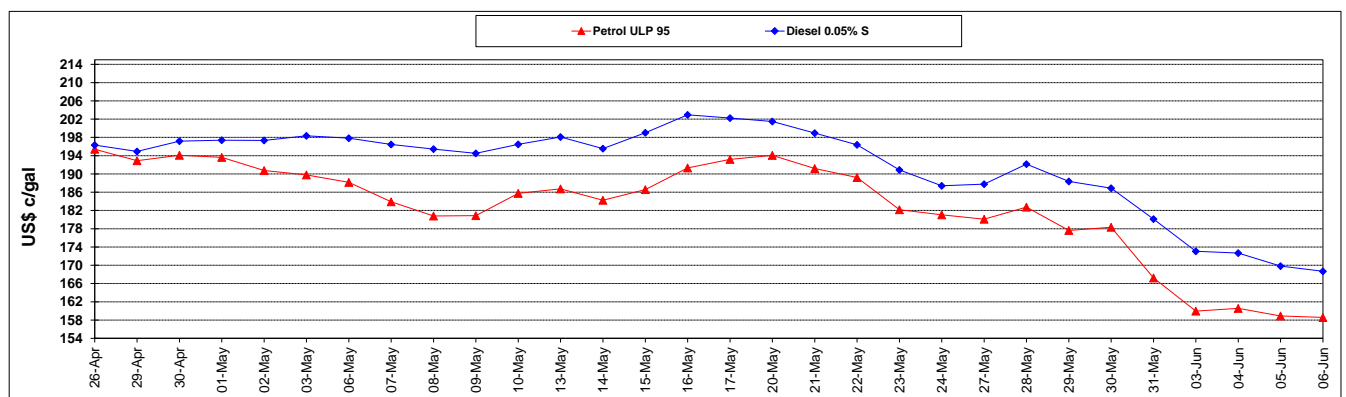
	PETROL 95	PETROL 93	DIESEL 0.05%	DIESEL 0.005%	ILL. PAR.
- MOVEMENT IN INTERNATIONAL PRODUCT PRICES	115.187	115.811	83.171	84.333	78.123
- MOVEMENT IN EXCHANGE RATE	(12.139)	(11.961)	(13.040)	(13.136)	(13.053)
AVERAGE UNIT OVER/(UNDER) RECOVERY 31/05/2019 - 06/06/2019	103.048	103.850	70.131	71.197	65.070

R/\$ EXCHANGE RATE - (R/\$14.9020 - 06/06/2019)

EXCHANGE RATE USED IN BASIC FUEL PRICE



INTERNATIONAL PRODUCT PRICES OF BASKET USED IN BASIC FUEL PRICE



BASIC FUEL PRICE IN SA CENTS PER LITRE

