

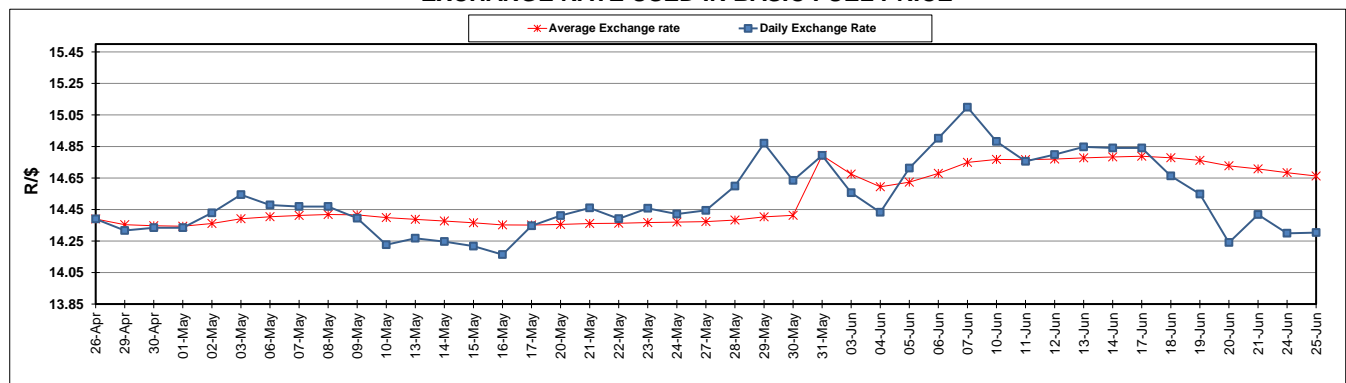
	PETROL 95 ULP	PETROL 93 ULP & LRP	DIESEL 0.05%	DIESEL 0.005%	ILL. PAR.
GAUTENG PUMP PRICE (SA c/l) AS FROM 05/06/2019	1 676.000	1 657.000	-	-	-
WHOLESALE PRICE (SA c/l) AS FROM 05/06/2019	-	-	1 521.280	1 527.680	973.678
SINGLE NATIONAL MAXIMUM RETAIL PRICE	-	-	-	-	1 241.000
BASIC FUEL PRICE - 25/06/2019 (SA c/l)	688.755	677.412	736.032	740.973	741.296
PRESS RELEASE CONTRIBUTION TO BFP 05/06/2019 - 25/06/2019 (SA c/l)	764.010	755.010	794.630	801.030	789.128
UNIT OVER/(UNDER) RECOVERY - 25/06/2019 (SA c/l)	75.255	77.598	58.598	60.057	47.832
AVERAGE BASIC FUEL PRICE 31/05/2019 - 25/06/2019	678.354	667.819	724.739	730.125	728.118
AVERAGE UNIT OVER/(UNDER) RECOVERY 31/05/2019 - 25/06/2019	87.849	89.384	68.225	69.239	59.676

ANALYSIS MOVEMENT OF AVERAGE OVER/(UNDER) RECOVERY

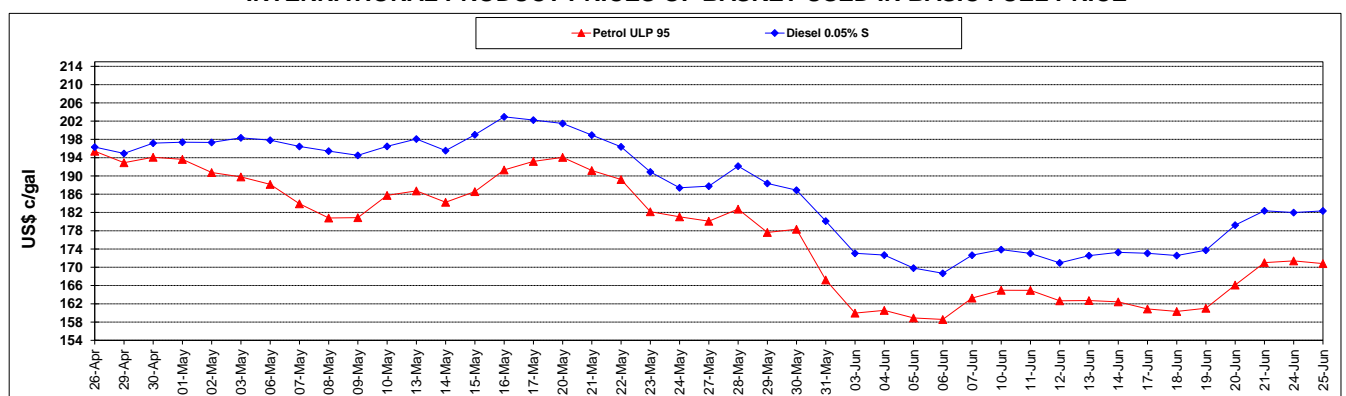
	PETROL 95	PETROL 93	DIESEL 0.05%	DIESEL 0.005%	ILL. PAR.
- MOVEMENT IN INTERNATIONAL PRODUCT PRICES	99.420	100.775	80.586	81.692	72.096
- MOVEMENT IN EXCHANGE RATE	(11.571)	(11.391)	(12.362)	(12.454)	(12.419)
AVERAGE UNIT OVER/(UNDER) RECOVERY 31/05/2019 - 25/06/2019	87.849	89.384	68.225	69.239	59.676

R/\$ EXCHANGE RATE - (R/\$14.3036 - 25/06/2019)

EXCHANGE RATE USED IN BASIC FUEL PRICE



INTERNATIONAL PRODUCT PRICES OF BASKET USED IN BASIC FUEL PRICE



BASIC FUEL PRICE IN SA CENTS PER LITRE

