

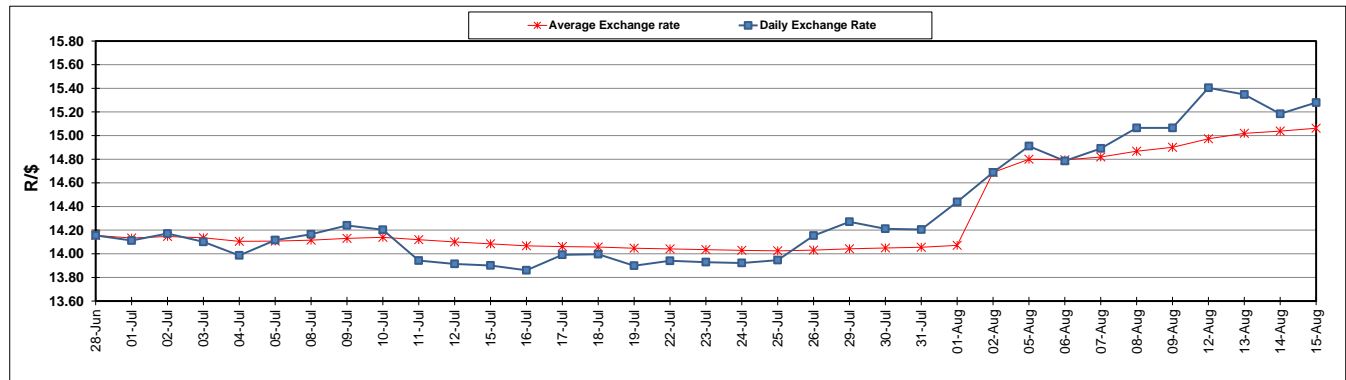
	PETROL 95 ULP	PETROL 93 ULP & LRP	DIESEL 0.05%	DIESEL 0.005%	ILL. PAR.
GAUTENG PUMP PRICE (SA c/l) AS FROM 08/08/2019	1 592.000	1 572.000	-	-	-
WHOLESALE PRICE (SA c/l) AS FROM 08/08/2019	-	-	1 433.210	1 437.610	914.678
SINGLE NATIONAL MAXIMUM RETAIL PRICE	-	-	-	-	1 163.000
BASIC FUEL PRICE - 15/08/2019 (SA c/l)	703.183	679.541	757.971	761.629	760.219
PRESS RELEASE CONTRIBUTION TO BFP 07/08/2019 - 15/08/2019 (SA c/l)	693.170	683.170	719.630	724.030	730.128
UNIT OVER/(UNDER) RECOVERY - 15/08/2019 (SA c/l)	(10.013)	3.629	(38.341)	(37.599)	(30.091)
AVERAGE BASIC FUEL PRICE 02/08/2019 - 15/08/2019	698.519	676.568	740.332	744.099	744.777
AVERAGE UNIT OVER/(UNDER) RECOVERY 02/08/2019 - 15/08/2019	(9.963)	1.989	(18.002)	(17.069)	(14.049)

ANALYSIS MOVEMENT OF AVERAGE OVER/(UNDER) RECOVERY

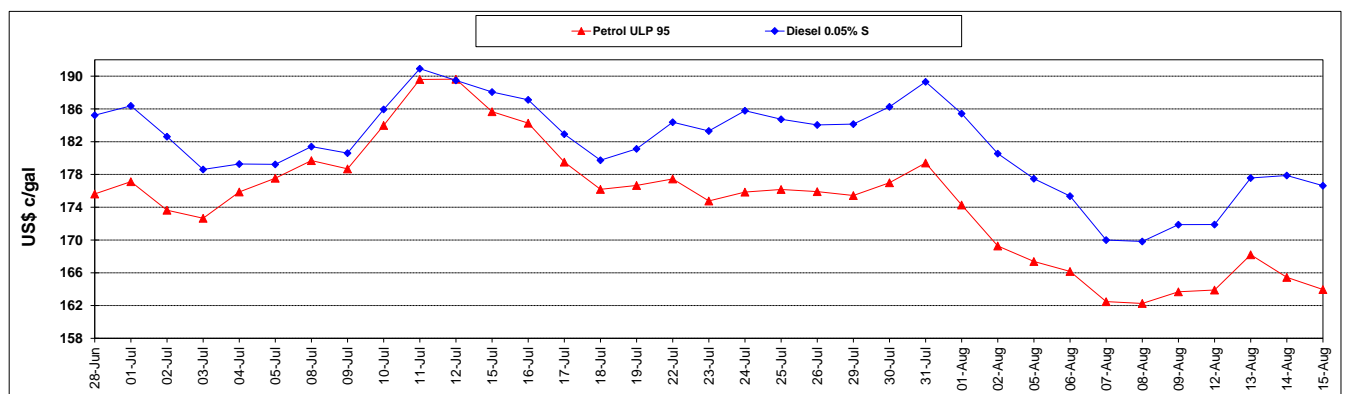
	PETROL 95	PETROL 93	DIESEL 0.05%	DIESEL 0.005%	ILL. PAR.
- MOVEMENT IN INTERNATIONAL PRODUCT PRICES	36.005	46.511	30.717	31.898	34.963
- MOVEMENT IN EXCHANGE RATE	(45.968)	(44.523)	(48.719)	(48.967)	(49.012)
AVERAGE UNIT OVER/(UNDER) RECOVERY 02/08/2019 - 15/08/2019	(9.963)	1.989	(18.002)	(17.069)	(14.049)

R/\$ EXCHANGE RATE - (R/\$15.2796 - 15/08/2019)

EXCHANGE RATE USED IN BASIC FUEL PRICE



INTERNATIONAL PRODUCT PRICES OF BASKET USED IN BASIC FUEL PRICE



BASIC FUEL PRICE IN SA CENTS PER LITRE

