

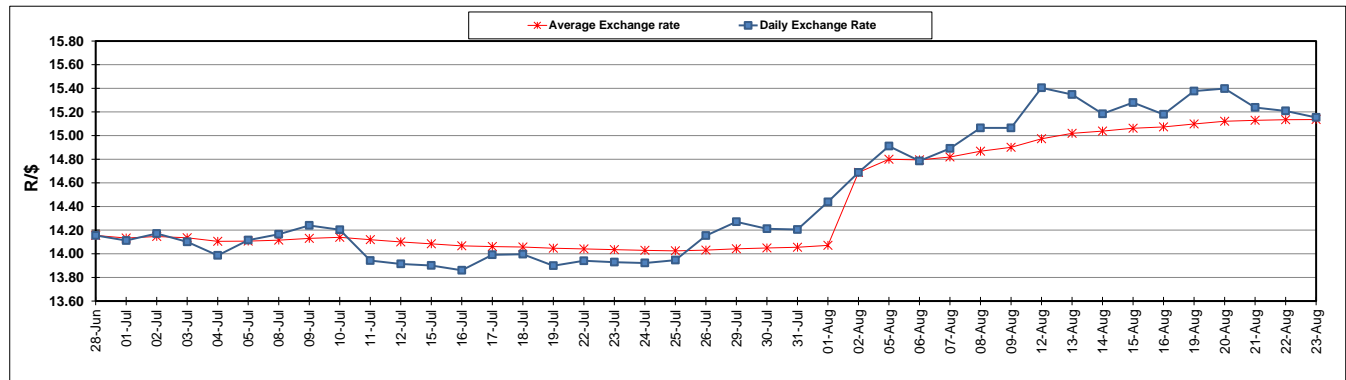
	PETROL 95 ULP	PETROL 93 ULP & LRP	DIESEL 0.05%	DIESEL 0.005%	ILL. PAR.
GAUTENG PUMP PRICE (SA c/l) AS FROM 08/08/2019	1 592.000	1 572.000	-	-	-
WHOLESALE PRICE (SA c/l) AS FROM 08/08/2019	-	-	1 433.210	1 437.610	914.678
SINGLE NATIONAL MAXIMUM RETAIL PRICE	-	-	-	-	1 163.000
BASIC FUEL PRICE - 23/08/2019 (SA c/l)	697.550	675.251	742.122	746.331	752.141
PRESS RELEASE CONTRIBUTION TO BFP 07/08/2019 - 23/08/2019 (SA c/l)	693.170	683.170	719.630	724.030	730.128
UNIT OVER/(UNDER) RECOVERY - 23/08/2019 (SA c/l)	(4.380)	7.919	(22.492)	(22.301)	(22.013)
AVERAGE BASIC FUEL PRICE 02/08/2019 - 23/08/2019	700.239	677.469	745.876	749.709	751.455
AVERAGE UNIT OVER/(UNDER) RECOVERY 02/08/2019 - 23/08/2019	(9.953)	2.817	(24.558)	(23.804)	(20.952)

ANALYSIS MOVEMENT OF AVERAGE OVER/(UNDER) RECOVERY

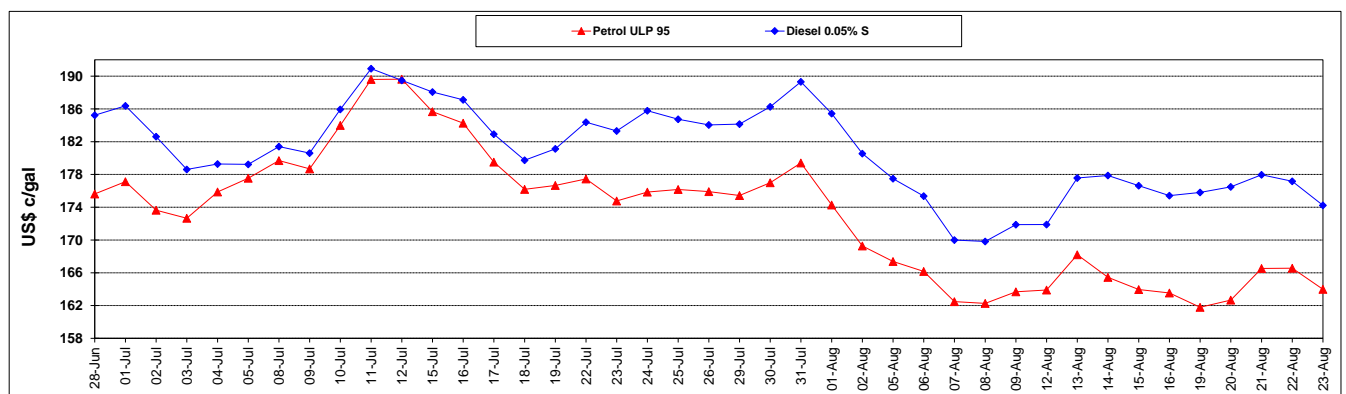
	PETROL 95	PETROL 93	DIESEL 0.05%	DIESEL 0.005%	ILL. PAR.
- MOVEMENT IN INTERNATIONAL PRODUCT PRICES	39.322	50.490	27.928	28.952	31.927
- MOVEMENT IN EXCHANGE RATE	(49.275)	(47.673)	(52.486)	(52.756)	(52.879)
AVERAGE UNIT OVER/(UNDER) RECOVERY 02/08/2019 - 23/08/2019	(9.953)	2.817	(24.558)	(23.804)	(20.952)

R/\$ EXCHANGE RATE - (R/\$15.1536 - 23/08/2019)

EXCHANGE RATE USED IN BASIC FUEL PRICE



INTERNATIONAL PRODUCT PRICES OF BASKET USED IN BASIC FUEL PRICE



BASIC FUEL PRICE IN SA CENTS PER LITRE

