

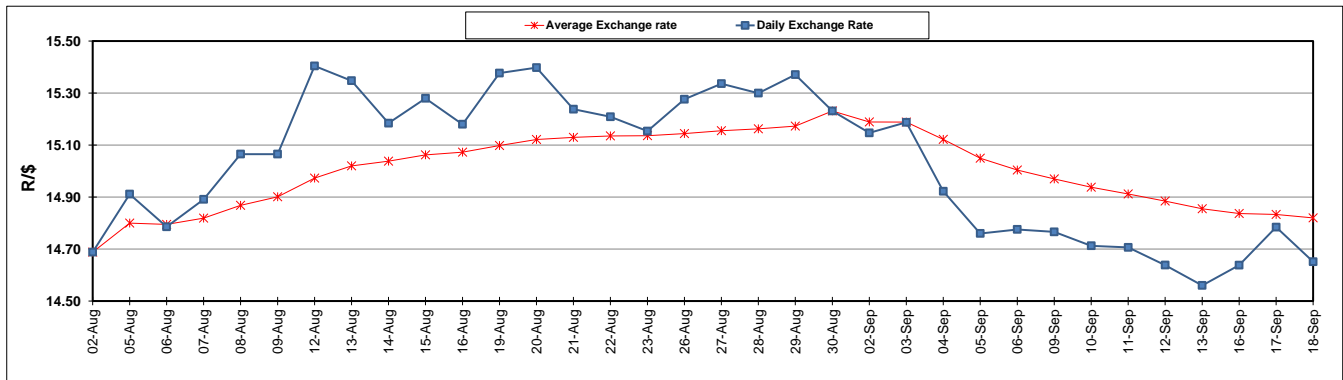
	PETROL 95 ULP	PETROL 93 ULP & LRP	DIESEL 0.05%	DIESEL 0.005%	ILL. PAR.
GAUTENG PUMP PRICE (SA c/l) AS FROM 04/09/2019	1,603.000	1,583.000	-	-	-
WHOLESALE PRICE (SA c/l) AS FROM 04/09/2019	-	-	1,459.210	1,463.610	936.678
SINGLE NATIONAL MAXIMUM RETAIL PRICE	-	-	-	-	1,195.000
BASIC FUEL PRICE - 18/09/2019 (SA c/l)	750.181	711.411	776.585	782.178	794.335
PRESS RELEASE CONTRIBUTION TO BFP 04/09/2019 - 18/09/2019 (SA c/l)	704.170	694.170	745.630	750.030	754.128
UNIT OVER/(UNDER) RECOVERY - 18/09/2019 (SA c/l)	(46.011)	(17.241)	(30.955)	(32.148)	(40.207)
AVERAGE BASIC FUEL PRICE 30/08/2019 - 18/09/2019	706.677	679.714	758.027	761.633	763.698
AVERAGE UNIT OVER/(UNDER) RECOVERY 30/08/2019 - 18/09/2019	(4.864)	12.099	(17.969)	(17.175)	(14.713)

### ANALYSIS MOVEMENT OF AVERAGE OVER/(UNDER) RECOVERY

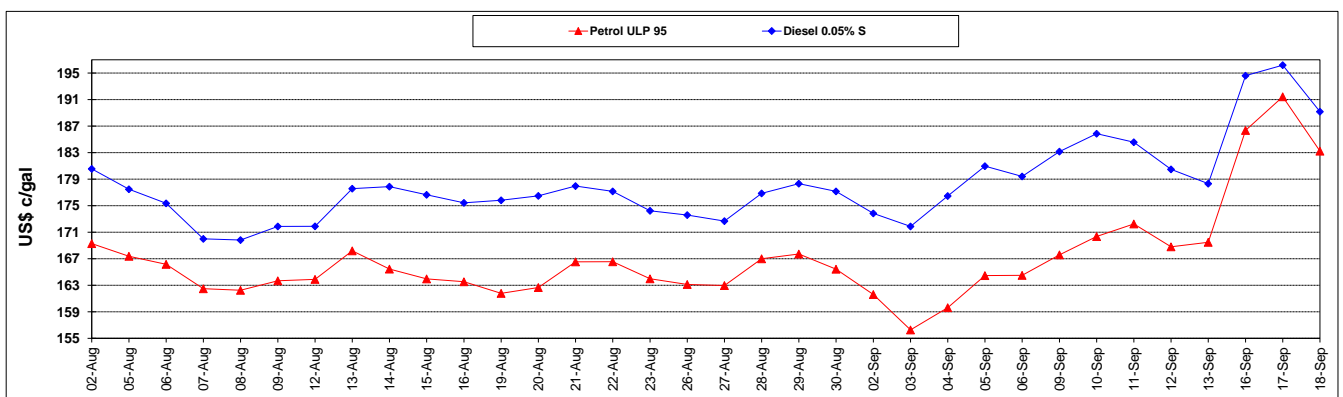
	PETROL 95	PETROL 93	DIESEL 0.05%	DIESEL 0.005%	ILL. PAR.
- MOVEMENT IN INTERNATIONAL PRODUCT PRICES	(21.697)	(4.091)	(36.024)	(35.316)	(32.904)
- MOVEMENT IN EXCHANGE RATE	16.833	16.190	18.056	18.142	18.191
AVERAGE UNIT OVER/(UNDER) RECOVERY 30/08/2019 - 18/09/2019	(4.864)	12.099	(17.969)	(17.175)	(14.713)

### R/\$ EXCHANGE RATE - (R/\$14.6513 - 18/09/2019)

#### EXCHANGE RATE USED IN BASIC FUEL PRICE



#### INTERNATIONAL PRODUCT PRICES OF BASKET USED IN BASIC FUEL PRICE



#### BASIC FUEL PRICE IN SA CENTS PER LITRE

