

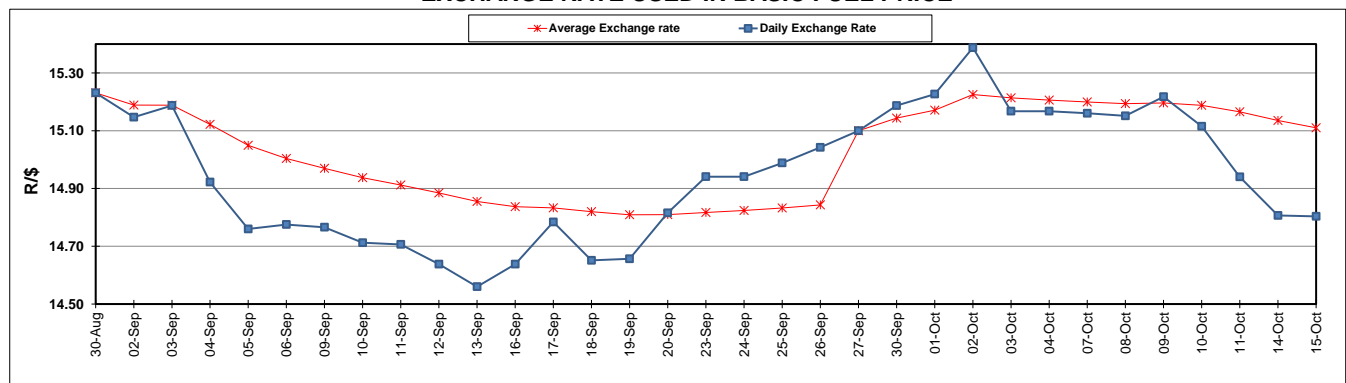
	PETROL 95 ULP	PETROL 93 ULP & LRP	DIESEL 0.05%	DIESEL 0.005%	ILL. PAR.
GAUTENG PUMP PRICE (SA c/l) AS FROM 02/10/2019	1,621.000	1,579.000	-	-	-
WHOLESALE PRICE (SA c/l) AS FROM 02/10/2019	-	-	1,484.210	1,488.610	961.678
SINGLE NATIONAL MAXIMUM RETAIL PRICE	-	-	-	-	1,228.000
BASIC FUEL PRICE - 15/10/2019 (SA c/l)	699.960	656.719	730.929	737.374	727.630
PRESS RELEASE CONTRIBUTION TO BFP 02/10/2019 - 15/10/2019 (SA c/l)	722.170	690.170	770.630	775.030	779.128
UNIT OVER/(UNDER) RECOVERY - 15/10/2019 (SA c/l)	22.210	33.451	39.701	37.656	51.498
AVERAGE BASIC FUEL PRICE 27/09/2019 - 15/10/2019	725.518	684.166	762.099	768.338	766.667
AVERAGE UNIT OVER/(UNDER) RECOVERY 27/09/2019 - 15/10/2019	(7.502)	6.927	2.761	0.923	6.692

ANALYSIS MOVEMENT OF AVERAGE OVER/(UNDER) RECOVERY

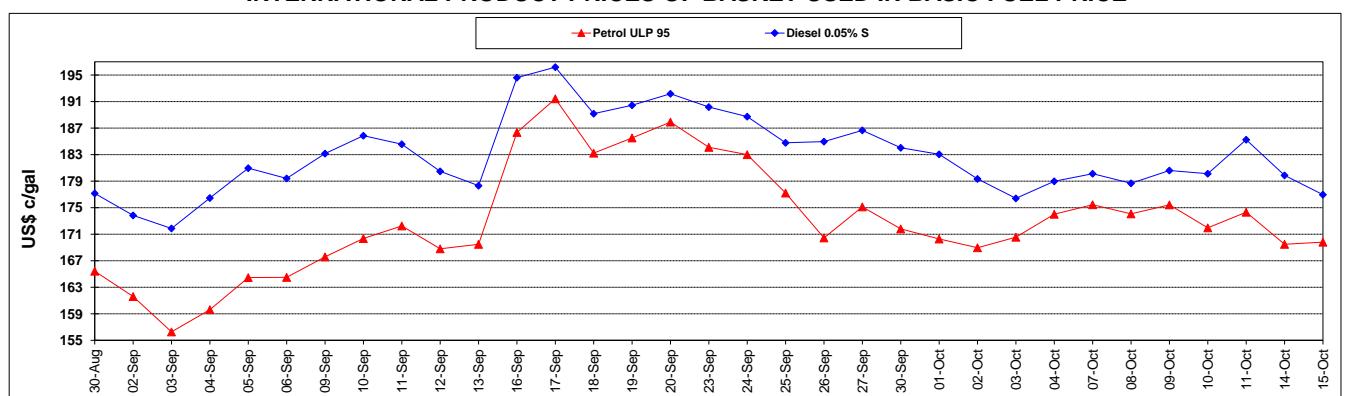
	PETROL 95	PETROL 93	DIESEL 0.05%	DIESEL 0.005%	ILL. PAR.
- MOVEMENT IN INTERNATIONAL PRODUCT PRICES	5.313	19.012	16.223	14.495	20.234
- MOVEMENT IN EXCHANGE RATE	(12.815)	(12.085)	(13.461)	(13.572)	(13.542)
AVERAGE UNIT OVER/(UNDER) RECOVERY 27/09/2019 - 15/10/2019	(7.502)	6.927	2.761	0.923	6.692

R/\$ EXCHANGE RATE - (R/\$14.8035 - 15/10/2019)

EXCHANGE RATE USED IN BASIC FUEL PRICE



INTERNATIONAL PRODUCT PRICES OF BASKET USED IN BASIC FUEL PRICE



BASIC FUEL PRICE IN SA CENTS PER LITRE

