

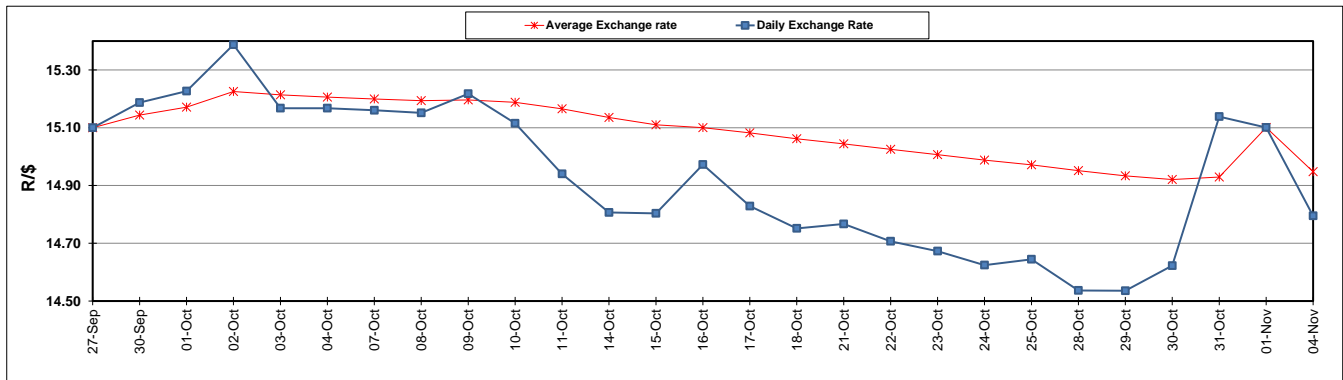
	PETROL 95 ULP	PETROL 93 ULP & LRP	DIESEL 0.05%	DIESEL 0.005%	ILL. PAR.
GAUTENG PUMP PRICE (SA c/l) AS FROM 06/11/2019	1,608.000	1,566.000	-	-	-
WHOLESALE PRICE (SA c/l) AS FROM 06/11/2019	-	-	1,468.210	1,474.610	938.678
SINGLE NATIONAL MAXIMUM RETAIL PRICE	-	-	-	-	1,197.000
BASIC FUEL PRICE - 04/11/2019 (SA c/l)	718.360	682.511	750.852	757.994	749.124
PRESS RELEASE CONTRIBUTION TO BFP 01/11/2019 - 04/11/2019 (SA c/l)	722.170	690.170	770.630	775.030	779.128
UNIT OVER/(UNDER) RECOVERY - 04/11/2019 (SA c/l)	3.810	7.659	19.778	17.036	30.004
AVERAGE BASIC FUEL PRICE 01/11/2019 - 04/11/2019	712.483	680.870	748.606	756.295	747.203
AVERAGE UNIT OVER/(UNDER) RECOVERY 01/11/2019 - 04/11/2019	9.687	9.300	22.025	18.736	31.925

ANALYSIS MOVEMENT OF AVERAGE OVER/(UNDER) RECOVERY

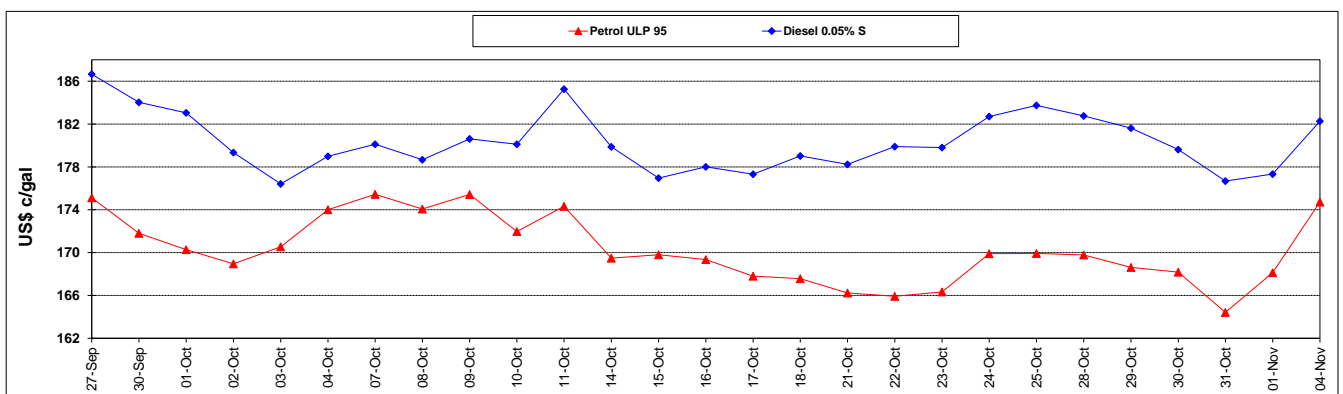
	PETROL 95	PETROL 93	DIESEL 0.05%	DIESEL 0.005%	ILL. PAR.
- MOVEMENT IN INTERNATIONAL PRODUCT PRICES	10.569	10.143	22.951	19.671	32.850
- MOVEMENT IN EXCHANGE RATE	(0.882)	(0.843)	(0.927)	(0.936)	(0.925)
AVERAGE UNIT OVER/(UNDER) RECOVERY 01/11/2019 - 04/11/2019	9.687	9.300	22.025	18.736	31.925

R/\$ EXCHANGE RATE - (R/\$14.7949 - 04/11/2019)

EXCHANGE RATE USED IN BASIC FUEL PRICE



INTERNATIONAL PRODUCT PRICES OF BASKET USED IN BASIC FUEL PRICE



BASIC FUEL PRICE IN SA CENTS PER LITRE

