

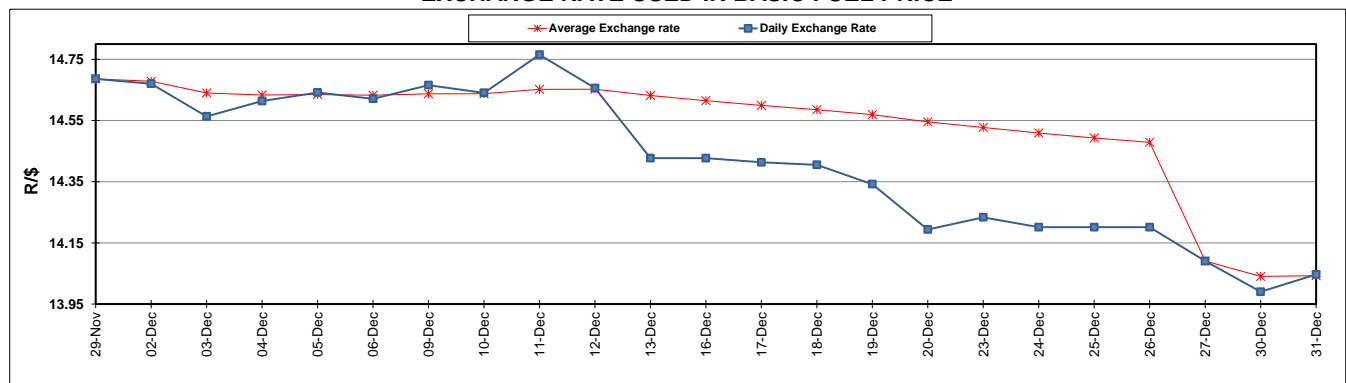
	PETROL 95 ULP	PETROL 93 ULP & LRP	DIESEL 0.05%	DIESEL 0.005%	ILL. PAR.
GAUTENG PUMP PRICE (SA c/l) AS FROM 01/01/2020	1,616.000	1,584.000	-	-	-
WHOLESALE PRICE (SA c/l) AS FROM 01/01/2020	-	-	1,462.260	1,467.660	927.728
SINGLE NATIONAL MAXIMUM RETAIL PRICE	-	-	-	-	1,180.000
BASIC FUEL PRICE - 31/12/2019 (SA c/l)	685.798	670.874	750.626	756.471	741.993
PRESS RELEASE CONTRIBUTION TO BFP 27/12/2019 - 31/12/2019 (SA c/l)	719.570	687.570	733.630	739.030	732.128
UNIT OVER/(UNDER) RECOVERY - 31/12/2019 (SA c/l)	33.772	16.696	(16.996)	(17.441)	(9.865)
AVERAGE BASIC FUEL PRICE 27/12/2019 - 31/12/2019	695.051	677.844	755.640	761.323	745.316
AVERAGE UNIT OVER/(UNDER) RECOVERY 27/12/2019 - 31/12/2019	24.519	9.726	(22.010)	(22.293)	(13.188)

ANALYSIS MOVEMENT OF AVERAGE OVER/(UNDER) RECOVERY

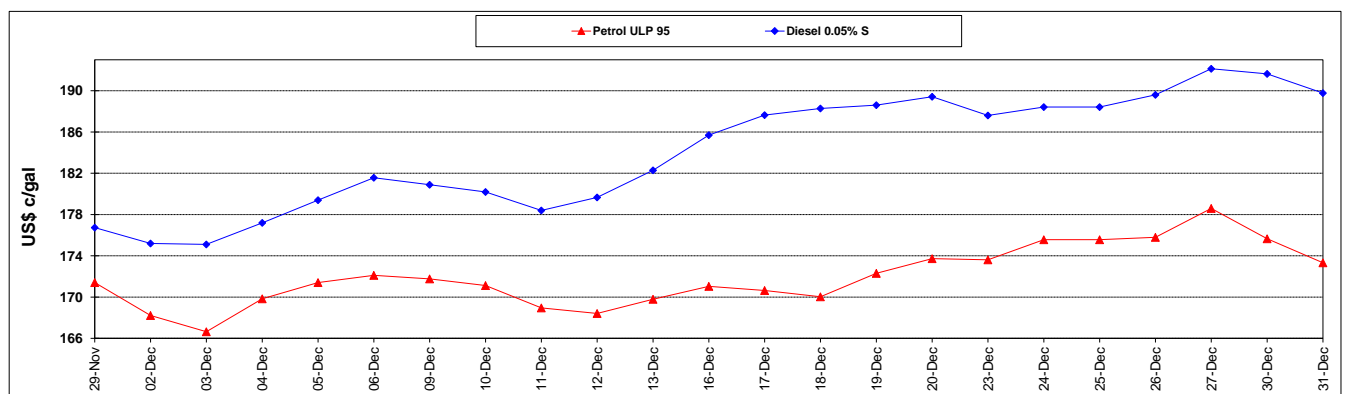
	PETROL 95	PETROL 93	DIESEL 0.05%	DIESEL 0.005%	ILL. PAR.
- MOVEMENT IN INTERNATIONAL PRODUCT PRICES	2.944	(11.315)	(45.466)	(45.926)	(36.324)
- MOVEMENT IN EXCHANGE RATE	21.575	21.041	23.456	23.633	23.136
AVERAGE UNIT OVER/(UNDER) RECOVERY 27/12/2019 - 31/12/2019	24.519	9.726	(22.010)	(22.293)	(13.188)

R/\$ EXCHANGE RATE - (R/\$14.0468 - 31/12/2019)

EXCHANGE RATE USED IN BASIC FUEL PRICE



INTERNATIONAL PRODUCT PRICES OF BASKET USED IN BASIC FUEL PRICE



BASIC FUEL PRICE IN SA CENTS PER LITRE

