

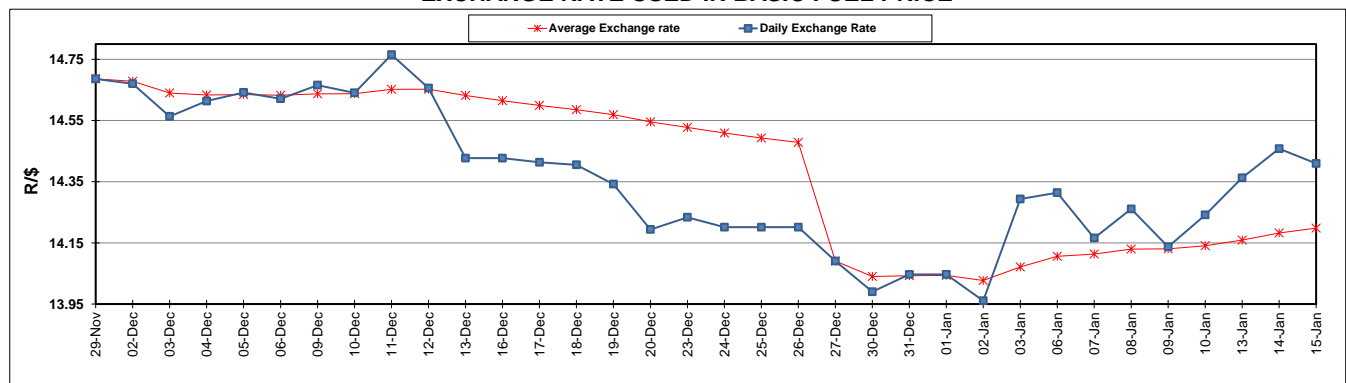
	PETROL 95 ULP	PETROL 93 ULP & LRP	DIESEL 0.05%	DIESEL 0.005%	ILL. PAR.
GAUTENG PUMP PRICE (SA c/l) AS FROM 01/01/2020	1,616.000	1,584.000	-	-	-
WHOLESALE PRICE (SA c/l) AS FROM 01/01/2020	-	-	1,462.260	1,467.660	927.728
SINGLE NATIONAL MAXIMUM RETAIL PRICE	-	-	-	-	1,180.000
BASIC FUEL PRICE - 15/01/2020 (SA c/l)	688.190	676.285	725.215	730.176	724.145
PRESS RELEASE CONTRIBUTION TO BFP 01/01/2020 - 15/01/2020 (SA c/l)	699.970	677.970	742.630	748.030	737.128
UNIT OVER/(UNDER) RECOVERY - 15/01/2020 (SA c/l)	11.780	1.685	17.415	17.854	12.983
AVERAGE BASIC FUEL PRICE 27/12/2019 - 15/01/2020	695.525	680.718	750.895	756.317	743.973
AVERAGE UNIT OVER/(UNDER) RECOVERY 27/12/2019 - 15/01/2020	8.645	(0.691)	(10.194)	(10.216)	(7.917)

ANALYSIS MOVEMENT OF AVERAGE OVER/(UNDER) RECOVERY

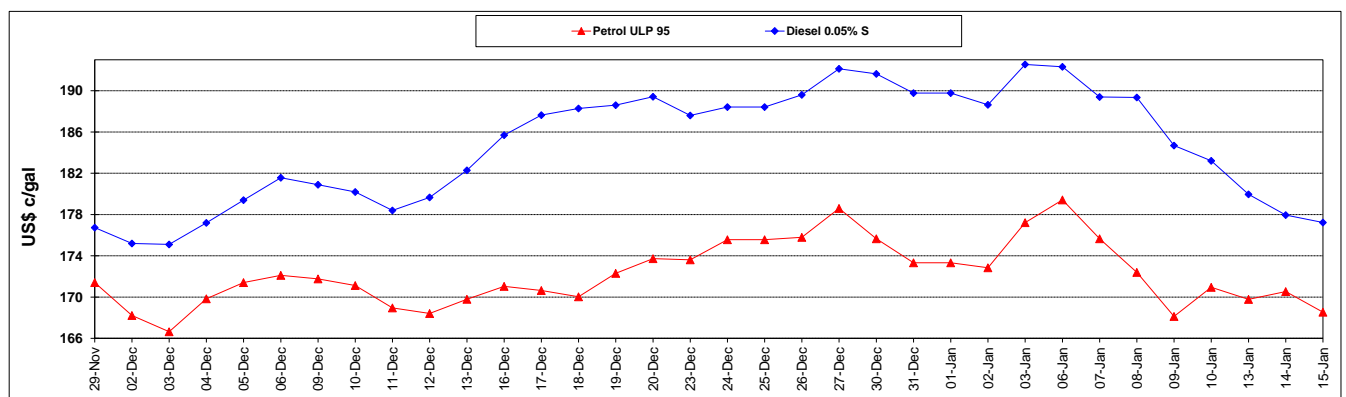
	PETROL 95	PETROL 93	DIESEL 0.05%	DIESEL 0.005%	ILL. PAR.
- MOVEMENT IN INTERNATIONAL PRODUCT PRICES	(5.071)	(14.115)	(25.002)	(25.131)	(22.588)
- MOVEMENT IN EXCHANGE RATE	13.716	13.424	14.808	14.915	14.672
AVERAGE UNIT OVER/(UNDER) RECOVERY 27/12/2019 - 15/01/2020	8.645	(0.691)	(10.194)	(10.216)	(7.917)

R/\$ EXCHANGE RATE - (R/\$14.4095 - 15/01/2020)

EXCHANGE RATE USED IN BASIC FUEL PRICE



INTERNATIONAL PRODUCT PRICES OF BASKET USED IN BASIC FUEL PRICE



BASIC FUEL PRICE IN SA CENTS PER LITRE

