

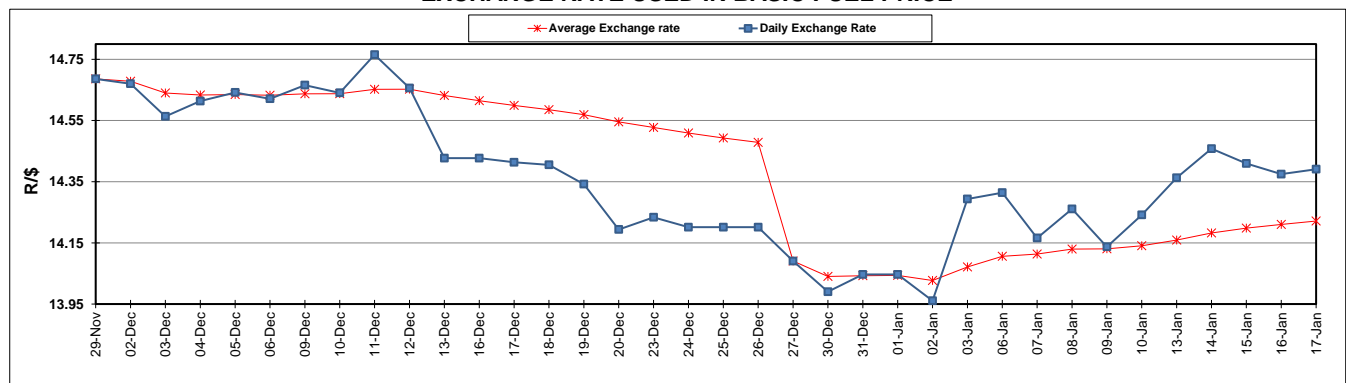
	PETROL 95 ULP	PETROL 93 ULP & LRP	DIESEL 0.05%	DIESEL 0.005%	ILL. PAR.
GAUTENG PUMP PRICE (SA c/l) AS FROM 01/01/2020	1,616.000	1,584.000	-	-	-
WHOLESALE PRICE (SA c/l) AS FROM 01/01/2020	-	-	1,462.260	1,467.660	927.728
SINGLE NATIONAL MAXIMUM RETAIL PRICE	-	-	-	-	1,180.000
BASIC FUEL PRICE - 17/01/2020 (SA c/l)	688.559	677.223	720.412	725.164	723.429
PRESS RELEASE CONTRIBUTION TO BFP 01/01/2020 - 17/01/2020 (SA c/l)	699.970	677.970	742.630	748.030	737.128
UNIT OVER/(UNDER) RECOVERY - 17/01/2020 (SA c/l)	11.411	0.747	22.218	22.866	13.699
AVERAGE BASIC FUEL PRICE 27/12/2019 - 17/01/2020	694.574	680.132	747.211	752.556	741.413
AVERAGE UNIT OVER/(UNDER) RECOVERY 27/12/2019 - 17/01/2020	9.071	(0.362)	(6.269)	(6.213)	(5.223)

### ANALYSIS MOVEMENT OF AVERAGE OVER/(UNDER) RECOVERY

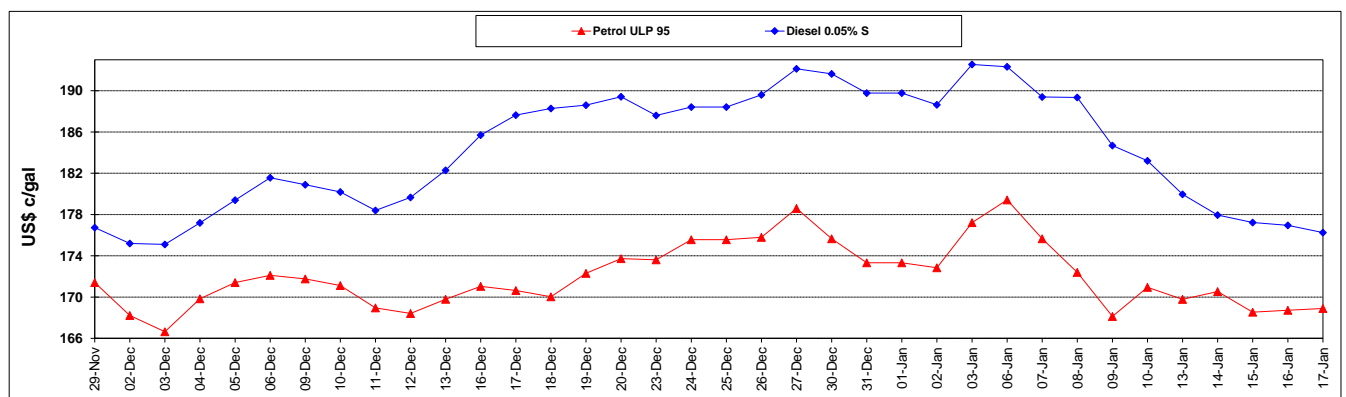
	PETROL 95	PETROL 93	DIESEL 0.05%	DIESEL 0.005%	ILL. PAR.
- MOVEMENT IN INTERNATIONAL PRODUCT PRICES	(3.476)	(12.648)	(19.766)	(19.807)	(18.615)
- MOVEMENT IN EXCHANGE RATE	12.547	12.286	13.498	13.594	13.393
AVERAGE UNIT OVER/(UNDER) RECOVERY 27/12/2019 - 17/01/2020	9.071	(0.362)	(6.269)	(6.213)	(5.223)

**R/\$ EXCHANGE RATE - (R/\$14.3908 - 17/01/2020)**

### EXCHANGE RATE USED IN BASIC FUEL PRICE



### INTERNATIONAL PRODUCT PRICES OF BASKET USED IN BASIC FUEL PRICE



### BASIC FUEL PRICE IN SA CENTS PER LITRE

