

South African Cents per Litre (SA c/l)	PETROL 95 ULP	PETROL 93 ULP & LRP	DIESEL 0.05%	DIESEL 0.005%	ILL. PAR.
GAUTENG PUMP PRICE AS FROM 07/12/2022	2,346.000	2,316.000	-	-	-
WHOLESALE PRICE AS FROM 07/12/2022	-	-	2,391.770	2,422.170	1,718.958
SINGLE NATIONAL MAXIMUM RETAIL PRICE	-	-	-	-	2,267.000
BASIC FUEL PRICE - 07/12/2022	1,017.011	981.353	1,217.289	1,236.624	1,235.262
PRESS RELEASE CONTRIBUTION TO BFP 07/12/2022 - 07/12/2022	1,234.490	1,204.490	1,508.630	1,539.030	1,500.128
UNIT OVER/(UNDER) RECOVERY - 07/12/2022	217.479	223.137	291.341	302.406	264.866
AVERAGE BASIC FUEL PRICE 02/12/2022 - 07/12/2022	1,062.182	1,030.125	1,290.459	1,311.021	1,315.785
AVERAGE UNIT OVER/(UNDER) RECOVERY 02/12/2022 - 07/12/2022	153.859	155.915	346.422	352.509	227.844

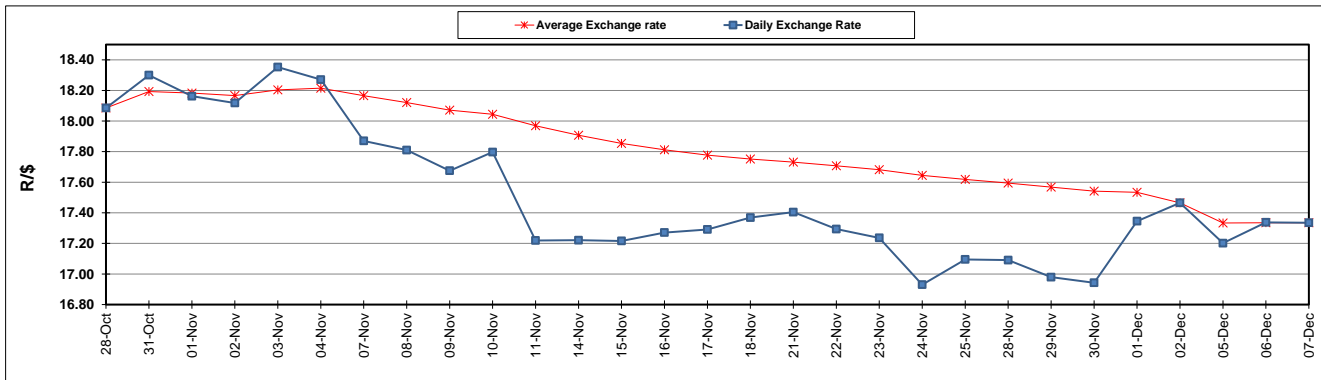
ANALYSIS MOVEMENT OF AVERAGE OVER/(UNDER) RECOVERY

- MOVEMENT IN INTERNATIONAL PRODUCT PRICES
- MOVEMENT IN EXCHANGE RATE
- AVERAGE UNIT OVER/(UNDER) RECOVERY 02/12/2022 - 07/12/2022

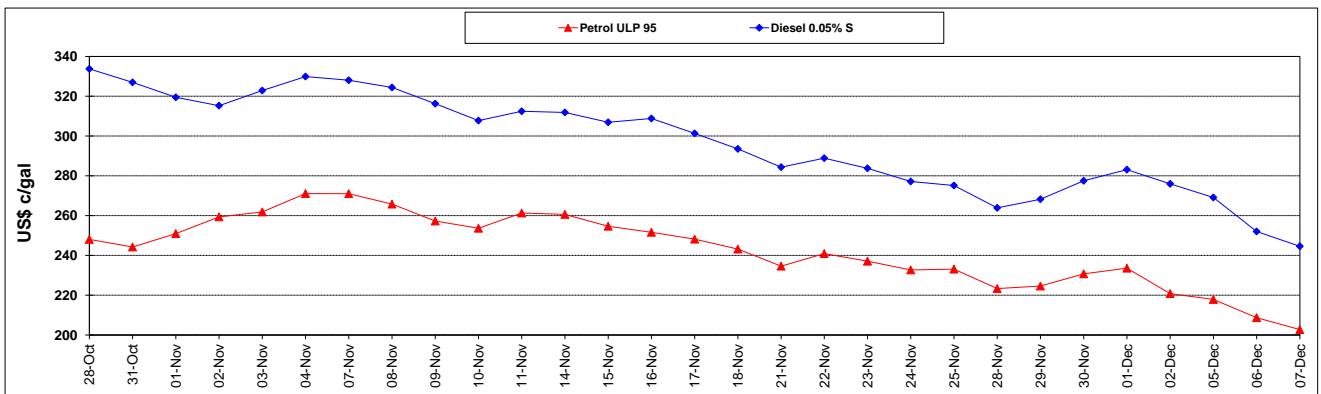
	PETROL 95	PETROL 93	DIESEL 0.05%	DIESEL 0.005%	ILL. PAR.
MOVEMENT IN INTERNATIONAL PRODUCT PRICES	141.664	144.089	331.607	337.459	212.738
MOVEMENT IN EXCHANGE RATE	12.194	11.826	14.814	15.050	15.105
AVERAGE UNIT OVER/(UNDER) RECOVERY 02/12/2022 - 07/12/2022	153.859	155.915	346.422	352.509	227.844

R/\$ EXCHANGE RATE - (R/\$17.3350 - 07/12/2022)

EXCHANGE RATE USED IN BASIC FUEL PRICE



INTERNATIONAL PRODUCT PRICES OF BASKET USED IN BASIC FUEL PRICE



BASIC FUEL PRICE IN SA CENTS PER LITRE

