

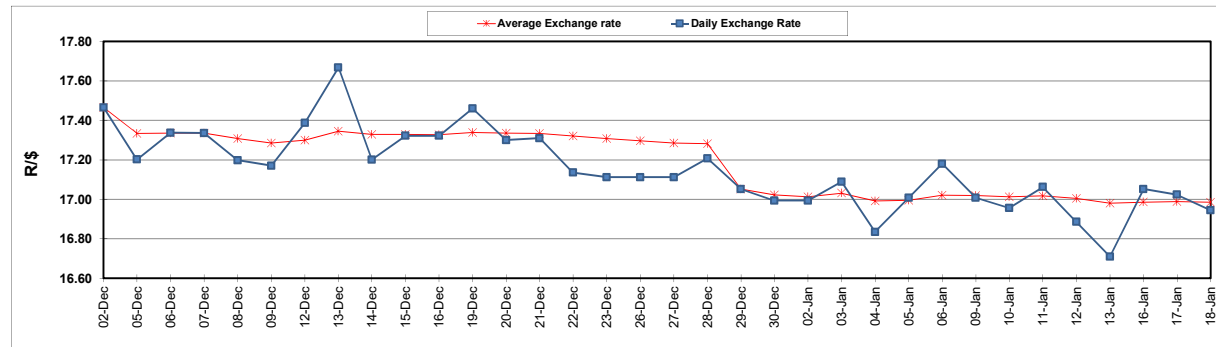
South African Cents per Litre (SA c/l)	PETROL 95 ULP	PETROL 93 ULP & LRP	DIESEL 0.05%	DIESEL 0.005%	ILL. PAR.
GAUTENG PUMP PRICE AS FROM 04/01/2023	2,140.000	2,110.000	-	-	-
WHOLESALE PRICE AS FROM 04/01/2023	-	-	2,122.870	2,141.270	1,525.958
SINGLE NATIONAL MAXIMUM RETAIL PRICE	-	-	-	-	2,009.000
BASIC FUEL PRICE - 18/01/2023	1,196.583	1,169.652	1,389.933	1,399.315	1,429.556
PRESS RELEASE CONTRIBUTION TO BFP 04/01/2023 - 18/01/2023	1,050.390	1,020.390	1,261.630	1,280.030	1,307.128
UNIT OVER/(UNDER) RECOVERY - 18/01/2023	(146.193)	(149.262)	(128.303)	(119.285)	(122.428)
AVERAGE BASIC FUEL PRICE 29/12/2022 - 18/01/2023	1,104.479	1,081.553	1,311.989	1,321.364	1,344.866
AVERAGE UNIT OVER/(UNDER) RECOVERY 29/12/2022 - 18/01/2023	(4.996)	(12.070)	15.508	27.733	13.729

### ANALYSIS MOVEMENT OF AVERAGE OVER/(UNDER) RECOVERY

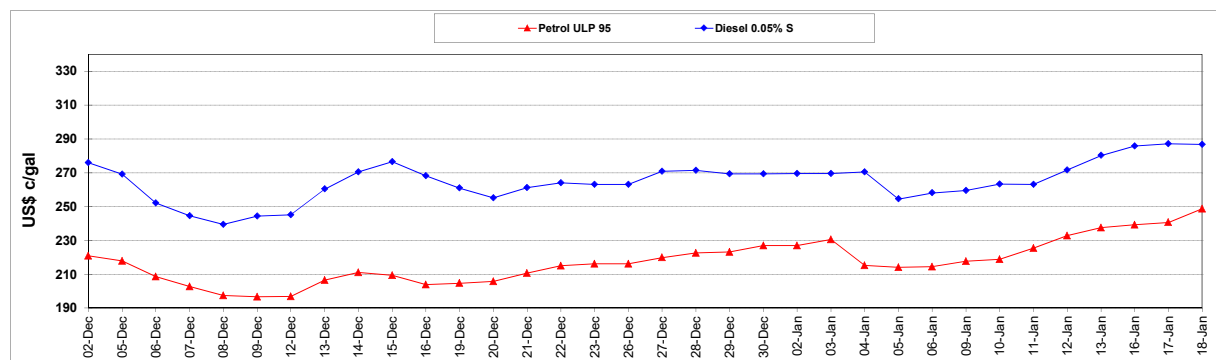
	PETROL 95	PETROL 93	DIESEL 0.05%	DIESEL 0.005%	ILL. PAR.
- MOVEMENT IN INTERNATIONAL PRODUCT PRICES	(19.366)	(26.142)	(1.562)	10.541	(3.769)
- MOVEMENT IN EXCHANGE RATE	14.370	14.072	17.070	17.192	17.498
AVERAGE UNIT OVER/(UNDER) RECOVERY 29/12/2022 - 18/01/2023	(4.996)	(12.070)	15.508	27.733	13.729

### R/\$ EXCHANGE RATE - (R/\$16.9450 - 18/01/2023)

#### EXCHANGE RATE USED IN BASIC FUEL PRICE



#### INTERNATIONAL PRODUCT PRICES OF BASKET USED IN BASIC FUEL PRICE



#### BASIC FUEL PRICE IN SA CENTS PER LITRE

