

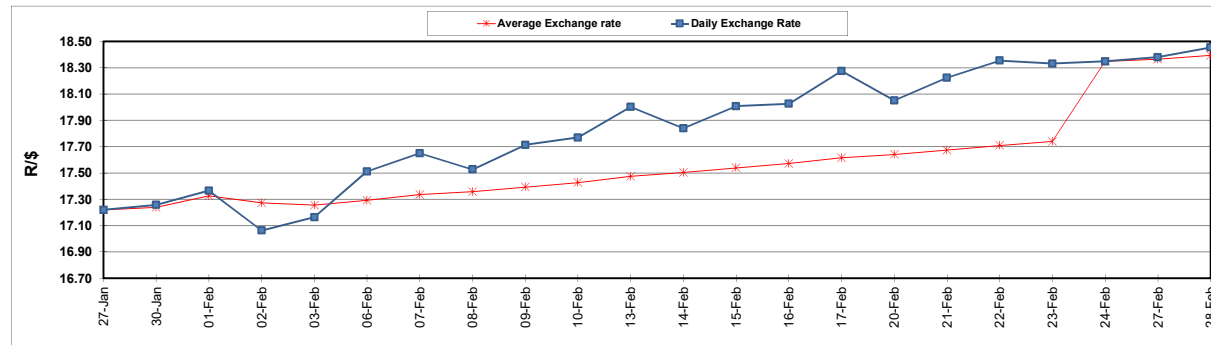
South African Cents per Litre (SA c/l)	PETROL 95 ULP	PETROL 93 ULP & LRP	DIESEL 0.05%	DIESEL 0.005%	ILL. PAR.
GAUTENG PUMP PRICE AS FROM 01/03/2023	2,295.000	2,265.000	-	-	-
WHOLESALE PRICE AS FROM 01/03/2023	-	-	2,162.410	2,171.810	1,596.958
SINGLE NATIONAL MAXIMUM RETAIL PRICE	-	-	-	-	2,104.000
BASIC FUEL PRICE - 28/02/2023	1,266.283	1,236.859	1,363.149	1,369.061	1,370.828
PRESS RELEASE CONTRIBUTION TO BFP 24/02/2023 - 28/02/2023	1,122.230	1,092.230	1,314.630	1,323.030	1,365.128
UNIT OVER/(UNDER) RECOVERY - 28/02/2023	(144.053)	(144.629)	(48.519)	(46.031)	(5.700)
AVERAGE BASIC FUEL PRICE 24/02/2023 - 28/02/2023	1,255.606	1,226.289	1,349.857	1,355.835	1,355.833
AVERAGE UNIT OVER/(UNDER) RECOVERY 24/02/2023 - 28/02/2023	(133.376)	(134.059)	(35.227)	(32.805)	9.295

ANALYSIS MOVEMENT OF AVERAGE OVER/(UNDER) RECOVERY

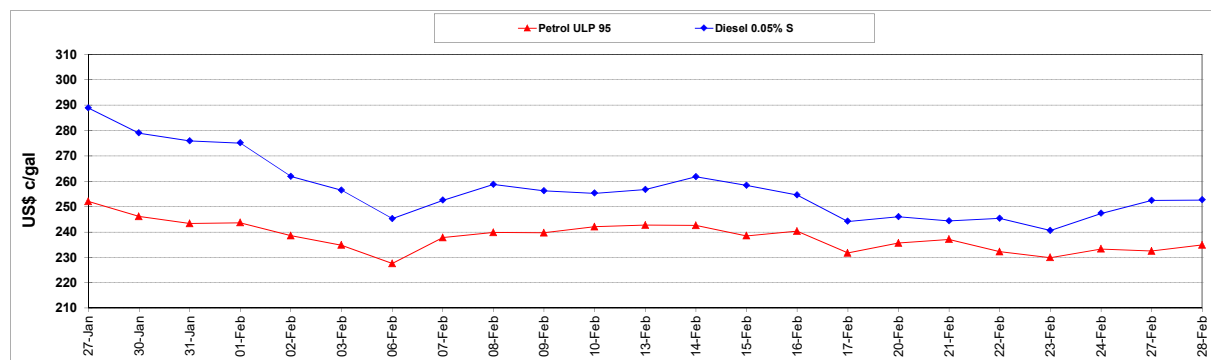
	PETROL 95	PETROL 93	DIESEL 0.05%	DIESEL 0.005%	ILL. PAR.
- MOVEMENT IN INTERNATIONAL PRODUCT PRICES	(88.793)	(90.517)	12.703	15.337	57.437
- MOVEMENT IN EXCHANGE RATE	(44.583)	(43.542)	(47.930)	(48.142)	(48.142)
AVERAGE UNIT OVER/(UNDER) RECOVERY 24/02/2023 - 28/02/2023	(133.376)	(134.059)	(35.227)	(32.805)	9.295

R/\$ EXCHANGE RATE - (R/\$18.4535 - 28/02/2023)

EXCHANGE RATE USED IN BASIC FUEL PRICE



INTERNATIONAL PRODUCT PRICES OF BASKET USED IN BASIC FUEL PRICE



BASIC FUEL PRICE IN SA CENTS PER LITRE

